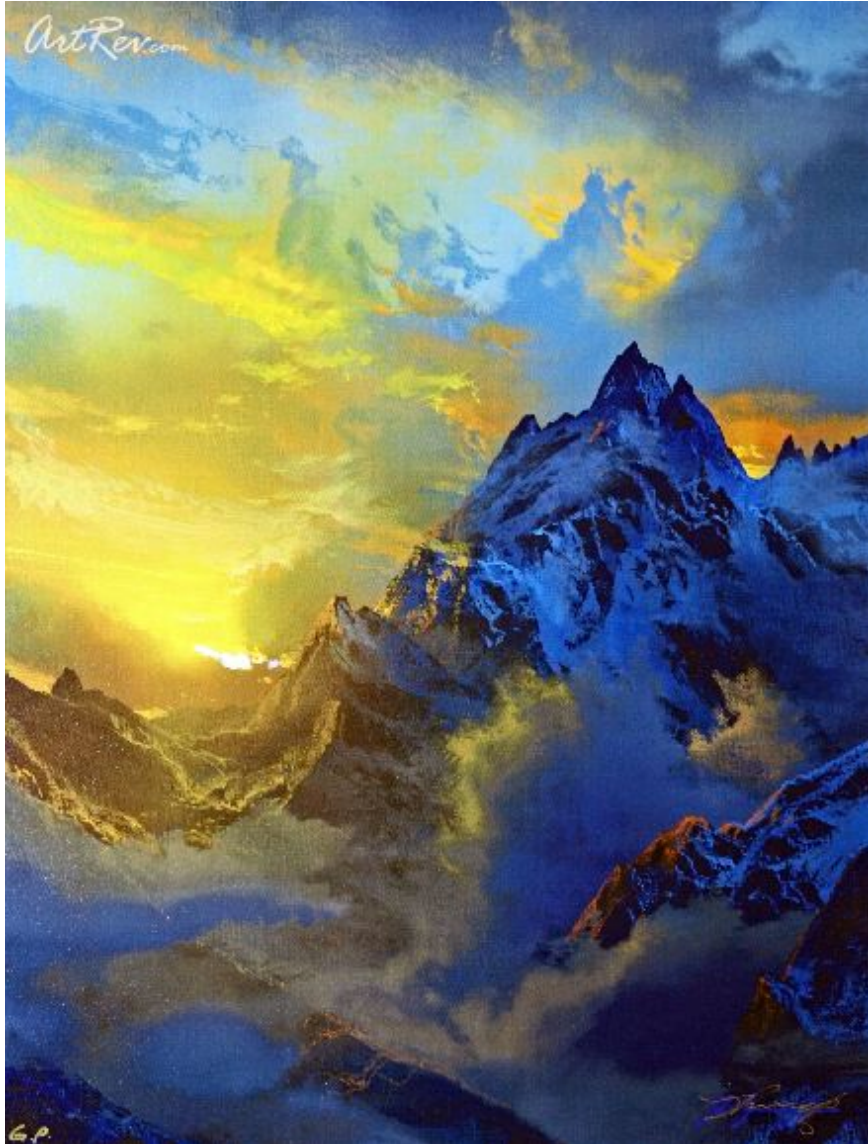


[Magic Is Forever](#) by [Dale Terbush](#)

Hand Embellished Giclee on Canvas - Main Subject: Landscape



Item Number
9657289114

Retail Value
\$500

ArtRev.com Price
\$250
You Save 50% Off [-\$250.00]

Dimensions (As Shown)
18W x 24H x 0.75D Inches
45.72W x 60.96H x 1.9D cm

Medium
Hand Embellished Giclee on Canvas

Edition
- Limited Edition of GP
- Hand-Signed 

Custom Framing

- Design-it-yourself and Save!
- Museum-Quality Framing
- Up to 50% off Gallery Prices



Frame Your Artwork Online & Save!

Did you know that you can custom frame this artwork to your exact taste and specifications. Spark your own creativity and frame your artwork in as little as 2 minutes in three easy steps! Our Online frame shop offers museum quality framing services at prices up to 50% off your local gallery or frame shop. [See art collection](#) .

About Dale Terbush

Dale TerBush was born in Elmhurst a suburb of Chicago. Soon thereafter his family moved to Southern California s San Fernando Valley. As a young child he began what was to be his life calling-he began to paint. Such Intuitiveness and burgeoning creativity early on provided him with a desire to excel and thus pursue his natural talents.

Getting to the point of painting exclusively has been a challenging, yet very insightful path for TerBush. Initially trying to find A Real Job, he was fortunate to find a career in design that kept him centered in a facet of the art world. Interior design of a large chain of restaurants allowed him to bring his talents to the awareness of the public. Painting a mural on a focal wall of a restaurant gained notice and praise by the restaurant s president. Soon TerBush became head of the interior design department for the company and then worked his way to the position of Vice President. Success in the business world was achieved, so much so that TerBush has designed over 300 establishments. Once again the prolific artist rose to the top and achieved success in this artistic field.

Ever the enthusiast, TerBush found that life in the corporate world was lacking the outlet for his drive and desire to paint full time. So being an adventurer, he headed for Santa Fe, New Mexico in the early 1990s to pursue his ultimate dream. Painting became his one true passion and propelled him in to the competitive art scene of Santa Fe. TerBush found his audience. In record speed the artist built a following of avid collectors and his dream soon became a reality.

TerBush captures a landscape that comes from within his own imagination. It flows from his own sense of spirit and self. TerBush, a poet with paint, evokes the emotional response as in romantic prose. Each TerBush landscape is a unique dream world. Initially familiar, a closer look reveals a world of its own. The painting becomes an experience rather than merely a sensation. The romantic visions are often compared to the Hudson River School the 19th Century body of artists who glorified nature, creating Eden-like scenes of lakes, rivers, mountains and other pastoral subjects. In his paintings an intensity is found in the use of color and light. TerBush is a Master at illumination and the use of exciting, yet unexpected, color. Some have even compared his use of color to the 20th Century Master Maxfield Parrish.

Hand Embellished Giclee on Canvas

Giclee [zhee-clay] is a French term meaning a 'squirt or spray of ink'. This process utilizes sophisticated printing techniques whereby an industrial 8-Color to 12-Color inkjet printer sprays a staggering four million droplets of ink per second onto archival fine art paper or canvas. Requiring highly sophisticated printers and special pigment inks for an extremely wide color gamut, this blend of fine art and state-of-the-art technology produces exceptional fine art prints. Giclee prints are usually coated with a high quality gloss or varnish to minimize abrasion and increase resistance to image fading. Additionally, protective coatings protect expensive prints against moisture.

Giclee prints render deep, saturated colors and retain minute detail, subtle tints and blends. The quality of the giclee print rivals traditional silver-halide and gelatin printing processes and is commonly found in museums, art galleries, and photographic galleries.

The giclee printing process provides better color accuracy than other means of reproduction. The prints may be hand embellished by the artist using paint, ink and gold foil stamping for a mixed media effect. Giclee prints are sometimes mistakenly referred to as Iris prints, which are 4-Color ink-jet prints from a printer pioneered in the late 1970s by Iris Graphics.

Numerous examples of giclee prints can be found in New York City at the Metropolitan Museum, the Museum of Modern Art, and the Chelsea Galleries. Recent auctions of giclee prints have fetched as much as \$20,000.

Copyright Notice: This document was generated on ArtRev.com on 2/20/2018 12:25:41 PM (U.S. Eastern Time Zone) - Copyright 2018 ArtRev.com, Inc. All Rights Reserved. The entire contents of this brochure is the property of ArtRev.com. You may not modify, copy, reproduce, republish, or distribute any portion of this brochure without the prior express written consent of ArtRev.com, Inc.

Authenticity & Price Match Guarantee: Shop with confidence. ArtRev.com is proud to be the first online art retailer to offer a " [lifetime authenticity guarantee](#) " with every limited edition or original work of art. Most limited edition and original artworks ship with a Certificate of Authenticity free of charge. This certificate is an official and valuable document that most insurance companies require in order to insure artworks against damage or theft. ArtRev.com will make every possible attempt to match or beat the advertised price of any major Internet competitor, art gallery, or frame shop; given that they are authorized to sell the item from the

publisher or artist, and have the exact item in stock available for immediate sale.

Pricing & Availability: Due to the dynamic nature of the ArtRev.com website, prices and availability are subject to change without notice. ArtRev.com is not responsible for any pricing errors.