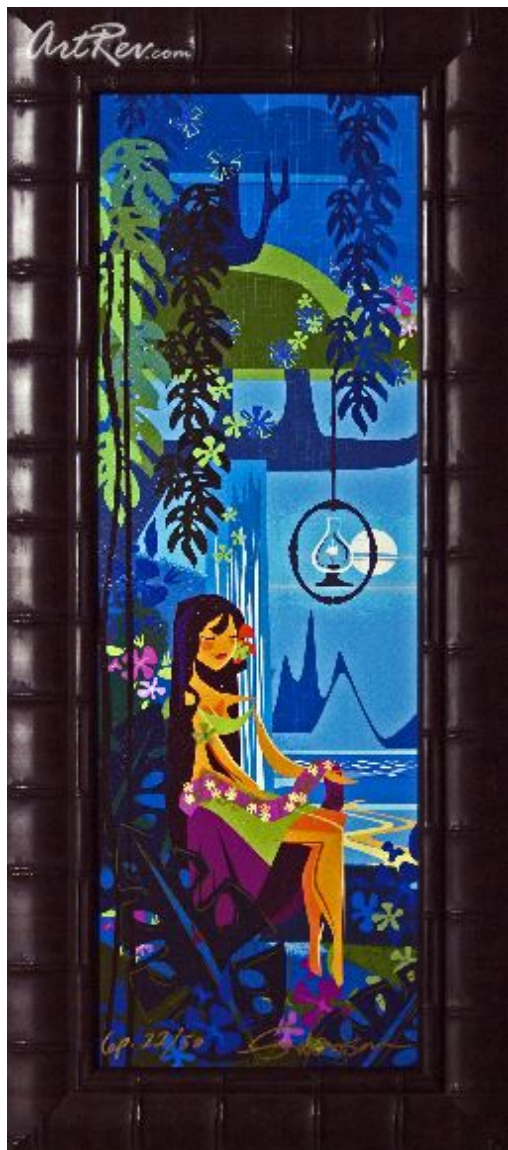


[The Lei Maker](#) by [Mark Swanson](#)

Giclee on Canvas - Main Subject: Animation & Cartoon



Item Number

9613688677

Retail Value

\$1,100

ArtRev.com Price

\$550

You Save 50% Off [-\$550.00]

Dimensions (As Shown)

15W x 35H x 1.25D Inches


38.1W x 88.9H x 3.18D cm


Medium

Giclee on Canvas

Edition

- Limited Edition of 395

- Hand-Signed 

- Numbered 

About Mark Swanson

Mark Swanson's enchanting art glows with brilliant color, graceful shapes, and beaming optimism all set in a world of lush tropical splendor. His artistic vision was shaped in California during the days when "Good Vibrations" and "Sgt. Pepper" were wafting down the beach from a new 67' mustang convertible. Swanson spent his early professional years painting record covers, concert posters, and making animated TV commercials and short experimental animated films. In the mid eighties Swanson was hired to create the layouts and backgrounds for Steven Spielberg's "An American Tale" and then for Spielberg and George Lucas's "Land Before Time".

Swanson pioneered the use of computers for use in hand drawn feature animation and became the Director of Computer Animation for several animated feature films. Swanson started his own studio working on feature animation and live action films with companies such as Hanna-Barbera, Turner Films, MGM, and Disney. During his many happy and successful years in

animation, Swanson continued to develop the art he had started as a young man.

Giclee on Canvas

Giclee [zhee-clay] is a French term meaning a 'squirt or spray of ink'. This process utilizes sophisticated printing techniques whereby an industrial 8-Color to 12-Color inkjet printer sprays a staggering four million droplets of ink per second onto archival fine art paper or canvas. Requiring highly sophisticated printers and special pigment inks for an extremely wide color gamut, this blend of fine art and state-of-the-art technology produces exceptional fine art prints. Giclee prints are usually coated with a high quality gloss or varnish to minimize abrasion and increase resistance to image fading. Additionally, protective coatings protect expensive prints against moisture.

Giclee prints render deep, saturated colors and retain minute detail, subtle tints and blends. The quality of the giclee print rivals traditional silver-halide and gelatin printing processes and is commonly found in museums, art galleries, and photographic galleries.

The giclee printing process provides better color accuracy than other means of reproduction. The prints may be hand embellished by the artist using paint, ink and gold foil stamping for a mixed media effect. Giclee prints are sometimes mistakenly referred to as Iris prints, which are 4-Color ink-jet prints from a printer pioneered in the late 1970s by Iris Graphics.

Numerous examples of giclee prints can be found in New York City at the Metropolitan Museum, the Museum of Modern Art, and the Chelsea Galleries. Recent auctions of giclee prints have fetched as much as \$20,000.

Copyright Notice: This document was generated on ArtRev.com on 4/21/2018 2:12:58 AM (U.S. Eastern Time Zone) - Copyright 2018 ArtRev.com, Inc. All Rights Reserved. The entire contents of this brochure is the property of ArtRev.com. You may not modify, copy, reproduce, republish, or distribute any portion of this brochure without the prior express written consent of ArtRev.com, Inc.

Authenticity & Price Match Guarantee: Shop with confidence. ArtRev.com is proud to be the first online art retailer to offer a "[lifetime authenticity guarantee](#)" with every limited edition or original work of art. Most limited edition and original artworks ship with a Certificate of Authenticity free of charge. This certificate is an official and valuable document that most insurance companies require in order to insure artworks against damage or theft. ArtRev.com will make every possible attempt to match or beat the advertised price of any major Internet competitor, art gallery, or frame shop; given that they are authorized to sell the item from the publisher or artist, and have the exact item in stock available for immediate sale.

Pricing & Availability: Due to the dynamic nature of the ArtRev.com website, prices and availability are subject to change without notice. ArtRev.com is not responsible for any pricing errors.