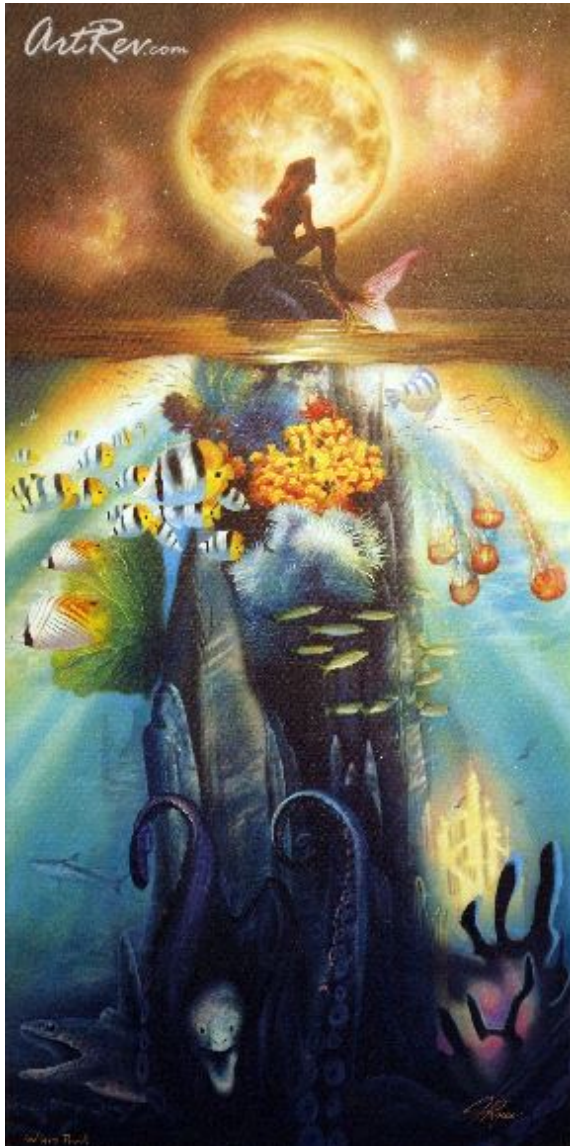


[Fathoms Below](#) by [John Rowe](#)

Giclee on Canvas - Main Subject: Fantasy & Dreamscape



Item Number

9508887629

Retail Value

\$595

ArtRev.com Price

\$395

You Save 34% Off [-\$200.00]

Dimensions (As Shown)

18W x 36H Inches

45.72W x 91.44H cm

Medium

Giclee on Canvas

Edition

- Edition Size is Unknown
- Hand-Signed 
- Numbered 

Custom Framing

- Design-it-yourself and Save!
- Museum-Quality Framing
- Up to 50% off Gallery Prices



Frame Your Artwork Online & Save!

Did you know that you can custom frame this artwork to your exact taste and specifications. Spark your own creativity and frame your artwork in as little as 2 minutes in three easy steps! Our Online frame shop offers museum quality framing services at prices up to 50% off your local gallery or frame shop. [See art collection](#) .

About John Rowe

John received his training at the Art Center College of Design and began his career as an illustrator. His paintings have appeared on movie posters, books, billboards, magazines and advertisements throughout the country and around the world.

Seeking an additional outlet for his creative vision, John began his Horse Series, bringing together equine beauty and power with emotions of the human spirit. When the publishers of Walter Farley's *The Black Stallion* saw John's work, they were inspired to re-issue this classic series, commissioning 24 new paintings by John for the covers.

"My artwork is meant to recall the beauty, majesty and mystery of the life we live, and the world we live it in. Painting the small delicacy of the light on a child's face, or the overwhelming power and grace of the sky at sunrise, is my attempt to capture some of that wonder. Through my work I hope to remind you and myself how truly wonderful, complex, and vivid life is. Whether we are looking into the eyes of someone we love, or struggling just to breathe, life is a priceless gift."

John has maintained a successful painting career for nearly 20 years.

Giclee on Canvas

Giclee [zhee-clay] is a French term meaning a 'squirt or spray of ink'. This process utilizes sophisticated printing techniques whereby an industrial 8-Color to 12-Color inkjet printer sprays a staggering four million droplets of ink per second onto archival fine art paper or canvas. Requiring highly sophisticated printers and special pigment inks for an extremely wide color gamut, this blend of fine art and state-of-the-art technology produces exceptional fine art prints. Giclee prints are usually coated with a high quality gloss or varnish to minimize abrasion and increase resistance to image fading. Additionally, protective coatings protect expensive prints against moisture.

Giclee prints render deep, saturated colors and retain minute detail, subtle tints and blends. The quality of the giclee print rivals traditional silver-halide and gelatin printing processes and is commonly found in museums, art galleries, and photographic galleries.

The giclee printing process provides better color accuracy than other means of reproduction. The prints may be hand embellished by the artist using paint, ink and gold foil stamping for a mixed media effect. Giclee prints are sometimes mistakenly referred to as Iris prints, which are 4-Color ink-jet prints from a printer pioneered in the late 1970s by Iris Graphics.

Numerous examples of giclee prints can be found in New York City at the Metropolitan Museum, the Museum of Modern Art, and the Chelsea Galleries. Recent auctions of giclee prints have fetched as much as \$20,000.

Copyright Notice: This document was generated on ArtRev.com on 8/22/2017 5:24:20 AM (U.S. Eastern Time Zone) - Copyright 2017 ArtRev.com, Inc. All Rights Reserved. The entire contents of this brochure is the property of ArtRev.com. You may not modify, copy, reproduce, republish, or distribute any portion of this brochure without the prior express written consent of ArtRev.com, Inc.

Authenticity & Price Match Guarantee: Shop with confidence. ArtRev.com is proud to be the first online art retailer to offer a "[lifetime authenticity guarantee](#)" with every limited edition or original work of art. Most limited edition and original artworks ship with a Certificate of Authenticity free of charge. This certificate is an official and valuable document that most insurance companies require in order to insure artworks against damage or theft. ArtRev.com will make every possible attempt to match or beat the advertised price of any major Internet competitor, art gallery, or frame shop; given that they are authorized to sell the item from the publisher or artist, and have the exact item in stock available for immediate sale.

Pricing & Availability: Due to the dynamic nature of the ArtRev.com website, prices and availability are subject to change without notice. ArtRev.com is not responsible for any pricing errors.