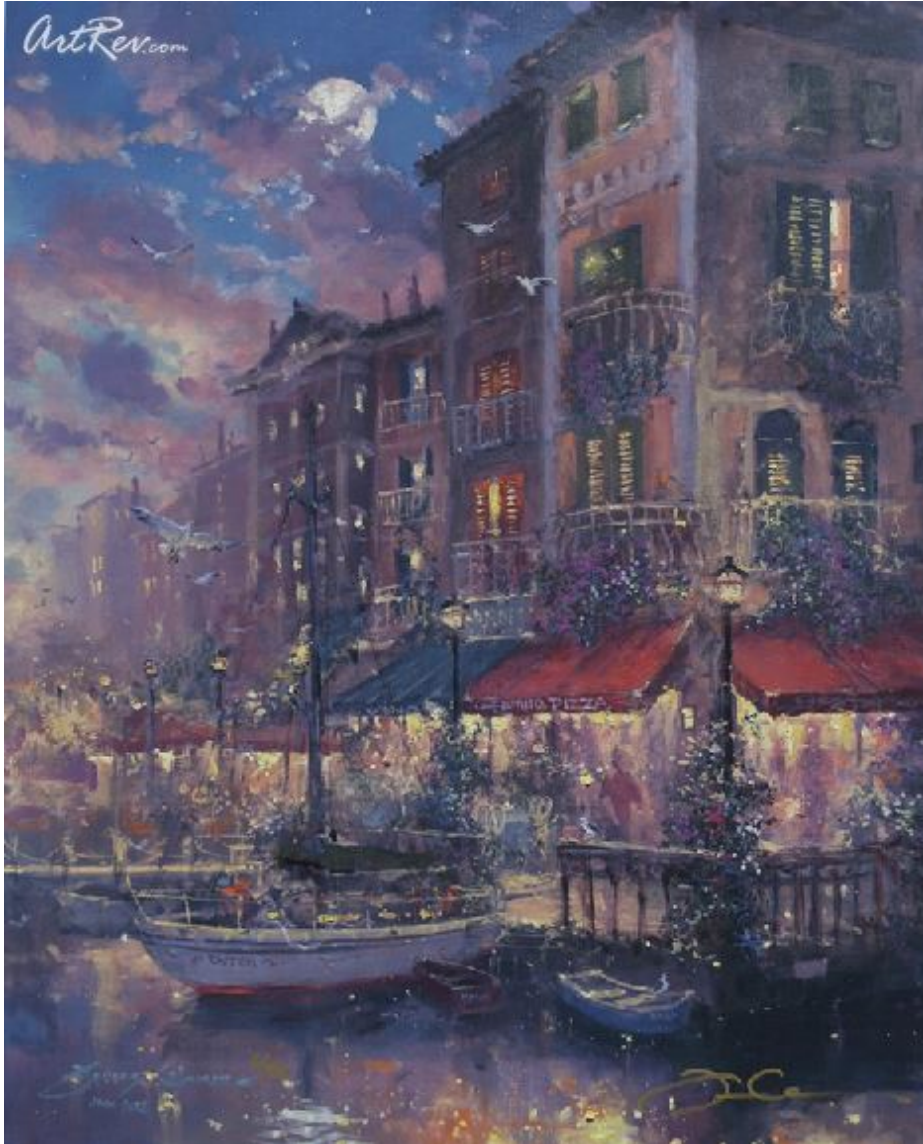


[The Evening Begins](#) by [James Coleman](#)  
Giclee on Canvas - Main Subject: Landscape



**Item Number**  
9177684318

**Retail Value**  
\$540

**ArtRev.com Price**  
\$520  
You Save 4% Off [-\$20.00]

**Dimensions (As Shown)**  
16W x 20H Inches  
40.64W x 50.8H cm

**Medium**  
Giclee on Canvas

**Edition**  
- Limited Edition of 95  
- Hand-Signed   
- Numbered 

### Custom Framing

- Design-it-yourself and Save!
- Museum-Quality Framing
- Up to 50% off Gallery Prices



### Frame Your Artwork Online & Save!

Did you know that you can custom frame this artwork to your exact taste and specifications. Spark your own creativity and frame your artwork in as little as 2 minutes in three easy steps! Our Online frame shop offers museum quality framing services at prices up to 50% off your local gallery or frame shop. [See art collection](#) .

### About James Coleman

James Coleman was born in Hollywood, California in 1949. As a youth, his creative abilities seemed to dominate his world. Though he lacked the athletic skills of his young friends, he more than made up for it with imagination and ingenuity. As a young man, his interest in filmmaking and fine art would mark the beginning of a long, successful career in animated films. Coleman began his career with Walt Disney Studios in the summer of 1969, when his mother, who had been working as a secretary with Disney since the Hyperion days, got him a job in the studio's mailroom. His big break came when he entered one of his paintings in the studio art show. Several of the Disney artists viewing his work, saw his potential and realized he had an untapped ability and encouraged him to go into animation background painting.

Walt Disney Productions welcomed his creative energies. His first film, "Winnie, the Pooh and Tigger, too", sparked his interest not only in painting backgrounds but also in background design and color styling. After completing, "The Rescuers", his first feature film, he was promoted to Background Department Supervisor, a position he held for nearly seventeen years. During that time, he personally hired and trained a select group of artists, whom he would work with for most of his career at Disney. While at Disney, James styled and worked on twelve films and over thirty short subjects which included "Mickey's Christmas Carol", "The Fox and the Hound", "The Great Mouse Detective", "The Black Cauldron", "The Little Mermaid", and Academy Award-winning, "Beauty and the Beast". All of which came to life with James Coleman's background images gracing the silver screen.

In 1991, after twenty-two years with Disney, James left to pursue a new career. He was ready to devote all of his time and talent to the love of his life, fine art. Today he continues to illuminate the art world with vibrant colors, gentle moods, powerful design and exquisite detail.

Coleman works in oil, watercolor, gouache and pastel. His work is impressionistic and luminous. His pieces intrigue the eye and touch the heart. His paintings are warm, inviting and unique. A master of color, light and design, Coleman has become one of the most collected and sought after artists around the world. James Coleman pieces can be found in many fine, personal and corporate collections including that of the Disney family.

James is a naturalist and environmentalist who involve himself with the National Parks and other environmental organizations.

## Giclee on Canvas

Giclee [zhee-clay] is a French term meaning a 'squirt or spray of ink'. This process utilizes sophisticated printing techniques whereby an industrial 8-Color to 12-Color inkjet printer sprays a staggering four million droplets of ink per second onto archival fine art paper or canvas. Requiring highly sophisticated printers and special pigment inks for an extremely wide color gamut, this blend of fine art and state-of-the-art technology produces exceptional fine art prints. Giclee prints are usually coated with a high quality gloss or varnish to minimize abrasion and increase resistance to image fading. Additionally, protective coatings protect expensive prints against moisture.

Giclee prints render deep, saturated colors and retain minute detail, subtle tints and blends. The quality of the giclee print rivals traditional silver-halide and gelatin printing processes and is commonly found in museums, art galleries, and photographic galleries.

The giclee printing process provides better color accuracy than other means of reproduction. The prints may be hand embellished by the artist using paint, ink and gold foil stamping for a mixed media effect. Giclee prints are sometimes mistakenly referred to as Iris prints, which are 4-Color ink-jet prints from a printer pioneered in the late 1970s by Iris Graphics.

Numerous examples of giclee prints can be found in New York City at the Metropolitan Museum, the Museum of Modern Art, and the Chelsea Galleries. Recent auctions of giclee prints have fetched as much as \$20,000.

---

**Copyright Notice:** This document was generated on [ArtRev.com](http://ArtRev.com) on 2/20/2018 8:04:23 AM (U.S. Eastern Time Zone) - Copyright 2018 ArtRev.com, Inc. All Rights Reserved. The entire contents of this brochure is the property of ArtRev.com. You may not modify, copy, reproduce, republish, or distribute any portion of this brochure without the prior express written consent of ArtRev.com, Inc.

**Authenticity & Price Match Guarantee:** Shop with confidence. ArtRev.com is proud to be the first online art retailer to offer a "[lifetime authenticity guarantee](#)"

with every limited edition or original work of art. Most limited edition and original artworks ship with a Certificate of Authenticity free of charge. This certificate is an official and valuable document that most insurance companies require in order to insure artworks against damage or theft. ArtRev.com will make every possible attempt to match or beat the advertised price of any major Internet competitor, art gallery, or frame shop; given that they are authorized to sell the item from the publisher or artist, and have the exact item in stock available for immediate sale.

**Pricing & Availability:** Due to the dynamic nature of the ArtRev.com website, prices and availability are subject to change without notice. ArtRev.com is not responsible for any pricing errors.