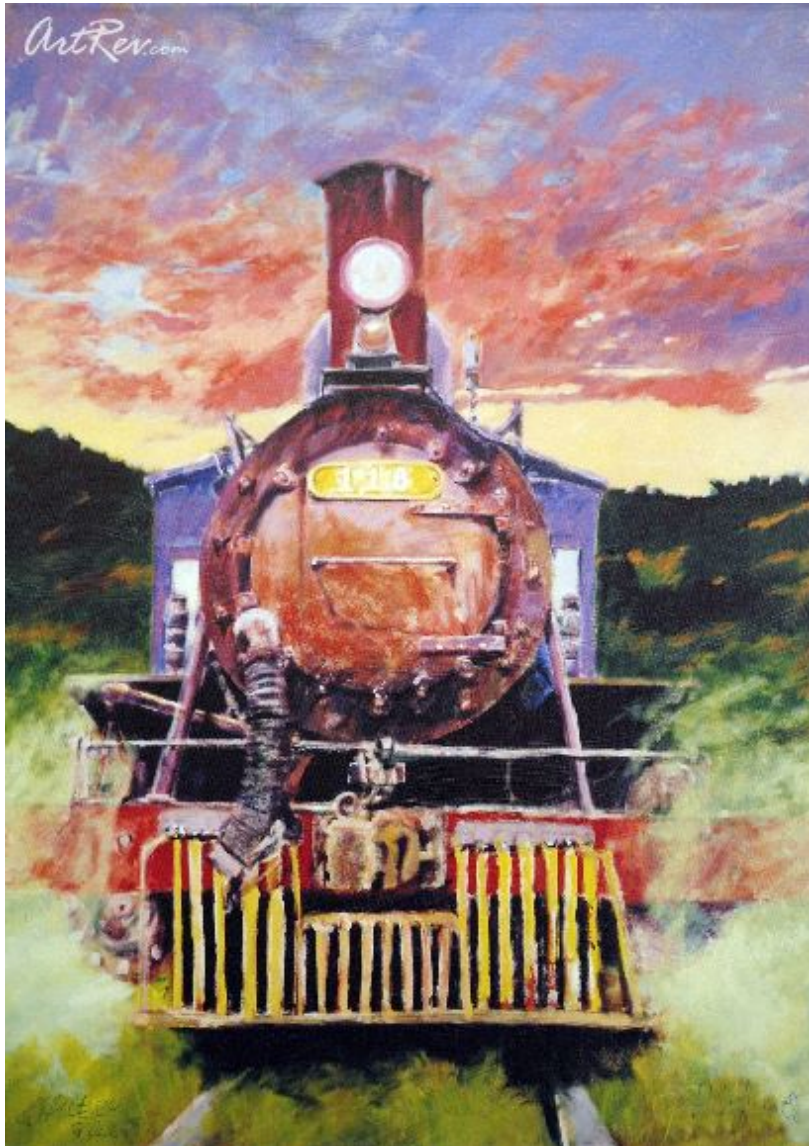


[La Portena](#) by [Aldo Luongo](#)

Giclee on Canvas - Main Subject: Automotive



Item Number

9121783759

Retail Value

\$750

ArtRev.com Price

\$525

You Save 30% Off [-\$225.00]

Dimensions (As Shown)

18W x 25H Inches

45.72W x 63.5H cm

Medium

Giclee on Canvas

Edition

- Edition Size is Unknown
- Hand-Signed 
- Numbered 

Custom Framing

- Design-it-yourself and Save!
- Museum-Quality Framing
- Up to 50% off Gallery Prices



Frame Your Artwork Online & Save!

Did you know that you can custom frame this artwork to your exact taste and specifications. Spark your own creativity and frame your artwork in as little as 2 minutes in three easy steps! Our Online frame shop offers museum quality framing services at prices up to 50% off your local gallery or frame shop. [See art collection](#) .

About Aldo Luongo

Aldo Luongo was born in Buenos Aires, Argentina in 1941, of Italian heritage. Since as far back as he can remember, Luongo had two great passions: art and soccer. Shortly after his graduation from the Academy of Fine Arts in Buenos Aires in the early 1960s, Luongo came to the U.S. to play professional soccer for the New York Cosmos. After his athletic career was cut short due to an injury, he arrived in New York City with a dream to pursue his artwork full time.

In the early 70's, he had his first major success with multiple reproductions of his black & white drawings. Not only were these prints released to great critical acclaim, they were a huge commercial success as well (hundreds of thousands of pieces sold within several years). Aldo had put himself on the map as a major international artist.

Aldo Luongo has continued his reign at the top of the contemporary art world for almost four decades a distinction that puts him in a class of his own. He has received numerous awards and honors, including being named a 3-time official Olympic Artist (Summer 1988, Summer 1996, and Winter 2002); an official World Cup Artist (1998); an official U.S. Women's World Cup Artist (1999); and the 1999 Sports Artist of the Year (U.S. Sports Museum.)

From his acrylics to his fine art prints, all of Aldo Luongo's pieces embody the same sense of fluidity and intensity, the result of a true artist engaged in the passionate process of creation. His bold, impressionistic style has often been referred to as Romance on Canvas . Central to all of Luongo's paintings is the balance between memory and hope, sorrow and humor, freedom and control. These dynamics are clearly apparent in his figurative works, especially those portraying "The Hawk", an archetypal character based on the memory of his father and the discovery of his future self. Aldo Luongo's artwork captures more than just the viewers gaze& it echoes the experiences of life lived to the fullest.

Giclee on Canvas

Giclee [zhee-clay] is a French term meaning a 'spritz or spray of ink'. This process utilizes sophisticated printing techniques whereby an industrial 8-Color to 12-Color inkjet printer sprays a staggering four million droplets of ink per second onto archival fine art paper or canvas. Requiring highly sophisticated printers and special pigment inks for an extremely wide color gamut, this blend of fine art and state-of-the-art technology produces exceptional fine art prints. Giclee prints are usually coated with a high quality gloss or varnish to minimize abrasion and increase resistance to image fading. Additionally, protective coatings protect expensive prints against moisture.

Giclee prints render deep, saturated colors and retain minute detail, subtle tints and blends. The quality of the giclee print rivals traditional silver-halide and gelatin printing processes and is commonly found in museums, art galleries, and photographic galleries.

The giclee printing process provides better color accuracy than other means of reproduction. The prints may be hand embellished by the artist using paint, ink and gold foil stamping for a mixed media effect. Giclee prints are sometimes mistakenly referred to as Iris prints, which are 4-Color ink-jet prints from a printer pioneered in the late 1970s by Iris Graphics.

Numerous examples of giclee prints can be found in New York City at the Metropolitan Museum, the Museum of Modern Art, and the Chelsea Galleries. Recent auctions of giclee prints have fetched as much as \$20,000.

Copyright Notice: This document was generated on ArtRev.com on 3/22/2018 9:53:51 AM (U.S. Eastern Time Zone) - Copyright 2018 ArtRev.com, Inc. All Rights Reserved. The entire contents of this brochure is the property of ArtRev.com. You may not modify, copy, reproduce, republish, or distribute any portion of this brochure without the prior express written consent of ArtRev.com, Inc.

Authenticity & Price Match Guarantee: Shop with confidence. ArtRev.com is proud to be the first online art retailer to offer a " [lifetime authenticity guarantee](#) " with every limited edition or original work of art. Most limited edition and original artworks ship with a Certificate of Authenticity free of charge. This certificate is an official and valuable document that most insurance companies require in order to insure artworks against damage or theft. ArtRev.com will make every possible attempt to match or beat the advertised price of any major Internet competitor, art gallery, or frame shop; given that they are authorized to sell the item from the publisher or artist, and have the exact item in stock available for immediate sale.

Pricing & Availability: Due to the dynamic nature of the ArtRev.com website, prices and availability are subject to change without notice. ArtRev.com is not responsible for any pricing errors.