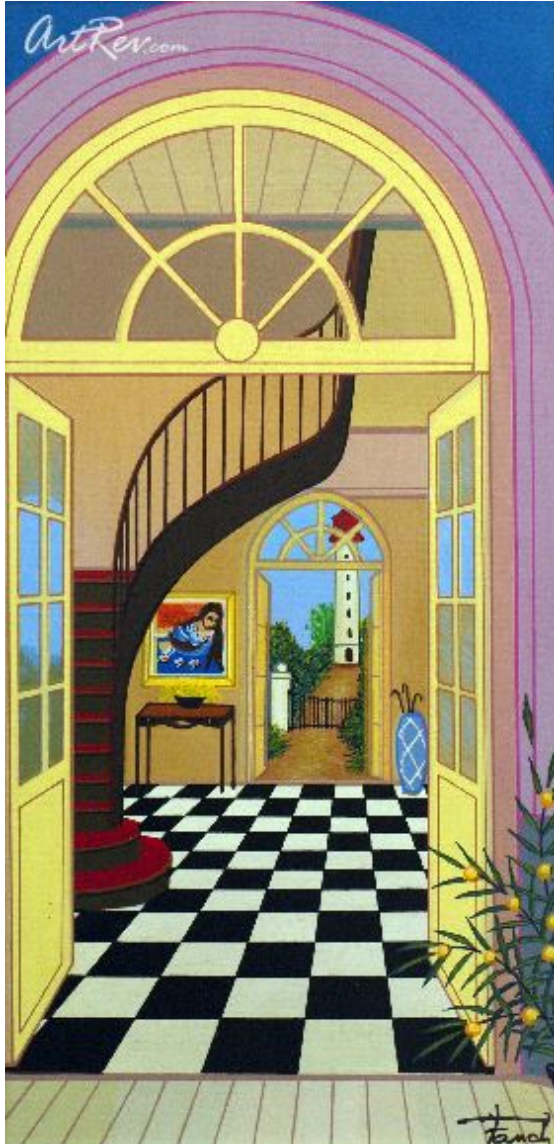


[Captain's Headquarters](#) by [Fanch Ledan](#)
Serigraph On Canvas - Main Subject: Abstract





Item Number
9075383295

Retail Value
\$550

ArtRev.com Price
\$450
You Save 18% Off [-\$100.00]

Dimensions (As Shown)
8.25W x 16H Inches
20.96W x 40.64H cm

Medium
Serigraph On Canvas

Edition
- Limited Edition of 250
- Hand-Signed 
- Numbered 

Custom Framing

- Design-it-yourself and Save!
- Museum-Quality Framing
- Up to 50% off Gallery Prices



Frame Your Artwork Online & Save!

Did you know that you can custom frame this artwork to your exact taste and specifications. Spark your own creativity and frame your artwork in as little as 2 minutes in three easy steps! Our Online frame shop offers museum quality framing services at prices up to 50% off your local gallery or frame shop. [See art collection](#) .

About Fanch Ledan

A self-taught artist François Ledan (signs his work: Fanch Ledan) has established a wide international reputation and his artwork has been well received by collectors internationally from Japan and Australia to Europe and the United States.

Art is never made in a vacuum and good art reflects the times in which it is made. A venerable art world axiom, this idea confronts us with particular clarity and force in the work of French-born painter, Fanch Ledan. He draws on the rhythms and elements from our contemporary visual environment to forge a distinctly original, late twentieth century vision. His vivid images are totally contemporary with classical nuances and the brightly streamlined look of modern media.

The marriage of interior and exterior setting is the recurring theme in much of Fanch Ledan's work. His "windows on the world" concept functions to bring the usual background elements into key focal point. Because interiors are generally uninhabited by human figures, we focus on the way his rooms blend art and architecture to form a balanced and harmonious elegance.

Serigraph On Canvas

Screen printing or Serigraphy is a printing technique that uses a woven mesh to support an ink blocking stencil. The attached stencil forms open areas of mesh that transfer ink as a sharp-edged image onto a substrate. A roller or squeegee is moved across the screen stencil forcing or pumping ink past the threads of the woven mesh in the open areas.

Credit is generally given to the artist Andy Warhol for popularizing screen printing identified as serigraphy, in the United States. Warhol is particularly identified with his 1962 depiction of actress Marilyn Monroe screen printed in garish colors.

Copyright Notice: This document was generated on [ArtRev.com](https://www.artrev.com) on 3/19/2018 10:30:09 PM (U.S. Eastern Time Zone) - Copyright 2018 ArtRev.com, Inc. All Rights Reserved. The entire contents of this brochure is the property of ArtRev.com. You may not modify, copy, reproduce, republish, or distribute any portion of this brochure without the prior express written consent of ArtRev.com, Inc.

Authenticity & Price Match Guarantee: Shop with confidence. ArtRev.com is proud to be the first online art retailer to offer a "[lifetime authenticity guarantee](#)" with every limited edition or original work of art. Most limited edition and original artworks ship with a Certificate of Authenticity free of charge. This certificate is an official and valuable document that most insurance companies require in order to insure artworks against damage or theft. ArtRev.com will make every possible attempt to match or beat the advertised price of any major Internet competitor, art gallery, or frame shop; given that they are authorized to sell the item from the publisher or artist, and have the exact item in stock available for immediate sale.

Pricing & Availability: Due to the dynamic nature of the ArtRev.com website, prices and availability are subject to change without notice. ArtRev.com is not responsible for any pricing errors.