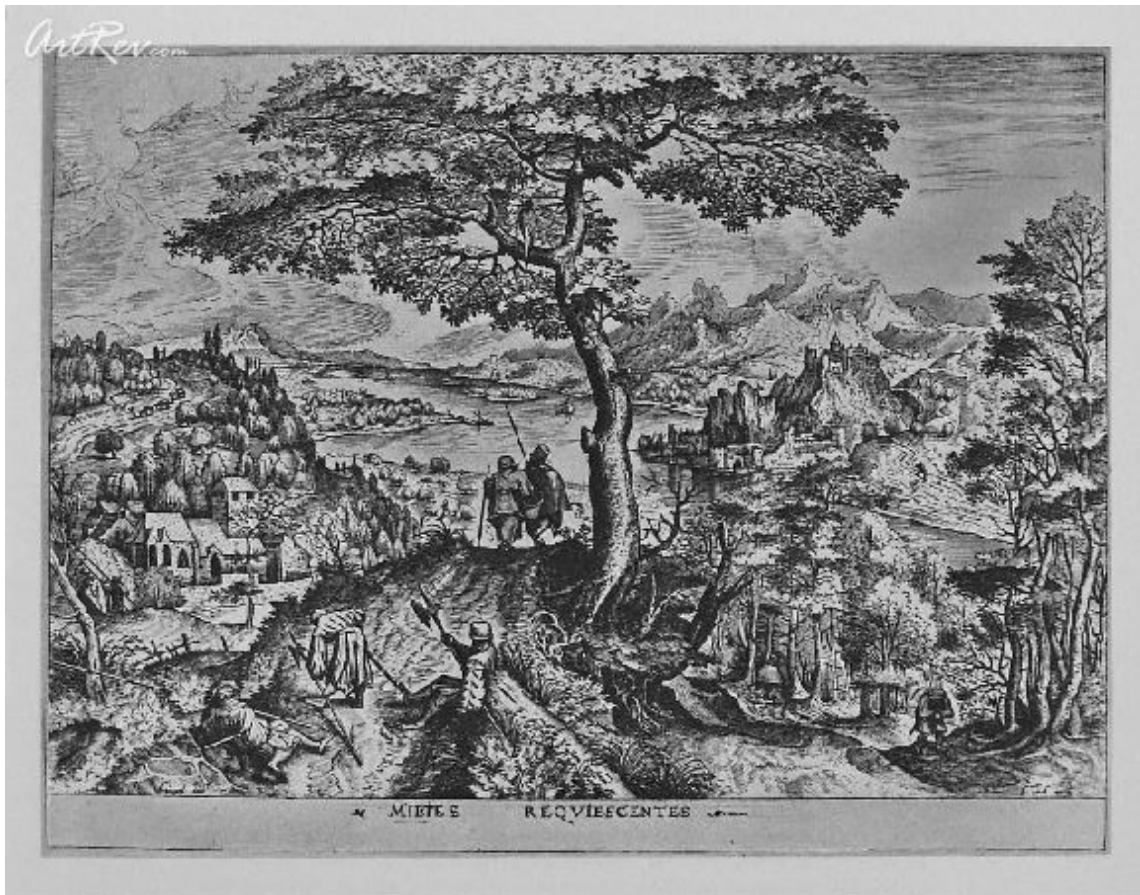


[Resting Soldiers](#) by [Pieter Brueghel the Elder](#)

Original Lithographic Bookplate - Main Subject: Renaissance



Item Number

9007382615

Retail Value

\$240

ArtRev.com Price

\$120

You Save 50% Off [-\$120.00]

Dimensions (As Shown)

8.5W x 6.5H Inches

21.59W x 16.51H cm

Medium

Original Lithographic Bookplate

Custom Framing

- Design-it-yourself and Save!
- Museum-Quality Framing
- Up to 50% off Gallery Prices



Frame Your Artwork Online & Save!

Did you know that you can custom frame this artwork to your exact taste and specifications. Spark your own creativity and frame your artwork in as little as 2 minutes in three easy steps! Our Online frame shop offers museum quality framing services at prices up to 50% off your local gallery or frame shop. [See art collection](#) .

About Pieter Brueghel the Elder

Pieter Brueghel the Elder was born around 1525 (the exact date is unknown) in the Latin Breda. However there is a bit of confusion about this place, because the Latin Breda could stand for the town Breda in Holland or for the Belgian town Bree. However Brueghel is certainly considered to be Belgian.

Brueghel's early influences include his teacher Pieter Coecke van Aelst and Hieronymus Bosch. Pieter Brueghel later married the daughter of his teacher, Mayke. In 1551 Brueghel was accepted as a master in the painters guild of Antwerp and only shortly after, he started travelling. Pieter Brueghel the Elder travelled to France and Italy, to finally settle in Brussels.

Brueghel often disguised himself as a peasant to acquire inspiration for his paintings. This led to his nickname "Peasant Brueghel". Brueghel often painted rural scenes, but is also known for painting wonderful landscapes. Brueghel was one of the first painters who painted landscapes for their own sake, rather than as a backdrop to a religious allegory.

During the last years of his life Bruegel was much influenced by Italian Renaissance art with its inclination towards the monumental. This can be seen in such works as *The Peasant Wedding*, *The Peasant Dance* and *The Peasant and the Birdnester*, where the figures are larger in scale, more in the foreground, with a lower viewpoint and less emphasis on the setting. However he still continued to produce works in his earlier style with small figures in panoramic settings and his only real relationship with the Italian style in any of his paintings is in the simplicity of form rather than in the idealization of character.

Pieter Brueghel the Elder died September 9, 1569, in Brussels.

Original Lithographic Bookplate

Sorry. No information about this medium is available.

Copyright Notice: This document was generated on [ArtRev.com](https://www.artrev.com) on 1/21/2018 11:33:39 AM (U.S. Eastern Time Zone) - Copyright 2018 ArtRev.com, Inc. All Rights Reserved. The entire contents of this brochure is the property of ArtRev.com. You may not modify, copy, reproduce, republish, or distribute any portion of this brochure without the prior express written consent of ArtRev.com, Inc.

Authenticity & Price Match Guarantee: Shop with confidence. ArtRev.com is proud to be the first online art retailer to offer a "[lifetime authenticity guarantee](#)" with every limited edition or original work of art. Most limited edition and original artworks ship with a Certificate of Authenticity free of charge. This certificate is an official and valuable document that most insurance companies require in order to insure artworks against damage or theft. ArtRev.com will make every possible attempt to match or beat the advertised price of any major Internet competitor, art gallery, or frame shop; given that they are authorized to sell the item from the publisher or artist, and have the exact item in stock available for immediate sale.

Pricing & Availability: Due to the dynamic nature of the ArtRev.com website, prices and availability are subject to change without notice. ArtRev.com is not responsible for any pricing errors.