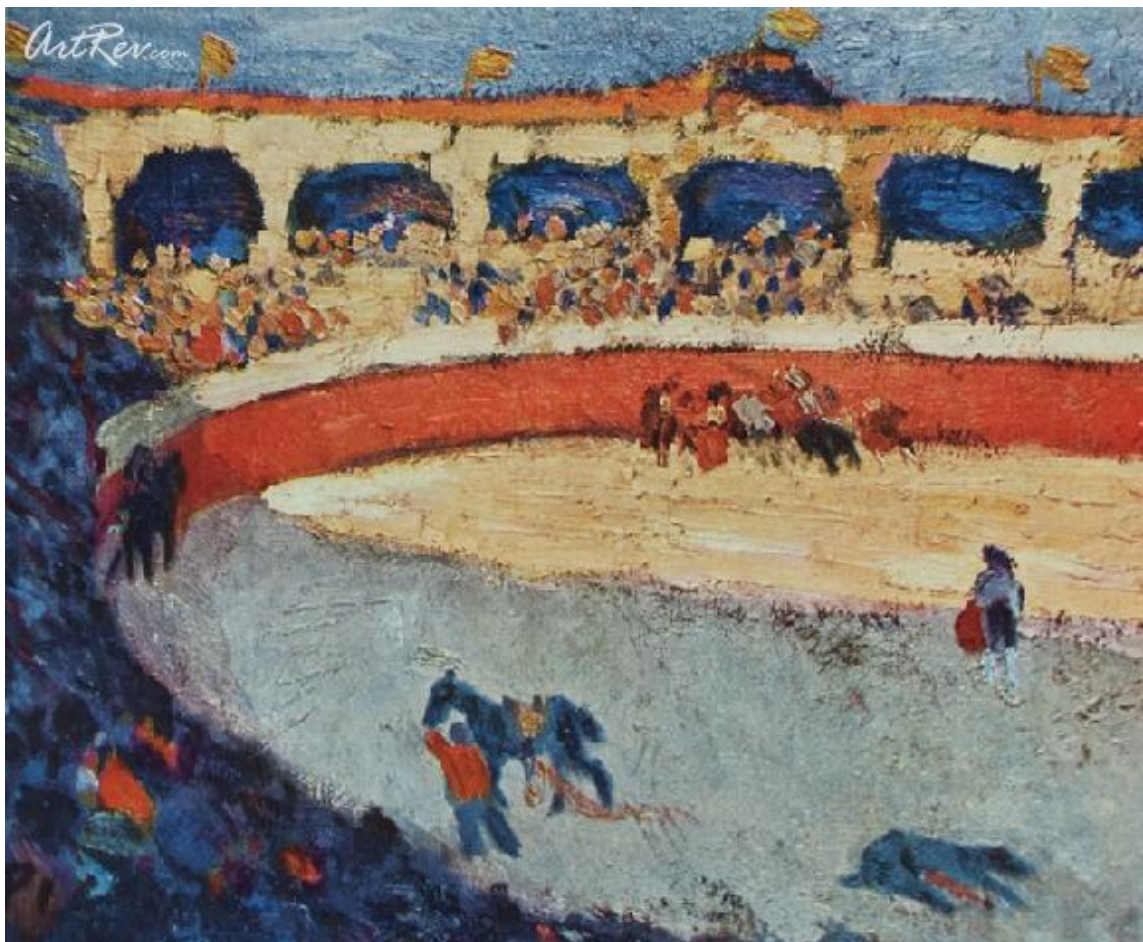


[Bullfight](#) by [Pablo Picasso](#)

Original Lithographic Bookplate - Main Subject: Abstract



Item Number

8897781519

Retail Value

\$100

ArtRev.com Price

\$19

You Save 81% Off [-\$81.00]

Dimensions (As Shown)

8.25W x 6.75H Inches

20.96W x 17.14H cm

Medium

Original Lithographic Bookplate

Custom Framing

- Design-it-yourself and Save!
- Museum-Quality Framing
- Up to 50% off Gallery Prices



Frame Your Artwork Online & Save!

Did you know that you can custom frame this artwork to your exact taste and specifications. Spark your own creativity and frame your artwork in as little as 2 minutes in three easy steps! Our Online frame shop offers museum quality framing services at prices up to 50% off your local gallery or frame shop. [See art collection](#) .

About Pablo Picasso

Pablo Picasso was born on October 25, 1881, in Málaga, Spain. The son of an academic painter, José Ruiz Blanco, he began to draw at an early age. In 1895, the family moved to Barcelona, and Picasso studied there at La Lonja, the academy of fine arts. His visit to Horta de Ebro from 1898 to 1899 and his association with the group at the café Els Quatre Gats about 1899 were crucial to his early artistic development. In 1900, Picasso's first exhibition took place in Barcelona, and that fall he went to Paris for the first of several stays during the early years of the century. Picasso settled in Paris in April 1904, and soon his circle of friends included Guillaume Apollinaire, Max Jacob, Gertrude and Leo Stein, as well as two dealers, Ambroise Vollard and Berthe Weill.



His style developed from the Blue Period (1901-04) to the Rose Period (1905) to the pivotal work *Les Femmes d'Alger* (1907), and the subsequent evolution of Cubism from an Analytic phase (ca. 1908-11), through its Synthetic phase (beginning in 1912-13). Picasso's collaboration on ballet and theatrical productions began in 1916. Soon thereafter, his work was characterized by neoclassicism and a renewed interest in drawing and figural representation. In the 1920s, the artist and his wife, Olga (whom he had married in 1918), continued to live in Paris, to travel frequently, and to spend their summers at the beach. From 1925 into the 1930s, Picasso was involved to a certain degree with the Surrealists, and from the fall of 1931 he was especially interested in making sculpture. In 1932, with large exhibitions at the Galeries Georges Petit, Paris, and the Kunsthaus Zürich, and the publication of the first volume of Christian Zervos's catalogue raisonné, Picasso's fame increased markedly.

By 1936, the Spanish Civil War had profoundly affected Picasso, the expression of which culminated in his painting *Guernica* (1937, Museo Nacional Centro de Arte Reina Sofía, Madrid). Picasso's association with the Communist Party began in 1944. From the late 1940s, he lived in the South of France. Among the enormous number of Picasso exhibitions that were held during the artist's lifetime, those at the Museum of Modern Art, New York, in 1939 and the Musée des Arts Décoratifs, Paris, in 1955 were most significant. In 1961, the artist married Jacqueline Roque, and they moved to Mougins. There Picasso continued his prolific work in painting, drawing, prints, ceramics, and sculpture until his death April 8, 1973.

Original Lithographic Bookplate

Sorry. No information about this medium is available.

Copyright Notice: This document was generated on [ArtRev.com](https://www.artrev.com) on 10/21/2017 10:59:05 PM (U.S. Eastern Time Zone) - Copyright 2017 ArtRev.com, Inc. All Rights Reserved. The entire contents of this brochure is the property of ArtRev.com. You may not modify, copy, reproduce, republish, or distribute any portion of this brochure without the prior express written consent of ArtRev.com, Inc.

Authenticity & Price Match Guarantee: Shop with confidence. ArtRev.com is proud to be the first online art retailer to offer a "[lifetime authenticity guarantee](#)" with every limited edition or original work of art. Most limited edition and original artworks ship with a Certificate of Authenticity free of charge. This certificate is an official and valuable document that most insurance companies require in order to insure artworks against damage or theft. ArtRev.com will make every possible attempt to match or beat the advertised price of any major Internet competitor, art gallery, or frame shop; given that they are authorized to sell the item from the publisher or artist, and have the exact item in stock available for immediate sale.

Pricing & Availability: Due to the dynamic nature of the ArtRev.com website, prices and availability are subject to change without notice. ArtRev.com is not responsible for any pricing errors.