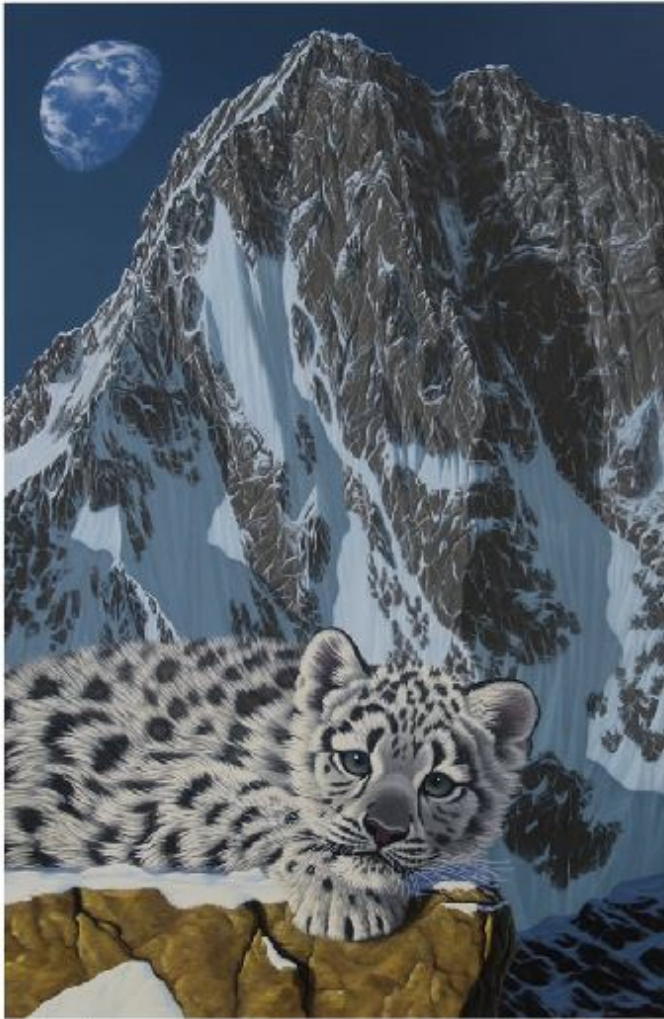


[My Sister's Himalayan Home II](#) by [Schim Schimmel](#)

Serigraph on Paper - Main Subject: Animals & Birds

ArtRev.com



Item Number

8488077422

Retail Value

\$750

ArtRev.com Price

\$325

You Save 57% Off [-\$425.00]

Dimensions (As Shown)

19W x 27.25H Inches


48.26W x 69.22H cm


Medium

Serigraph on Paper

Edition

- Limited Edition of 395

- Hand-Signed 

- Numbered 

Custom Framing

- Design-it-yourself and Save!
- Museum-Quality Framing
- Up to 50% off Gallery Prices



Frame Your Artwork Online & Save!

Did you know that you can custom frame this artwork to your exact taste and specifications. Spark your own creativity and frame your artwork in as little as 2 minutes in three easy steps! Our Online frame shop offers museum quality framing services at prices up to 50% off your local gallery or frame shop. [See art collection](#) .

About Schim Schimmel

"My greatest joy is found in the act of painting and sharing my paintings with others& In the end, it's a shared experience between artist and viewer."

Snow leopards, white tigers, elephants and lions; the earth, the moon, galaxies and nebulas; these are the subjects that leap off a Schimmel canvas and into the hearts of those who see his work. For over twenty years now, Schim Schimmel has been painting in a style uniquely his own, expressing on canvas his love and awe for this incredible planet, its animals, and the universe that brought them into being.

Schim knew early on that he longed to be an artist, in part because his father was a well known watercolorist and art instructor. As a young child, Schim would sit and watch his father paint, fascinated by the creative process. By the time he was in his teens, Schim began taking formal lessons at his father's art school in Phoenix, Arizona. Soon Schim began teaching classes of his own and continued teaching for over seven years, while at the same time developing his own artistic talents as a landscape painter.

From the mid-seventies to the mid-eighties Schim's reputation as a landscape painter continued to grow. As the years passed, however, he became more and more creatively restless. No longer satisfied to be just another landscape artist, Schim embarked on a creative and spiritual quest to develop his own unique style of art that would send a powerful environmental message to others.

The result of this period of exponential growth led to the style of painting he is known for today.

In 1991, Schimmel's artwork was shown at the Tokyo Art Expo in Japan. Thus began a remarkable relationship between Schimmel and Japan that has continued to grow to this day. In the last fifteen years, Schimmel has made over 45 trips to Japan, attending hundreds of exhibitions in well over 50 cities throughout the four main islands of the country.

Serigraph on Paper

Screen printing or Serigraphy is a printing technique that uses a woven mesh to support an ink blocking stencil. The attached stencil forms open areas of mesh that transfer ink as a sharp-edged image onto a substrate. A roller or squeegee is moved across the screen stencil forcing or pumping ink past the threads of the woven mesh in the open areas.

Credit is generally given to the artist Andy Warhol for popularizing screen printing identified as serigraphy, in the United States. Warhol is particularly identified with his 1962 depiction of actress Marilyn Monroe screen printed in garish colors.

Copyright Notice: This document was generated on ArtRev.com on 1/22/2018 5:32:59 AM (U.S. Eastern Time Zone) - Copyright 2018 ArtRev.com, Inc. All Rights Reserved. The entire contents of this brochure is the property of ArtRev.com. You may not modify, copy, reproduce, republish, or distribute any portion of this brochure without the prior express written consent of ArtRev.com, Inc.

Authenticity & Price Match Guarantee: Shop with confidence. ArtRev.com is proud to be the first online art retailer to offer a " [lifetime authenticity guarantee](#) " with every limited edition or original work of art. Most limited edition and original artworks ship with a Certificate of Authenticity free of charge. This certificate is an official and valuable document that most insurance companies require in order to insure artworks against damage or theft. ArtRev.com will make every possible attempt to match or beat the advertised price of any major Internet competitor, art gallery, or frame shop; given that they are authorized to sell the item from the publisher or artist, and have the exact item in stock available for immediate sale.

Pricing & Availability: Due to the dynamic nature of the ArtRev.com website, prices and availability are subject to change without notice. ArtRev.com is not responsible for any pricing errors.