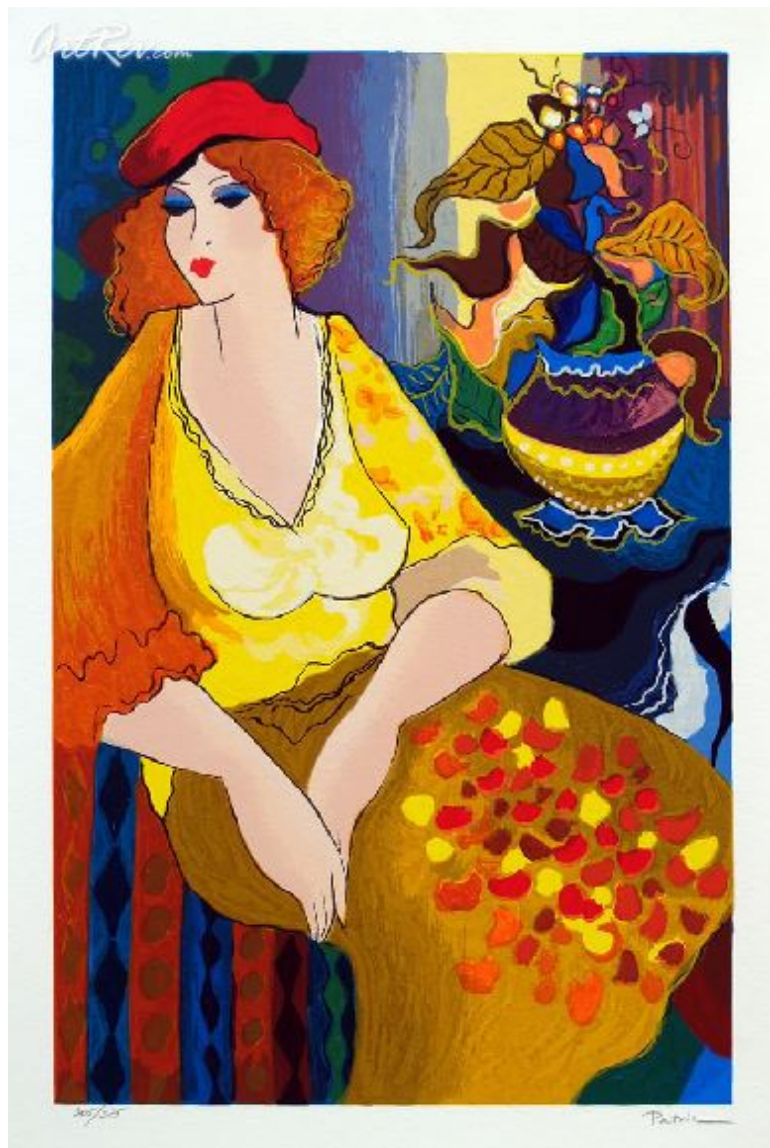


[Betty](#) by [Patricia Govezensky](#)

Serigraph on Paper - Main Subject: Figurative



Item Number

8205574597

Retail Value

\$650

ArtRev.com Price

\$390

You Save 40% Off [-\$260.00]

Dimensions (As Shown)

11W x 17H Inches

27.94W x 43.18H cm

Medium

Serigraph on Paper

Edition

- Edition Size is Unknown
- Hand-Signed 
- Numbered 

Custom Framing

- Design-it-yourself and Save!
- Museum-Quality Framing
- Up to 50% off Gallery Prices



Frame Your Artwork Online & Save!

Did you know that you can custom frame this artwork to your exact taste and specifications. Spark your own creativity and frame your artwork in as little as 2 minutes in three easy steps! Our Online frame shop offers museum quality framing services at prices up to 50% off your local gallery or frame shop. [See art collection](#) .

About Patricia Govezensky

Patricia, a sensitive artist, brings to her canvas the immortal effeminate woman, combining her tender touch and simplicity with magic moments of beauty in delicate domain. She invites us to share the public intimacy of an informal French Cafe and the euphoric mystery of a woman's room. The images, which she presents, are anonymous and therefore transcend all specific consideration of time or place, which places her work in the universal setting and justifies her worldwide success.

Patricia Govezensky was born in Tel Aviv in 1961 and was raised in Jaffa, a picturesque quarter known for being the site of the oldest port in the world. Patricia was educated and raised in Israel where she studied art. At a young age, she enrolled in courses sponsored by the Tel Aviv Museum where she mastered such arts as lithography, engraving, photography and sculpture. She graduated with distinction in her art studies at the Avni Institute and the Art Academy at Ramat Hasharon. These two institutes are of the most highly regarded and well-known art academies in Israel.

Patricia On Patricia

"For me painting is a means through which I find expression of life's joy and fulfillment, and I believe art, more than merely being a means of expression itself, also serves as a medium to help us to make peace with our lives through positive and enthusiastic sentiments and regard for the brighter aspects of our existence, escaping from protest, cynicism and selfishness."

Selected Exhibitions:

Dec. 1988 – Yosi Gol Art Gallery, Jaffa, Israel
Aug. 1990 – Omant, Art Gallery, Tel Aviv, Israel
Oct. 1990 – Art Expo, LA, California
Dec. 1990 – Burnoff Gallery, Atlanta, Georgia
June 1991 – Regency Fine Art, Atlanta, Georgia
June 1991 – Burnoff Gallery, Atlanta, Georgia
Oct. 1991 - Art Expo, LA, California
Jan. 1992 – Tias 92 – International Show, Tokyo, Japan
Sept. 1992 – Moriah Plaza, Eilat, Israel
June 1993 – King Solomon's Palace, Eilat, Israel
June 1994 – Art Spectrum Gallery, Miami, Florida
May 1995 – International Art Show, Hong Kong
May 1999 – Genesis Fine Art Gallery, Miami, Florida
1991- 2005 – Art Expo, New York

Serigraph on Paper

Screen printing or Serigraphy is a printing technique that uses a woven mesh to support an ink blocking stencil. The attached stencil forms open areas of mesh that transfer ink as a sharp-edged image onto a substrate. A roller or squeegee is moved across the screen stencil forcing or pumping ink past the threads of the woven mesh in the open areas.

Credit is generally given to the artist Andy Warhol for popularizing screen printing identified as serigraphy, in the United States. Warhol is particularly identified with his 1962 depiction of actress Marilyn Monroe screen printed in garish colors.

Copyright Notice: This document was generated on ArtRev.com on 8/19/2017 10:19:58 PM (U.S. Eastern Time Zone) - Copyright 2017 ArtRev.com, Inc. All Rights Reserved. The entire contents of this brochure is the property of ArtRev.com. You may not modify, copy, reproduce, republish, or distribute any portion of this brochure without the prior express written consent of ArtRev.com, Inc.

Authenticity & Price Match Guarantee: Shop with confidence. ArtRev.com is proud to be the first online art retailer to offer a "[lifetime authenticity guarantee](#)" with every limited edition or original work of art. Most limited edition and original artworks ship with a Certificate of Authenticity free of charge. This certificate is an official and valuable document that most insurance companies require in order to insure artworks against damage or theft. ArtRev.com will make every possible attempt to match or beat the advertised price of any major Internet competitor, art gallery, or frame shop; given that they are authorized to sell the item from the publisher or artist, and have the exact item in stock available for immediate sale.

Pricing & Availability: Due to the dynamic nature of the ArtRev.com website, prices and availability are subject to change without notice. ArtRev.com is not responsible for any pricing errors.