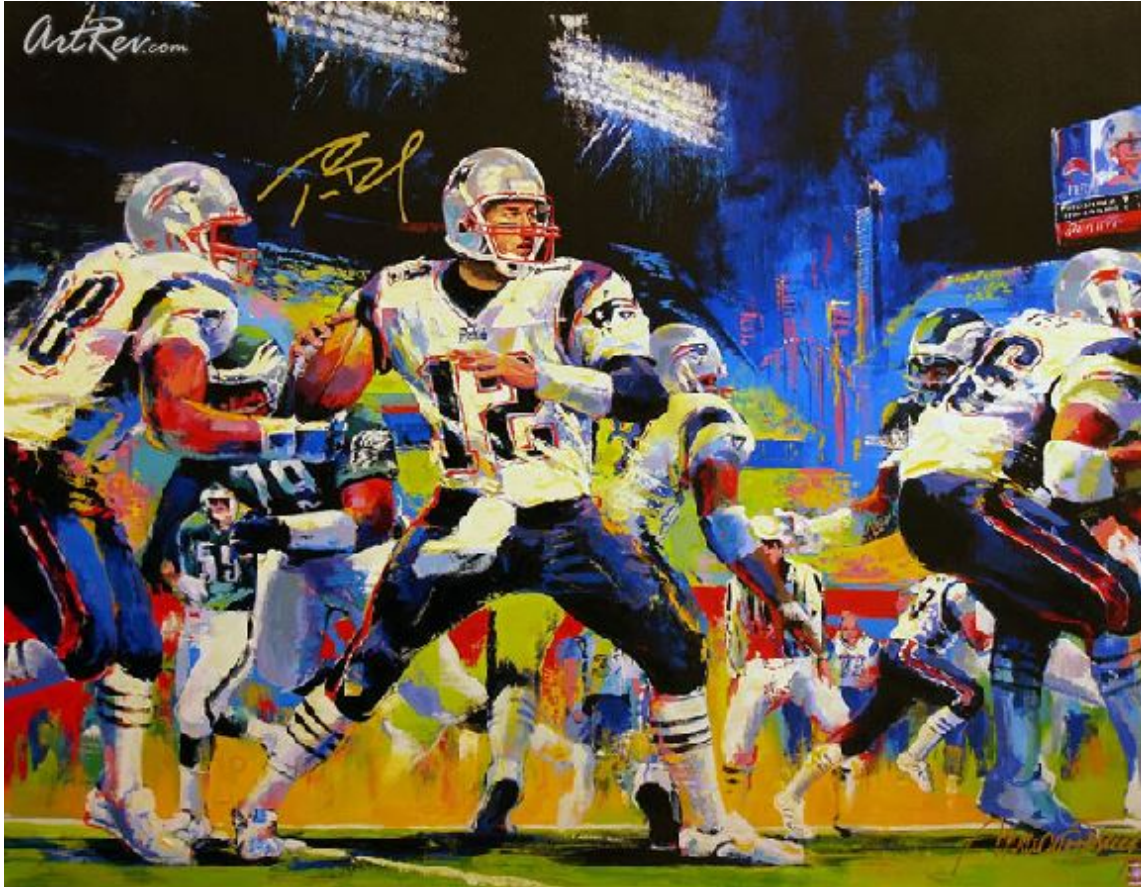


[Tom Brady](#) by [Malcolm Farley](#)
Giclee on Canvas - Main Subject: Sports





Item Number
8140973951

Retail Value
\$2,400

ArtRev.com Price
\$1,900
You Save 21% Off [-\$500.00]

Dimensions (As Shown)
38W x 30H Inches
96.52W x 76.2H cm

Medium
Giclee on Canvas

Edition
- Limited Edition of 39
- Hand-Signed 
- Numbered 

Custom Framing

- Design-it-yourself and Save!
- Museum-Quality Framing
- Up to 50% off Gallery Prices



Frame Your Artwork Online & Save!

Did you know that you can custom frame this artwork to your exact taste and specifications. Spark your own creativity and frame your artwork in as little as 2 minutes in three easy steps! Our Online frame shop offers museum quality framing services at prices up to 50% off your local gallery or frame shop. [See art collection](#) .

About Malcolm Farley

Internationally acclaimed artist Malcolm Farley is renowned for his visions of color and unique ability to capture the moment, the action, and the spirit of the event. In his distinctive painting style, Malcolm blends bold strokes and vibrant colors with the drama of some of the world's most memorable moments.

Malcolm started painting at the age of eight. Particularly fascinated with the energetic drive and aura of athletes, Malcolm an "all-everything athlete" himself grew up painting the world's greatest baseball, tennis, football, and hockey stars.

In his formative years, he travelled the world with his family, gaining cultural perspective while "putting in time" during his junior

high years 9500 feet in Northern India and other global ports. As a scholarship athlete, he learned to combine his athletic talents and passion as a jazz saxophonist with art to obtain his bachelor of Fine Arts from Metropolitan State College in Denver. After receiving various collegiate awards and being introduced into his college's Hall of Fame, Malcolm chose the path of commercial artist, becoming a connoisseur of many styles. It was in this period that he experimented with numerous mediums, arriving at his intoxicating palette and imagery. Today, his reputation as one of the true modern master painters, he holds company with just a handful. He is frequently interviewed in print and on television as "America's Premiere Sports and Entertainment Artist", a title that is enhanced by his warm personality and visionary outlook on life.

His numerous successes have included various Olympics, Academy Award festivities and an ongoing presence in Las Vegas at Caesars Palace. In the last five years alone Malcolm has painted live at the US Open, Super Bowls, The World Series, PGA Events, Staley Cups Championships, and the All-Star games for the National Basketball Association. In addition, he has painted live on stage for the likes of Mikhail Gorbachev and for musicians such as B.B. King, Tim McGraw and Faith Hill, David Sanborn, and Carlos Santana, and was commissioned to paint the Sopranos Cast party. He has created marine and wildlife paintings for distinguished museums and aquariums. This World Class Artist is also a well-known philanthropist who has created memorable art and tile walls for Children's foundations, hospitals, sporting event centers and libraries across the country. Since his talent is so diverse and unique, Malcolm Farley is also the most sought-after modern day artist to be booked into live painting performances for CBS, NBC, ABC, Fox Sports, The Fox and Friends Morning Show, ESPN, Cold Pizza, and the USA Network.

Malcolm's zest for life and ability to live in the moment is what gives him his passion to paint. "Everyday there will always be an image that is embedded into the consciousness of society that makes us proud, wowed, or make us want to stand up and cheer. I will always be driven to bring that moment in time to life, and I will always give thanks for being able to do so."

Giclee on Canvas

Giclee [zhee-clay] is a French term meaning a 'squirt or spray of ink'. This process utilizes sophisticated printing techniques whereby an industrial 8-Color to 12-Color inkjet printer sprays a staggering four million droplets of ink per second onto archival fine art paper or canvas. Requiring highly sophisticated printers and special pigment inks for an extremely wide color gamut, this blend of fine art and state-of-the-art technology produces exceptional fine art prints. Giclee prints are usually coated with a high quality gloss or varnish to minimize abrasion and increase resistance to image fading. Additionally, protective coatings protect expensive prints against moisture.

Giclee prints render deep, saturated colors and retain minute detail, subtle tints and blends. The quality of the giclee print rivals traditional silver-halide and gelatin printing processes and is commonly found in museums, art galleries, and photographic galleries.

The giclee printing process provides better color accuracy than other means of reproduction. The prints may be hand embellished by the artist using paint, ink and gold foil stamping for a mixed media effect. Giclee prints are sometimes mistakenly referred to as Iris prints, which are 4-Color ink-jet prints from a printer pioneered in the late 1970s by Iris Graphics.

Numerous examples of giclee prints can be found in New York City at the Metropolitan Museum, the Museum of Modern Art, and the Chelsea Galleries. Recent auctions of giclee prints have fetched as much as \$20,000.

Copyright Notice: This document was generated on ArtRev.com on 7/27/2017 10:39:37 AM (U.S. Eastern Time Zone) - Copyright 2017 ArtRev.com, Inc. All Rights Reserved. The entire contents of this brochure is the property of ArtRev.com. You may not modify, copy, reproduce, republish, or distribute any portion of this brochure without the prior express written consent of ArtRev.com, Inc.

Authenticity & Price Match Guarantee: Shop with confidence. ArtRev.com is proud to be the first online art retailer to offer a "[lifetime authenticity guarantee](#)" with every limited edition or original work of art. Most limited edition and original artworks ship with a Certificate of Authenticity free of charge. This certificate is an official and valuable document that most insurance companies require in order to insure artworks against damage or theft. ArtRev.com will make every possible attempt to match or beat the advertised price of any major Internet competitor, art gallery, or frame shop; given that they are authorized to sell the item from the publisher or artist, and have the exact item in stock available for immediate sale.

Pricing & Availability: Due to the dynamic nature of the ArtRev.com website, prices and availability are subject to change without notice. ArtRev.com is not responsible for any pricing errors.

