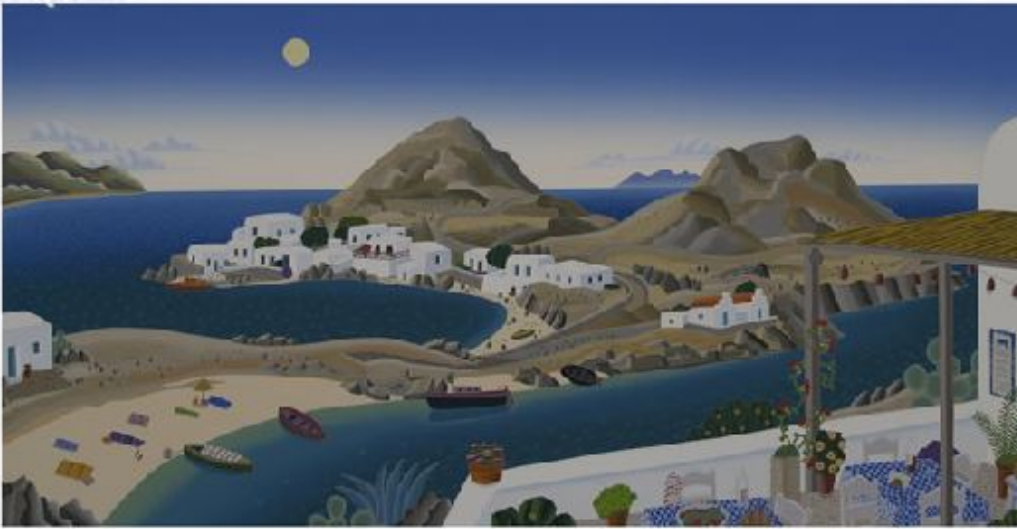


[Kalafati Panorama](#) by [Thomas McKnight](#)  
Serigraph on Paper - Main Subject: Seascape



**Item Number**

8107473616

**Retail Value**

\$2,300

**ArtRev.com Price**

\$799

You Save 65% Off [-\$1,501.00]

**Dimensions (As Shown)**

48.5W x 26H Inches


123.19W x 66.04H cm


**Medium**

Serigraph on Paper

**Edition**

- Limited Edition of 50

- Hand-Signed 

- Numbered 

**Custom Framing**

- Design-it-yourself and Save!
- Museum-Quality Framing
- Up to 50% off Gallery Prices



**Frame Your Artwork Online & Save!**

Did you know that you can custom frame this artwork to your exact taste and specifications. Spark your own creativity and frame your artwork in as little as 2 minutes in three easy steps! Our Online frame shop offers museum quality framing services at prices up to 50% off your local gallery or frame shop. [See art collection](#) .

**About Thomas McKnight**

Thomas McKnight is one of the most accomplished artists of the 20th century. His instantly recognizable images, phenomenally popular with the public, have placed him in an elite group of contemporary artists. His images have been called 'Visions of earthly happiness that are almost celestial'. McKnight's representations are idealized, yet within the reality of the initial vision. He paints a world both familiar and exotic. Be it a carnival in Venice, a sun flooded sidewalk in Greece, a cozy interior or a mythical landscape, his scenes invite the viewer to experience the unfettered joy of living.

Born in 1941 in Lawrence, Kansas, McKnight grew up on the East Coast where he received a BA from Wesleyan University and studied Art History at Columbia University. In 1988, McKnight's serigraph 'Constitution' was chosen as the official image for the U.S. Constitution's Bicentennial. And in 1994, McKnight was again honored when his image was chosen for the White House Christmas Card.

From Readers Digest to feature films to television shows, Thomas McKnight's familiar images have appeared all over making him a recognizable name in today's art culture.

## Serigraph on Paper

Screen printing or Serigraphy is a printing technique that uses a woven mesh to support an ink blocking stencil. The attached stencil forms open areas of mesh that transfer ink as a sharp-edged image onto a substrate. A roller or squeegee is moved across the screen stencil forcing or pumping ink past the threads of the woven mesh in the open areas.

Credit is generally given to the artist Andy Warhol for popularizing screen printing identified as serigraphy, in the United States. Warhol is particularly identified with his 1962 depiction of actress Marilyn Monroe screen printed in garish colors.

---

**Copyright Notice:** This document was generated on [ArtRev.com](http://ArtRev.com) on 6/23/2017 3:15:15 PM (U.S. Eastern Time Zone) - Copyright 2017 ArtRev.com, Inc. All Rights Reserved. The entire contents of this brochure is the property of ArtRev.com. You may not modify, copy, reproduce, republish, or distribute any portion of this brochure without the prior express written consent of ArtRev.com, Inc.

**Authenticity & Price Match Guarantee:** Shop with confidence. ArtRev.com is proud to be the first online art retailer to offer a "[lifetime authenticity guarantee](#)" with every limited edition or original work of art. Most limited edition and original artworks ship with a Certificate of Authenticity free of charge. This certificate is an official and valuable document that most insurance companies require in order to insure artworks against damage or theft. ArtRev.com will make every possible attempt to match or beat the advertised price of any major Internet competitor, art gallery, or frame shop; given that they are authorized to sell the item from the publisher or artist, and have the exact item in stock available for immediate sale.

**Pricing & Availability:** Due to the dynamic nature of the ArtRev.com website, prices and availability are subject to change without notice. ArtRev.com is not responsible for any pricing errors.