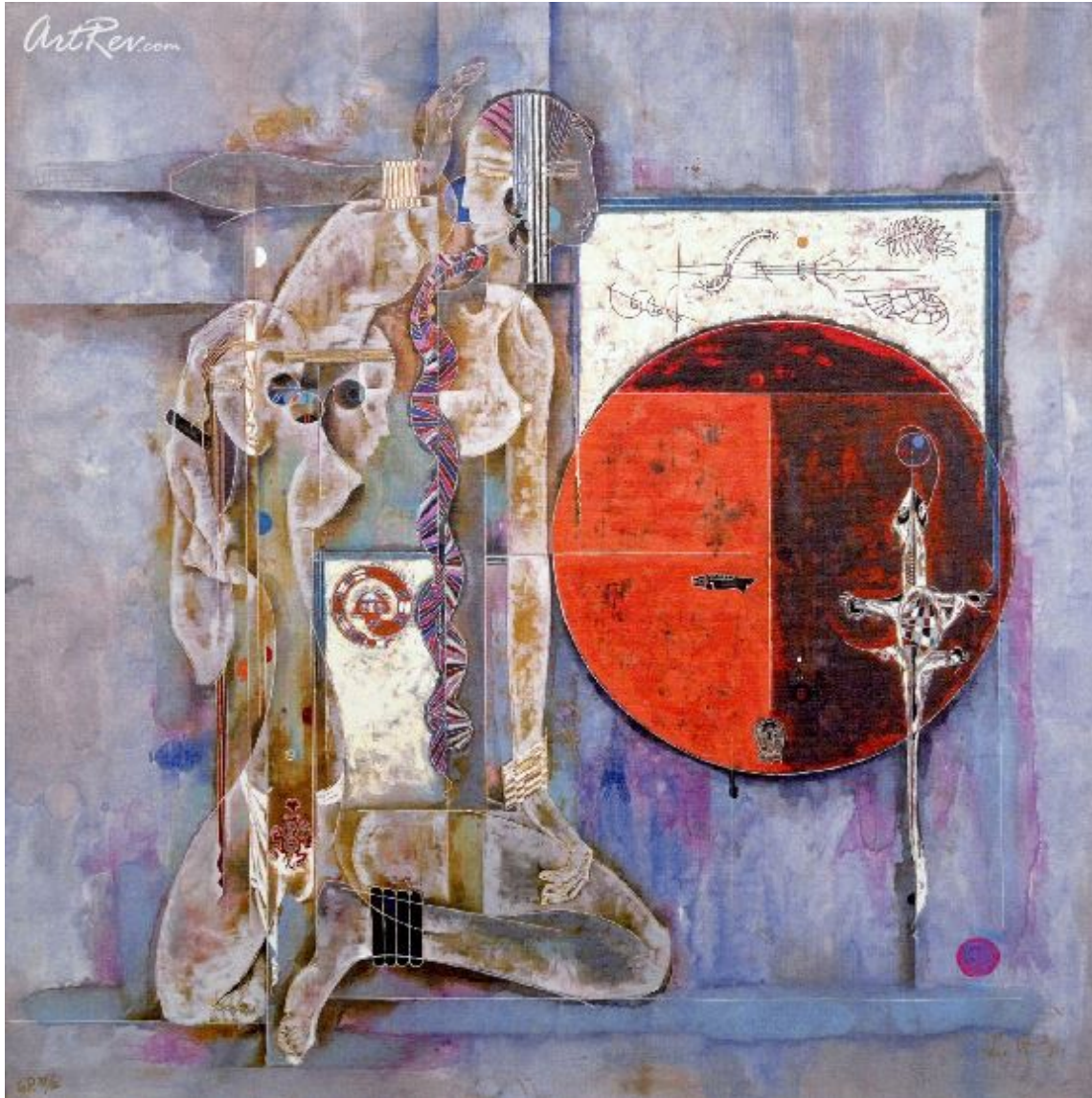


[Implications of Genesis](#) by [Lu Hong](#) (On Sale!)

Giclee on Canvas - Main Subject: Abstract



**Item Number**

7631468856

**Retail Value**

\$900

**ArtRev.com Price**

\$375

You Save 58% Off [-\$525.00]

**Dimensions (As Shown)**

24W x 24H Inches

60.96W x 60.96H cm

**Medium**

Giclee on Canvas

**Edition**

- Limited Edition of 295

- Hand-Signed

- Numbered

**Custom Framing**

- Design-it-yourself and Save!
- Museum-Quality Framing
- Up to 50% off Gallery Prices



**Frame Your Artwork Online & Save!**

Did you know that you can custom frame this artwork to your exact taste and specifications. Spark your own creativity and frame your artwork in as little as 2 minutes in three easy steps! Our Online frame shop offers museum quality framing services at prices up to 50% off your local gallery or frame shop. [See art collection](#) .

**About Lu Hong**

Many of the contemporary artists from China who have been exposed to Western influences are currently developing original techniques and styles which encompass the best of both Eastern and Western cultures. These artists, including Lu Hong, are

being recognized on an unprecedented level throughout the world for their ability to synthesize international trends and traditional Chinese art forms.

Lu Hong, a child of the revolution, was born on December 28, 1959, in the coastal city of Qin-Huang-Dao. In 1966, the Cultural Revolution began and the effects of this political upheaval were profound for Lu Hong's family. His father, who had been a professor of mathematics at the University, was reduced to doing labor along the harbor. During this time, artists were only allowed to paint in the traditional Chinese style. Artists that were influenced by the West would paint at night and would either hide their works or destroy them so that they would not be discovered by the authorities. The entire country, as well as his family, experienced a time of great struggle and sadness.

During the late 1970's, while Lu Hong was attending high school, channels of communication were reopened to include information from the outside world. It was during this time that Lu Hong's family was visited by his father's younger brother, Ting Shao Kuang.

Ting was not only a world renowned painter and teacher, but also one of the acknowledged leaders of the contemporary Chinese art movement known as the Yunnan School. Ting recognized the signs which predicted future greatness in the abstract paintings of his young nephew. He encouraged Lu Hong to consider pursuing a career in art and, to his credit, succeeded in inspiring Lu Hong to make use of his innate artistic ability.

In 1979, immediately after graduation from high school, he moved in with Ting and began to study under his tutelage. He learned everything that he could from his mentor until Ting immigrated to the United States two years later.

The education that Lu Hong received during these two years prepared him for the entrance examination to the Central Academy of Fine Arts in Beijing. In 1981, he was admitted to the Academy which is acknowledged as the most prestigious art school in China. Despite the honor of attending this school, Lu Hong quickly became frustrated by the academic restraints imposed upon him. The traditional techniques taught at the school did not meet his needs for freedom of expression. Therefore, after attending the Academy for a year and a half, he left to experiment and develop his talent on his own.

From 1983 to 1986, Lu Hong painted, studied and absorbed information from every available source open to him. He was influenced by the works of Paul Klee, Modigliani and Picasso. He

listened to the classical music of Chopin, Mueller and Wagner, and read books on poetry, Western literature and psychology. Lu Hong feels this was the period when he matured as a person and a painter. Lu Hong relates "All my life I was forced to think and act a certain way but after I left the academy, I began to develop my own style of thinking and painting."

Seeking intellectual and artistic freedom, Lu Hong moved to the United States in 1986 where he was reunited with his teacher, Ting Shao Kuang. Due to the encouragement that he received from Ting and publisher Ron Segal of Segal Fine Art, in three years, he has become one of the most acclaimed contemporary Chinese artists in America.

He thinks of his art as "a kind of language, not just a vision." He strives to convey a message, feeling, or thought in a manner which will capture the attention of his audience. If he listens to a musical composition or reads a poem which inspires him, he uses it to develop a visualization which expresses the meaning he extrapolated from that particular piece.

Another characteristic of Lu Hong's paintings is reminiscent of ancient Chinese art, American Indian art, and the work of Picasso. He cuts many of his subjects into sections, painting only the most important parts. This distortion of perspective causes a natural blending of his subjects into their surroundings further enhancing the magical quality of his works.

Lu Hong's work is exhibited in galleries throughout the United States, Canada, Europe, Asia and Australia. Future shows are scheduled for New York, San Francisco, Boston, Hawaii, Beverly Hills and Japan.

### **Giclee on Canvas**

Giclee [zhee-clay] is a French term meaning a 'squirt or spray of ink'. This process utilizes sophisticated printing techniques whereby an industrial 8-Color to 12-Color inkjet printer sprays a staggering four million droplets of ink per second onto archival fine art paper or canvas. Requiring highly sophisticated printers and special pigment inks for an extremely wide color gamut, this blend of fine art and state-of-the-art technology produces exceptional fine art prints. Giclee prints are usually coated with a high

quality gloss or varnish to minimize abrasion and increase resistance to image fading. Additionally, protective coatings protect expensive prints against moisture.

Giclee prints render deep, saturated colors and retain minute detail, subtle tints and blends. The quality of the giclee print rivals traditional silver-halide and gelatin printing processes and is commonly found in museums, art galleries, and photographic galleries.

The giclee printing process provides better color accuracy than other means of reproduction. The prints may be hand embellished by the artist using paint, ink and gold foil stamping for a mixed media effect. Giclee prints are sometimes mistakenly referred to as Iris prints, which are 4-Color ink-jet prints from a printer pioneered in the late 1970s by Iris Graphics.

Numerous examples of giclee prints can be found in New York City at the Metropolitan Museum, the Museum of Modern Art, and the Chelsea Galleries. Recent auctions of giclee prints have fetched as much as \$20,000.

---

**Copyright Notice:** This document was generated on [ArtRev.com](http://ArtRev.com) on 2/23/2018 9:37:16 PM (U.S. Eastern Time Zone) - Copyright 2018 ArtRev.com, Inc. All Rights Reserved. The entire contents of this brochure is the property of ArtRev.com. You may not modify, copy, reproduce, republish, or distribute any portion of this brochure without the prior express written consent of ArtRev.com, Inc.

**Authenticity & Price Match Guarantee:** Shop with confidence. ArtRev.com is proud to be the first online art retailer to offer a "[lifetime authenticity guarantee](#)" with every limited edition or original work of art. Most limited edition and original artworks ship with a Certificate of Authenticity free of charge. This certificate is an official and valuable document that most insurance companies require in order to insure artworks against damage or theft. ArtRev.com will make every possible attempt to match or beat the advertised price of any major Internet competitor, art gallery, or frame shop; given that they are authorized to sell the item from the publisher or artist, and have the exact item in stock available for immediate sale.

**Pricing & Availability:** Due to the dynamic nature of the ArtRev.com website, prices and availability are subject to change without notice. ArtRev.com is not responsible for any pricing errors.