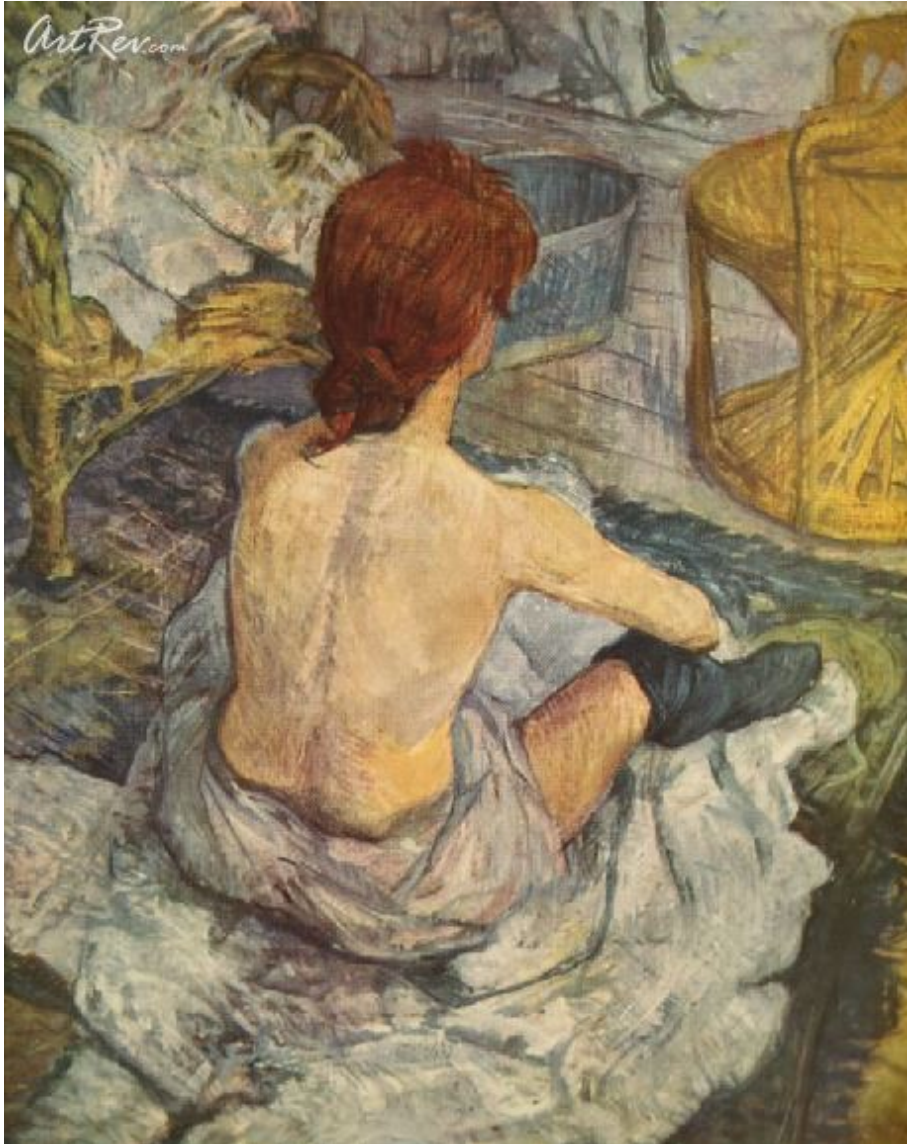


[Woman at her Toilet](#) by [Henri de Toulouse Lautrec](#)  
Original Lithographic Bookplate - Main Subject: Portrait



**Item Number**  
7579168332

**Retail Value**  
\$130

**ArtRev.com Price**  
\$75  
You Save 42% Off [-\$55.00]

**Dimensions (As Shown)**  
7.75W x 9.75H Inches  
19.68W x 24.76H cm

**Medium**  
Original Lithographic Bookplate

### Custom Framing

- Design-it-yourself and Save!
- Museum-Quality Framing
- Up to 50% off Gallery Prices



### Frame Your Artwork Online & Save!

Did you know that you can custom frame this artwork to your exact taste and specifications. Spark your own creativity and frame your artwork in as little as 2 minutes in three easy steps! Our Online frame shop offers museum quality framing services at prices up to 50% off your local gallery or frame shop. [See art collection](#) .

About Henri de Toulouse Lautrec

Henri de Toulouse-Lautrec, French postimpressionist painter, lithographer, and illustrator, who documented the bohemian nightlife of late-19th-century Paris. Toulouse-Lautrec was born in Albi into one of the oldest aristocratic families in the south of France in 1864. His father, Count Alphonse, was a notorious eccentric known for all kinds of unpredictable behavior: from washing his socks in the river (unheard of for an aristocrat!) to galloping off to a hunt wearing outlandish costumes, to simply disappearing for long stretches of time. The young Henri never became very close to him.

Henri suffered from a genetic condition that prevented his bones from healing properly. Henri was weak and often sick. By the time he was 10 he had begun to draw and paint. At 12 young Toulouse-Lautrec broke his left leg and at 14 his right leg. The bones failed to heal properly, and his legs stopped growing. He reached young adulthood with a body trunk of normal size but with abnormally short legs. During his convalescence, his mother encouraged him to paint. He subsequently studied with French academic painters L. J. F. Bonnat and Fernand Cormon.

He stayed in the Montmartre section of Paris, the center of the cabaret entertainment and bohemian life that he loved to paint. Circuses, dance halls, nightclubs, racetracks and parisian brothels all these spectacles were set down on canvas or made into lithographs. Toulouse-Lautrec was very much a part of all this activity. He would sit at a crowded nightclub table, laughing and drinking, and at the same time he would make swift sketches.

Toulouse-Lautrec preserved his impressions of these places and their celebrities in portraits and sketches of striking originality and power. Outstanding examples are *La Goulou Entering the Moulin Rouge* (1892, Musée Toulouse-Lautrec, Albi), *Jane Avril Entering the Moulin Rouge* (1892, Courtauld Gallery, London), and *Au salon de la rue des Moulins* (1894, Musée Toulouse-Lautrec).

His stunted physique earned him laughs and scorn, and kept him from experiencing many of the physical pleasures offered in Montmartre, a sorrow that he drowned in alcohol. At first it was beer and wine. Then brandy, whiskey, and the infamous absinthe found their ways into his life.

Art and alcohol were his only mistresses, and they were mistresses to which he devoted all of his time and energy. He was doing one or both almost every day of his life until he died.

Adapting the fad for Japanese style (asymmetric composition, flat areas of color) that then pervaded French art to the also burgeoning art of the picture poster, he created thousands of artworks both to memorialize his friends and to advertise their venues. Among those whose images are now a part of art history are the *Moulin Rouge* dancers Louise Weber (*La Goulue*) and Jane Avril, and the combative singer/entrepreneur Aristide Bruant.

Toulouse-Lautrec, many of whose works are in the museum that bears his name in Albi, was a prolific creator. His oeuvre includes great numbers of paintings, drawings, etchings, lithographs, and posters, as well as illustrations for various contemporary newspapers. He incorporated into his own highly individual method elements of the styles of various contemporary artists, especially French painters Edgar Degas and Paul Gauguin. Japanese art, then coming into vogue in Paris, influenced his use of sharp delineation, asymmetric composition, oblique angles, and flat areas of color. His work inspired van Gogh, Georges Seurat, and Georges Rouault.

His alcoholic dissipation, however, eventually brought on a paralytic stroke, to which he succumbed at Malromé, one of his family's estates. Since then his paintings and posters--particularly the '*Moulin Rouge*' group have been in great demand and bring high prices at auctions and art sales.

## Original Lithographic Bookplate

Sorry. No information about this medium is available.

**Authenticity & Price Match Guarantee:** Shop with confidence. ArtRev.com is proud to be the first online art retailer to offer a "[lifetime authenticity guarantee](#)" with every limited edition or original work of art. Most limited edition and original artworks ship with a Certificate of Authenticity free of charge. This certificate is an official and valuable document that most insurance companies require in order to insure artworks against damage or theft. ArtRev.com will make every possible attempt to match or beat the advertised price of any major Internet competitor, art gallery, or frame shop; given that they are authorized to sell the item from the publisher or artist, and have the exact item in stock available for immediate sale.

**Pricing & Availability:** Due to the dynamic nature of the ArtRev.com website, prices and availability are subject to change without notice. ArtRev.com is not responsible for any pricing errors.