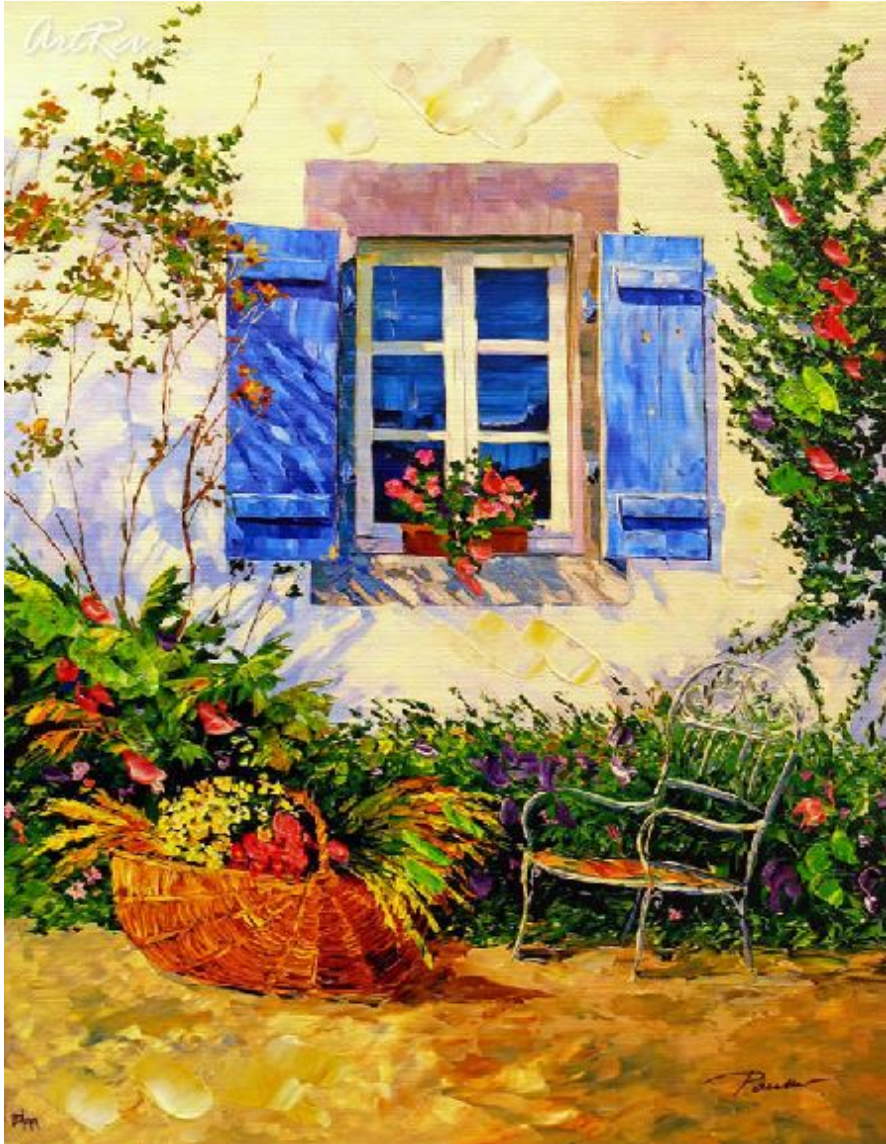


[Placid Window](#) by [Alex Pauker](#)

Giclee on Canvas - Main Subject: Country



Item Number
7372666268

Retail Value
\$350

ArtRev.com Price
\$160
You Save 54% Off [-\$190.00]

Dimensions (As Shown)
10.5W x 13.5H Inches
26.67W x 34.29H cm

Medium
Giclee on Canvas

Edition
- Limited Edition of 99
- Hand-Signed
- Numbered

Custom Framing

- Design-it-yourself and Save!
- Museum-Quality Framing
- Up to 50% off Gallery Prices



Frame Your Artwork Online & Save!

Did you know that you can custom frame this artwork to your exact taste and specifications. Spark your own creativity and frame your artwork in as little as 2 minutes in three easy steps! Our Online frame shop offers museum quality framing services at prices up to 50% off your local gallery or frame shop. [See art collection](#) .

About Alex Pauker

Alex Pauker was born in Russia in 1974. It was there that he discovered his natural talent for creating beautiful paintings of landscapes. He grew up in Russia and studied art at the Yekaterinburg College of Art. After graduating in 1990, Alex decided to travel the world looking for new inspiration for his work.

In his travels, Alex discovered the beautiful scenery of Europe and was awarded a place in a student exchange program where he earned his second art degree. During his studies in Europe, he worked as an illustrator and creative consultant at a Publishing House. He also entered and won the International Leningrad Art Contest.

Currently, Alex Pauker lives in Tel-Aviv, Israel and paints there in his studio. He continues to travel the world gaining inspiration for his majestic landscape paintings as well as exhibiting at museums and galleries abroad. His works can be found in many private collections in Israel, Europe and the United States.

Giclee on Canvas

Giclee [zhee-clay] is a French term meaning a 'squirt or spray of ink'. This process utilizes sophisticated printing techniques whereby an industrial 8-Color to 12-Color inkjet printer sprays a staggering four million droplets of ink per second onto archival fine art paper or canvas. Requiring highly sophisticated printers and special pigment inks for an extremely wide color gamut, this blend of fine art and state-of-the-art technology produces exceptional fine art prints. Giclee prints are usually coated with a high quality gloss or varnish to minimize abrasion and increase resistance to image fading. Additionally, protective coatings protect expensive prints against moisture.

Giclee prints render deep, saturated colors and retain minute detail, subtle tints and blends. The quality of the giclee print rivals traditional silver-halide and gelatin printing processes and is commonly found in museums, art galleries, and photographic galleries.

The giclee printing process provides better color accuracy than other means of reproduction. The prints may be hand embellished by the artist using paint, ink and gold foil stamping for a mixed media effect. Giclee prints are sometimes mistakenly referred to as Iris prints, which are 4-Color ink-jet prints from a printer pioneered in the late 1970s by Iris Graphics.

Numerous examples of giclee prints can be found in New York City at the Metropolitan Museum, the Museum of Modern Art, and the Chelsea Galleries. Recent auctions of giclee prints have fetched as much as \$20,000.

Copyright Notice: This document was generated on ArtRev.com on 4/25/2018 12:52:11 AM (U.S. Eastern Time Zone) - Copyright 2018 ArtRev.com, Inc. All Rights Reserved. The entire contents of this brochure is the property of ArtRev.com. You may not modify, copy, reproduce, republish, or distribute any portion of this brochure without the prior express written consent of ArtRev.com, Inc.

Authenticity & Price Match Guarantee: Shop with confidence. ArtRev.com is proud to be the first online art retailer to offer a "[lifetime authenticity guarantee](#)" with every limited edition or original work of art. Most limited edition and original artworks ship with a Certificate of Authenticity free of charge. This certificate is an official and valuable document that most insurance companies require in order to insure artworks against damage or theft. ArtRev.com will make every possible attempt to match or beat the advertised price of any major Internet competitor, art gallery, or frame shop; given that they are authorized to sell the item from the publisher or artist, and have the exact item in stock available for immediate sale.

Pricing & Availability: Due to the dynamic nature of the ArtRev.com website, prices and availability are subject to change without notice. ArtRev.com is not responsible for any pricing errors.