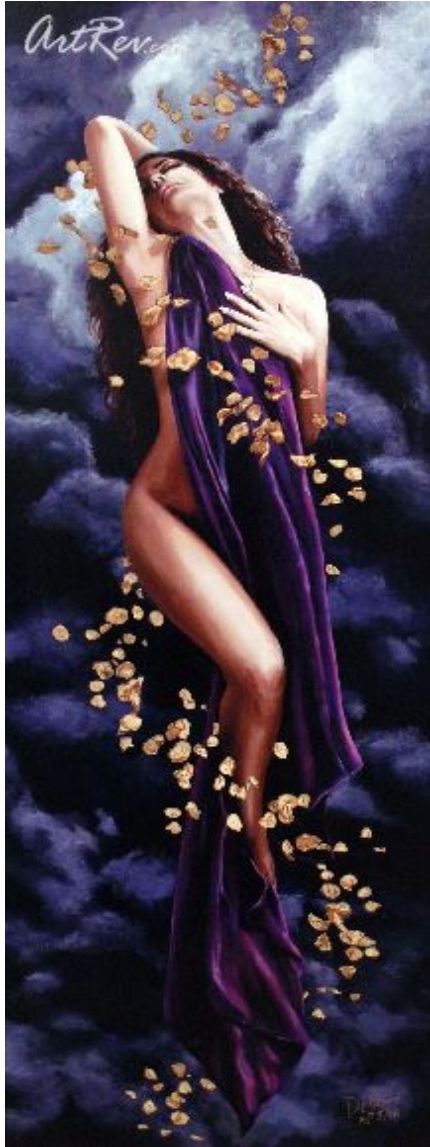


[Ascension](#) by [Chris Dellorco](#)

Giclee on Canvas - Main Subject: Nude & Sensual



Item Number

7016962711

Retail Value

\$1,700

ArtRev.com Price

\$1,600

You Save 6% Off [-\$100.00]

Dimensions (As Shown)

14W x 40H Inches


35.56W x 101.6H cm


Medium

Giclee on Canvas

Edition

- Limited Edition of 50 GP

- Hand-Signed 

- Numbered 

Custom Framing

- Design-it-yourself and Save!
- Museum-Quality Framing
- Up to 50% off Gallery Prices



Frame Your Artwork Online & Save!

Did you know that you can custom frame this artwork to your exact taste and specifications. Spark your own creativity and frame your artwork in as little as 2 minutes in three easy steps! Our Online frame shop offers museum quality framing services at prices up to 50% off your local gallery or frame shop. [See art collection](#) .

About Chris Dellorco

Born in Los Angeles, Chris' initial interest in the interplay between art and architectural history began with a degree in Developmental Economics from U.C. Berkeley. Desiring a more creative field, he switched his focus from academics to art and went on to establish himself as one of the county's foremost illustrators. Although completely self-taught, his art career has spanned all aspects of illustration while specializing in the film industry, children's products and children's books. A true renaissance man, along with a degree in Economics and a successful art career, he has also successfully written and directed an award-winning short film, receiving international recognition.

For the past 15 years, Chris has been widely considered one of Disney's top illustrators for print advertising, specializing in Home Video packaging. His covers range from the award-winning "The Lion King", to the recent "Lilo and Stich" and everything in between. If you own one of Disney's animated titles on VHS or DVD, Chris probably did the cover.

In the entertainment field, he has illustrated numerous movie posters which include "Conan the Barbarian", "Revenge of the Nerds", "Coming to America", "The Marrying Man", "The Firm", and others. He received the Silver Medal award at The Hollywood Reporter Key Art Awards for the poster "Eating Raoul", First Place for his work on "Who Framed Roger Rabbit", Second Place for "Snow White", and Finalist for "Aladdin-Prince of Thieves". He also was a finalist for the prestigious Belding award. He has also shown his artwork for many years in the Society of Illustrators Annual West Coast Exhibit.

Dellorco's oil paintings exhibit near photo realism, yet still capture a certain level of artistic beauty and sensuality. Generally, they depict the female figure, shrouded in richly colored fabrics, while dramatically set against Old World European architecture. Often the architecture represents a historically significant European landmark, such as Versailles or the Pantheon. Each painting reveals a subtle, yet provocative story contrasting human beauty and frailty with the solidity and strength of mankind's greatest monuments.

Chris' art has been featured at the celebrity-filled Artists for Medicine annual auction at the Lladro Gallery in Beverly Hills, showing alongside such renowned artists as Basquiat, Rauschenberg, Ed Ruscha and Yoko Ono. He won a wide range of awards as both an advertising artist and fine artist, including a Lifetime Achievement Award from Artist's For A Better World.

Giclee on Canvas

Giclee [zhee-clay] is a French term meaning a 'squirt or spray of ink'. This process utilizes sophisticated printing techniques whereby an industrial 8-Color to 12-Color inkjet printer sprays a staggering four million droplets of ink per second onto archival fine art paper or canvas. Requiring highly sophisticated printers and special pigment inks for an extremely wide color gamut, this blend of fine art and state-of-the-art technology produces exceptional fine art prints. Giclee prints are usually coated with a high quality gloss or varnish to minimize abrasion and increase resistance to image fading. Additionally, protective coatings protect expensive prints against moisture.

Giclee prints render deep, saturated colors and retain minute detail, subtle tints and blends. The quality of the giclee print rivals traditional silver-halide and gelatin printing processes and is commonly found in museums, art galleries, and photographic galleries.

The giclee printing process provides better color accuracy than other means of reproduction. The prints may be hand embellished by the artist using paint, ink and gold foil stamping for a mixed media effect. Giclee prints are sometimes mistakenly referred to as Iris prints, which are 4-Color ink-jet prints from a printer pioneered in the late 1970s by Iris Graphics.

Numerous examples of giclee prints can be found in New York City at the Metropolitan Museum, the Museum of Modern Art, and the Chelsea Galleries. Recent auctions of giclee prints have fetched as much as \$20,000.

Copyright Notice: This document was generated on ArtRev.com on 10/23/2017 12:32:29 AM (U.S. Eastern Time Zone) - Copyright 2017 ArtRev.com, Inc. All Rights Reserved. The entire contents of this brochure is the property of ArtRev.com. You may not modify, copy, reproduce, republish, or distribute any portion of this brochure without the prior express written consent of ArtRev.com, Inc.

Authenticity & Price Match Guarantee: Shop with confidence. ArtRev.com is proud to be the first online art retailer to offer a "[lifetime authenticity guarantee](#)" with every limited edition or original work of art. Most limited edition and original artworks ship with a Certificate of Authenticity free of charge. This certificate is an official and valuable document that most insurance companies require in order to insure artworks against damage or theft. ArtRev.com will make every possible

attempt to match or beat the advertised price of any major Internet competitor, art gallery, or frame shop; given that they are authorized to sell the item from the publisher or artist, and have the exact item in stock available for immediate sale.

Pricing & Availability: Due to the dynamic nature of the ArtRev.com website, prices and availability are subject to change without notice. ArtRev.com is not responsible for any pricing errors.