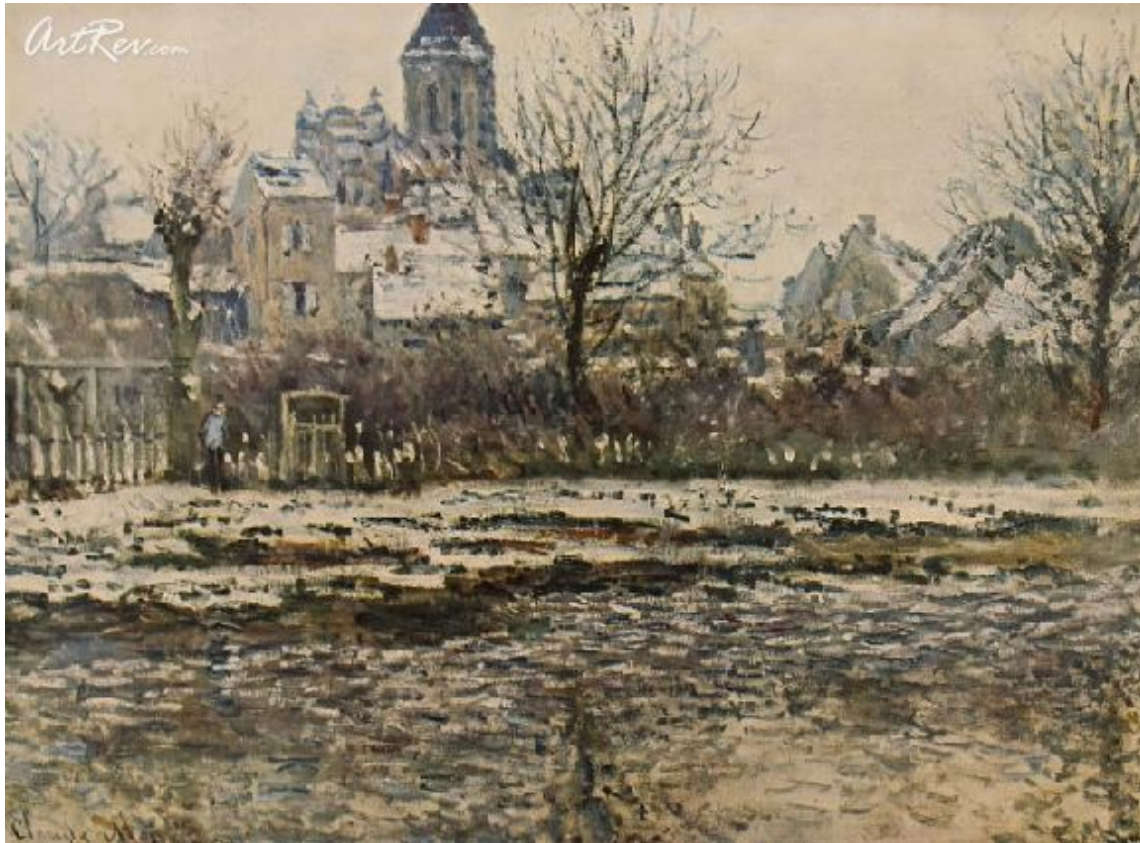


[Effect of Snow at Vetheuil](#) by [Claude Monet](#)

Original Lithographic Bookplate - Main Subject: Impressionism



Item Number

6869861240

Retail Value

\$130

ArtRev.com Price

\$75

You Save 42% Off [-\$55.00]

Dimensions (As Shown)

9W x 6.5H Inches

22.86W x 16.51H cm

Medium

Original Lithographic Bookplate

Custom Framing

- Design-it-yourself and Save!
- Museum-Quality Framing
- Up to 50% off Gallery Prices



Frame Your Artwork Online & Save!

Did you know that you can custom frame this artwork to your exact taste and specifications. Spark your own creativity and frame your artwork in as little as 2 minutes in three easy steps! Our Online frame shop offers museum quality framing services at prices up to 50% off your local gallery or frame shop. [See art collection](#) .

About Claude Monet

Claude Monet also known as Oscar-Claude Monet or Claude Oscar Monet (November 14, 1840 – December 5, 1926) was a founder of French Impressionist painting, and the most consistent and prolific practitioner of the movement's philosophy of expressing one's perceptions before nature, especially as applied to plein-air landscape painting. The term *Impressionism* is derived from the title of his painting *Impression, Sunrise* .

Monet was born on November 14, 1840 on the fifth floor of 45 rue Laffitte, in the ninth arrondissement of Paris. He was the second son of Claude-Adolphe and Louise-Justine Aubrée Monet, both of them second-generation Parisians. On May 20, 1841, he was baptized in local parish church, Notre-Dame-de-Lorette as Oscar-Claude. In 1845, his family moved to Le Havre in Normandy. His father wanted him to go into the family grocery store business, but Claude Monet wanted to become an artist. His

mother was a singer.

On the first of April, 1851 Monet entered the Le Havre secondary school of the arts. He first became known locally for his charcoal caricatures, which he would sell for ten to twenty francs. Monet also undertook his first drawing lessons from Jacques-François Ouchard, a former student of Jacques-Louis David. On the beaches of Normandy in about 1856/1857 he met fellow artist Eugène Boudin who became his mentor and taught him to use oil paints. Boudin taught Monet "en plein air" (outdoor) techniques for painting.

On 28 January 1857 his mother died. Now 16 years old he left school, and his widowed childless aunt, Marie-Jeanne Lecadre, took him into her home.

When Monet traveled to Paris to visit The Louvre, he witnessed painters copying from the old masters. Monet, having brought his paints and other tools with him, would instead go and sit by a window and paint what he saw. Monet was in Paris for several years and met several painters who would become friends and fellow impressionists. One of those friends was Édouard Manet.

In June of 1861 Monet joined the First Regiment of African Light Cavalry in Algeria for two years of a seven-year commitment, but upon his contracting typhoid his aunt Madame Lecadre intervened to get him out of the army if he agreed to complete an art course at a university. It is possible that the Dutch painter Johan Barthold Jongkind, whom Monet knew, may have prompted his aunt on this matter. Disillusioned with the traditional art taught at universities, in 1862 Monet became a student of Charles Gleyre in Paris, where he met Pierre-Auguste Renoir, Frederic Bazille, and Alfred Sisley. Together they shared new approaches to art, painting the effects of light en plein air with broken color and rapid brushstrokes, in what later came to be known as Impressionism.

Monet's 1866 *Camille or The Woman in the Green Dress* (La Femme à la Robe Verte), which brought him recognition, was one of many works featuring his future wife, Camille Doncieux. Shortly thereafter Doncieux became pregnant and bore their first child, Jean. In 1868, due to financial reasons, Monet attempted suicide by throwing himself into the Seine.

During the Franco-Prussian War (1870 - 1871), Monet took refuge in England. While there he studied the works of John Constable and Joseph Mallord William Turner, both of whose landscapes would serve to inspire Monet's innovations in the study of color.

From 1871 to 1878 Monet lived at Argenteuil, a village on the Seine near Paris, and here were painted some of his best known works.

Upon returning to France, in 1872 (or 1873) he painted *Impression, Sunrise* (Impression: soleil levant) depicting a Le Havre landscape. It hung in the first Impressionist exhibition in 1874 and is now displayed in the Musée Marmottan-Monet, Paris. From the painting's title, art critic Louis Leroy coined the term "Impressionism", which he intended to be derogatory, however the Impressionists appropriated the term for themselves.

In 1870, Monet and Doncieux married and in 1873 moved into a house in Argenteuil near the Seine River. They had a son, Michel, on March 17, 1878. Madame Monet died of tuberculosis in 1879.

Alice Hoschedé decided to help Monet by bringing up his two children together with her own. They lived in Poissy. In April 1883 they moved to a house in Giverny, Eure, in Haute-Normandie, where he planted a large garden which he painted for the rest of his life. Monet and Alice Hoschedé married in 1892.

In the 1880s and 1890s, Monet began "series" paintings, in which a subject was depicted in varying light and weather conditions. His first series exhibited as such was of Haystacks, painted from different points of view and at different times of the day. Fifteen of the paintings were exhibited at the Durand-Ruel in 1891. He later produced series of paintings of Rouen Cathedral, poplars, the Houses of Parliament, mornings on the Seine, and the waterlilies on his property at Giverny.

Monet was exceptionally fond of painting controlled nature: his own garden in Giverny, with its water lilies, pond, and bridge. He also painted up and down the banks of the Seine.

Between 1883 and 1908, Monet traveled to the Mediterranean, where he painted landmarks, landscapes, and seascapes, such as Bordighera. He painted an important series of paintings in Venice, Italy, and in London he painted two important series - views

of Parliament and views of Charing Cross Bridge. His wife Alice died in 1911 and his son Jean died in 1914.

Monet died of lung cancer on December 5, 1926 at the age of 86 and is buried in the Giverny church cemetery. Monet had insisted that the occasion be simple; thus, only about fifty people attended the ceremony. His famous home and garden with its waterlily pond and bridge at Giverny are a popular draw card for tourists. In the house there are many examples of Japanese woodcut prints on the walls.

Original Lithographic Bookplate

Sorry. No information about this medium is available.

Copyright Notice: This document was generated on ArtRev.com on 11/18/2017 11:54:15 PM (U.S. Eastern Time Zone) - Copyright 2017 ArtRev.com, Inc. All Rights Reserved. The entire contents of this brochure is the property of ArtRev.com. You may not modify, copy, reproduce, republish, or distribute any portion of this brochure without the prior express written consent of ArtRev.com, Inc.

Authenticity & Price Match Guarantee: Shop with confidence. ArtRev.com is proud to be the first online art retailer to offer a "[lifetime authenticity guarantee](#)" with every limited edition or original work of art. Most limited edition and original artworks ship with a Certificate of Authenticity free of charge. This certificate is an official and valuable document that most insurance companies require in order to insure artworks against damage or theft. ArtRev.com will make every possible attempt to match or beat the advertised price of any major Internet competitor, art gallery, or frame shop; given that they are authorized to sell the item from the publisher or artist, and have the exact item in stock available for immediate sale.

Pricing & Availability: Due to the dynamic nature of the ArtRev.com website, prices and availability are subject to change without notice. ArtRev.com is not responsible for any pricing errors.