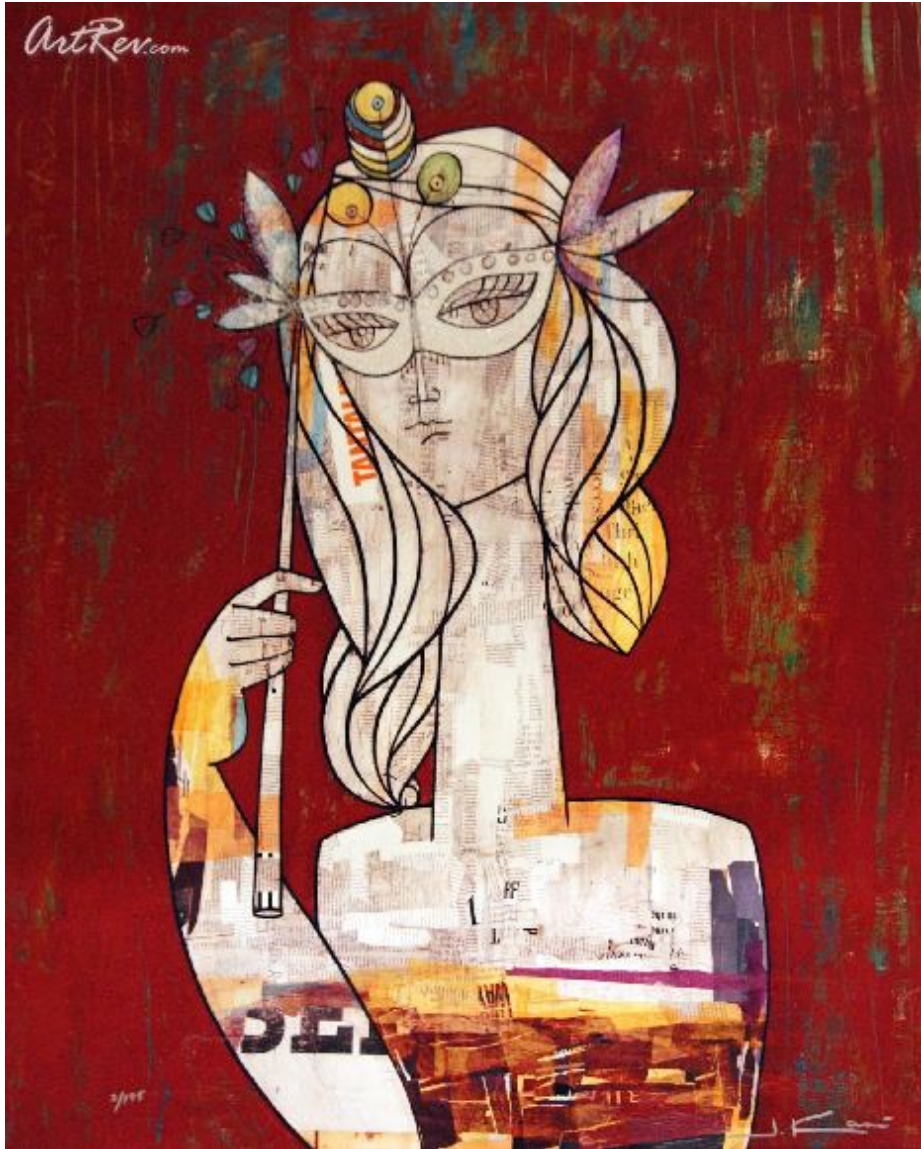


[Lily At The Masquerade](#) by [Jinous Kani](#) (On Sale!)

Hand Embellished Giclee on Canvas - Main Subject: Abstract



Item Number

6650159042

Retail Value

\$600

ArtRev.com Price

\$320

You Save 47% Off [-\$280.00]

Dimensions (As Shown)

24W x 30H x 0.75D Inches

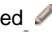
60.96W x 76.2H x 1.9D cm

Medium

Hand Embellished Giclee on Canvas

Edition

- Limited Edition of 195

- Hand-Signed 

- Numbered 

Custom Framing

- Design-it-yourself and Save!
- Museum-Quality Framing
- Up to 50% off Gallery Prices



Frame Your Artwork Online & Save!

Did you know that you can custom frame this artwork to your exact taste and specifications. Spark your own creativity and frame your artwork in as little as 2 minutes in three easy steps! Our Online frame shop offers museum quality framing services at prices up to 50% off your local gallery or frame shop. [See art collection](#) .

About Jinous Kani

Jinous Kani was born in Persia in 1979. Raised in a well-educated family in the northern part of Tehran, Kani. Her parents, who intrinsically valued and included art in their daily activities, seamlessly incorporated the artistic fundamentals into Kani's

upbringing.

But it was not until her first year of middle school that Kani harnessed the creative authority garnered from her advanced intellectual background. It was during these formative years that Kani tried her hand at sketching, a craft she immediately took to, and excelled at almost as quickly. Motivated by a close-knit group of like-minded friends, Kani and her cohorts made frequent trips to area galleries and different unique locations specifically to sketch. Impressed by their daughter's self-discipline, Kani's parents recognized in her the potential for much greater things. They encouraged Kani to continue her education at a high school with an art-based curriculum.

Through her teens, Kani continued sketching and improving her skill through Visual Arts classes. During this period, she specifically developed an interest in visual abstraction, and the imaginative vignettes and figures conjured out of this unconventional method of drawing. Eager to think beyond her preferred medium, Kani found extra time to sculpt pottery and other three-dimensional arts, pursuits that ultimately complemented and enhanced her abstract visions.

Always ready to raise the bar, Kani soon branched out into painting, after a visit to the U.S. Kani credits exposure to a different culture with her sudden interest in new ways of thinking and fresher means of artistic expression. Following this visit, Kani considered leaving Tehran for the first time. In the interim, she studied Graphic Design at Azad University in Tehran. Once she completed school, she was hired by one of Iran's leading design agencies.

Kani eventually relocated to the states, where painting became her career focus. Influenced primarily by figurative greats Egon Schiele and Gustav Klimt, Kani was able to brilliantly capture the tension between negative and positive space on canvas, a trait evident in much of her work.

This intense, inimitable approach has helped Kani harvest a strong following for someone of her youth. Stylized bodies of exaggerated proportions intertwine with powerful color and line to convey a serenity of spirit. The expressive palette and painterly gestures match that mood and intensify the humanistic motif dominant in most of Kani's catalogue. Kani sees no direct distinction between graphic design, painting or art in any form, which has only served to benefit her and increase her already widespread appeal throughout the art industry.

Hand Embellished Giclee on Canvas

Giclee [zhee-clay] is a French term meaning a 'squirt or spray of ink'. This process utilizes sophisticated printing techniques whereby an industrial 8-Color to 12-Color inkjet printer sprays a staggering four million droplets of ink per second onto archival fine art paper or canvas. Requiring highly sophisticated printers and special pigment inks for an extremely wide color gamut, this blend of fine art and state-of-the-art technology produces exceptional fine art prints. Giclee prints are usually coated with a high quality gloss or varnish to minimize abrasion and increase resistance to image fading. Additionally, protective coatings protect expensive prints against moisture.

Giclee prints render deep, saturated colors and retain minute detail, subtle tints and blends. The quality of the giclee print rivals traditional silver-halide and gelatin printing processes and is commonly found in museums, art galleries, and photographic galleries.

The giclee printing process provides better color accuracy than other means of reproduction. The prints may be hand embellished by the artist using paint, ink and gold foil stamping for a mixed media effect. Giclee prints are sometimes mistakenly referred to as Iris prints, which are 4-Color ink-jet prints from a printer pioneered in the late 1970s by Iris Graphics.

Numerous examples of giclee prints can be found in New York City at the Metropolitan Museum, the Museum of Modern Art, and the Chelsea Galleries. Recent auctions of giclee prints have fetched as much as \$20,000.

Copyright Notice: This document was generated on ArtRev.com on 12/16/2017 2:25:04 AM (U.S. Eastern Time Zone) - Copyright 2017 ArtRev.com, Inc. All Rights Reserved. The entire contents of this brochure is the property of ArtRev.com. You may not modify, copy, reproduce, republish, or distribute any portion of this brochure without the prior express written consent of ArtRev.com, Inc.

Authenticity & Price Match Guarantee: Shop with confidence. ArtRev.com is proud to be the first online art retailer to offer a "[lifetime authenticity guarantee](#)"

with every limited edition or original work of art. Most limited edition and original artworks ship with a Certificate of Authenticity free of charge. This certificate is an official and valuable document that most insurance companies require in order to insure artworks against damage or theft. ArtRev.com will make every possible attempt to match or beat the advertised price of any major Internet competitor, art gallery, or frame shop; given that they are authorized to sell the item from the publisher or artist, and have the exact item in stock available for immediate sale.

Pricing & Availability: Due to the dynamic nature of the ArtRev.com website, prices and availability are subject to change without notice. ArtRev.com is not responsible for any pricing errors.