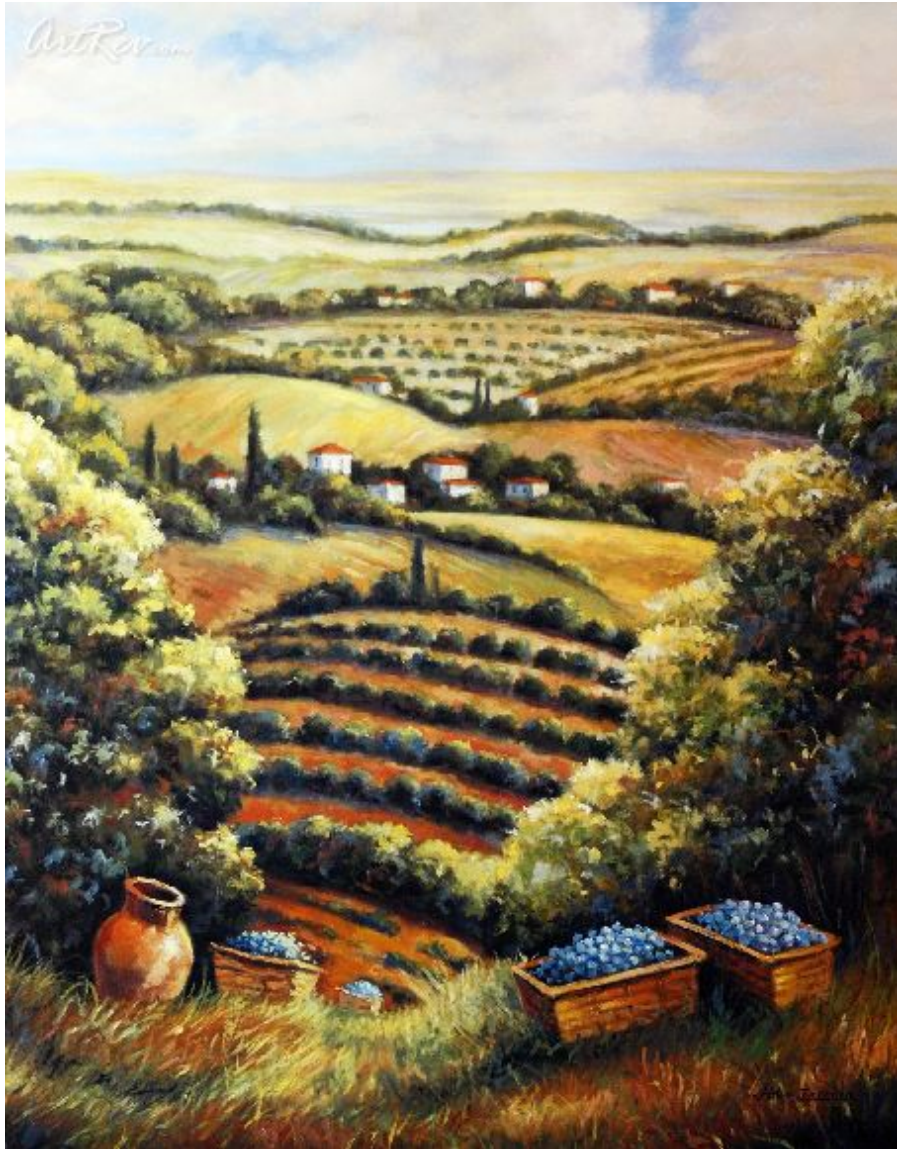


Tuscany Vista by John Zaccheo (On Sale!)

Offset Lithograph - Main Subject: Landscape



**Item Number**

6542157963

**Retail Value**

\$50

**ArtRev.com Price**

\$15

You Save 70% Off [-\$35.00]

**Dimensions (As Shown)**

22W x 28H Inches


55.88W x 71.12H cm

**Medium**

Offset Lithograph

**Edition**

- Edition Size is Unknown

- Plate-Signed 

**Custom Framing**

- Design-it-yourself and Save!
- Museum-Quality Framing
- Up to 50% off Gallery Prices



**Frame Your Artwork Online & Save!**

Did you know that you can custom frame this artwork to your exact taste and specifications. Spark your own creativity and frame your artwork in as little as 2 minutes in three easy steps! Our Online frame shop offers museum quality framing services at prices up to 50% off your local gallery or frame shop. [See art collection](#) .

**About John Zaccheo**

Internationally recognized artist John Zaccheo is an accomplished professional painter and sculptor. John s exceptional talent seeks a diverse range of expression. Whether painting in a realist, impressionist or abstract style, John is a master at using both a

brush and a palette knife. With each stroke he is creating color and form that explodes on the canvas and captives the viewer. Rich in texture his painting captures a sense of light which magnifies form and magically changes appearance. His paintings have been referred to as more lush than nature's own handy work since he employs color and form to improvise on each other thus enunciating natural harmony. His colors so smoothly interconnected seem to be a single movement.

Much admired for his technical merit, John's paintings are alive with color and luxurious detail. John finds inspiration for his work from his extensive travels (he has meandered through 60 countries) and his affinity for the natural world. Mediterranean villages and seaports, alluring flower gardens and country settings brim with energy when rendered with John's devotion to light.

John is also a renowned fine portraiture artist. His paintings reside in the libraries and museums of the following subjects: President Kennedy, President Carter, President Reagan, President Sadat of Egypt and Prime Minister Began of Israel. John also created the official painting of the original landing on the moon which was presented to astronaut, Neil Armstrong. John has also painted portraits for Gregory Peck, Anthony Quinn and Tony Bennett.

Taking a leap from the visual imagery of the real world, John's sculptures are a bold vessel for abstract form. Stark white angular and arching forms swoop in opposition yet coalesce and fuse with unity. These innovative forms were preceded by John's realist sculptures carved in marble.

Born in Kingston, New York, John earned degrees from Dutchess College (with a gold medal for outstanding achievements in fine art) and Syracuse University. After college John enlisted in the United States Navy, completing two world cruises and a tour duty of Viet Nam. After his Honorable Discharge, John continued his studies at the Art Student League in New York. He later studied with Arthur Lidov, John Pike, Robert Benny, David Lax, Joseph Hirsch, Leslie Ross and Lewis Krevolin.

Recent recipients and clients to acquire Portraits are President Obama and Rush Limbaugh.

John currently resides in Vermont surrounded by picturesque towns and mountain views that provide him with an abundance of inspiration and space to create his art.

### **Offset Lithograph**

The offset lithography process works by first transferring an image photographically to thin metal, paper, or plastic printing plates. Unlike other forms of printing, the image on the printing plate is not recessed or raised. Rollers apply oil-based ink and water to the plates. Since oil and water don't mix, the oil-based ink won't adhere to the non-image areas. Only the inked image portion is then transferred to a rubber blanket (cylinder) that then transfers the image onto the paper as it passes between it and another cylinder beneath the paper.

The term offset refers to the fact that the image isn't printed directly to the paper from the plates, but is offset or transferred to another surface that then makes contact with the paper.

---

**Copyright Notice:** This document was generated on [ArtRev.com](http://ArtRev.com) on 9/22/2017 11:16:40 AM (U.S. Eastern Time Zone) - Copyright 2017 ArtRev.com, Inc. All Rights Reserved. The entire contents of this brochure is the property of ArtRev.com. You may not modify, copy, reproduce, republish, or distribute any portion of this brochure without the prior express written consent of ArtRev.com, Inc.

**Authenticity & Price Match Guarantee:** Shop with confidence. ArtRev.com is proud to be the first online art retailer to offer a "[lifetime authenticity guarantee](#)" with every limited edition or original work of art. Most limited edition and original artworks ship with a Certificate of Authenticity free of charge. This certificate is an official and valuable document that most insurance companies require in order to insure artworks against damage or theft. ArtRev.com will make every possible attempt to match or beat the advertised price of any major Internet competitor, art gallery, or frame shop; given that they are authorized to sell the item from the publisher or artist, and have the exact item in stock available for immediate sale.

**Pricing & Availability:** Due to the dynamic nature of the ArtRev.com website, prices and availability are subject to change without notice. ArtRev.com is not responsible for any pricing errors.