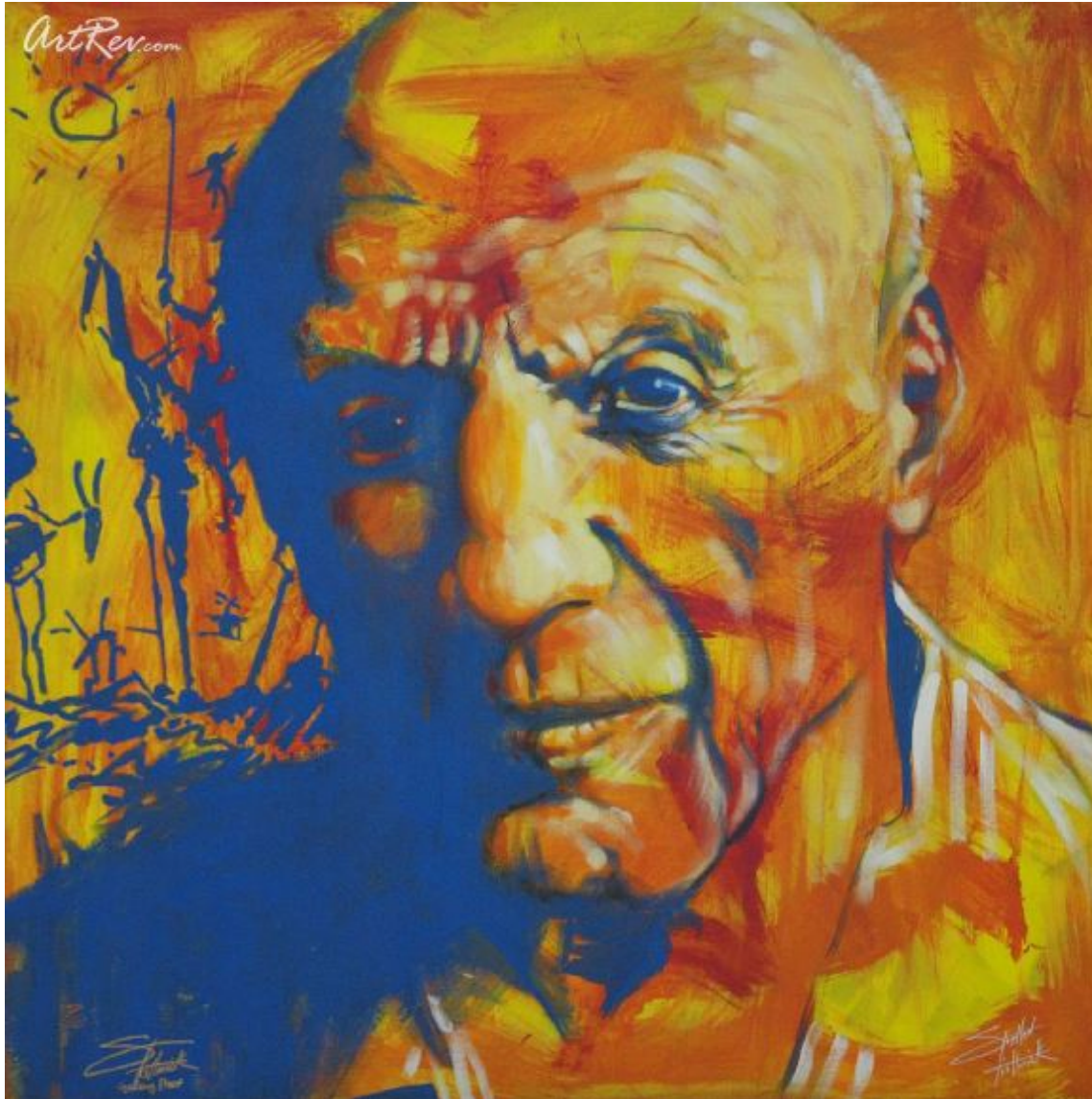


[Picasso](#) by [Stephen Fishwick](#) (On Sale!)

Giclee on Canvas - Main Subject: Portrait



Item Number

6448657027

Retail Value

\$400

ArtRev.com Price

\$185

You Save 54% Off [-\$215.00]

Dimensions (As Shown)

24W x 24H Inches


60.96W x 60.96H cm


Medium

Giclee on Canvas

Edition

- Limited Edition of 395

- Hand-Signed 

- Numbered 

Custom Framing

- Design-it-yourself and Save!
- Museum-Quality Framing
- Up to 50% off Gallery Prices



Frame Your Artwork Online & Save!

Did you know that you can custom frame this artwork to your exact taste and specifications. Spark your own creativity and frame your artwork in as little as 2 minutes in three easy steps! Our Online frame shop offers museum quality framing services at prices up to 50% off your local gallery or frame shop. [See art collection](#) .

About Stephen Fishwick

Stephen Fishwick's ability to infuse color, movement, and sound into each of his paintings creates an aesthetic style all his own. His personal mission is to constantly push himself creatively and with over 20 years of artistic experience in the field of

commercial art, it's easy to see that Stephen has become a master of his craft.

THE JOURNEY

Stephen's first accolades were earned in High School from his amazing ability to communicate raw emotions and life on canvas. With the persistence of his high school art teacher, he enrolled at the Art Institute of Pittsburgh. Less than a year later, he started working as a professional artist, drawing portraits, caricatures and illustrations.

Stephen began expanding his artistic education by studying traditional drawing and painting under Jeff Watts at the Watts Atelier of the Arts in Southern California. Influenced by a wide range of renowned painters, from Norman Rockwell to Salvador Dali, John Singer Sargent to J.C. Leyendecker, Stephen has created a style all his own. Every day I fall in love with drawing the human face and form, he says. My sketchbooks are filled with drawings of life, from people to animals.

In a career that has spanned over two decades, Stephen has earned widespread acclaim, but what makes him most proud are his philanthropic endeavors that have raised over \$1 million for different charities. He's also produced artwork for corporate America, with professional clients that include The National Football League, Microsoft, Apple, Coca-Cola, Volkswagen, Honda, Anheuser-Busch, Disney, Busch Gardens Florida, San Diego Padres and National Geographic.

THE ULTIMATE LIVE ART EXPERIENCE.

In addition to being an accomplished artist, it was in 2004 that Stephen started combining his passion for music, his love of people and animals, and his art to bring his unique brand of high-energy speed painting.

In the show known as Art Attack, A Full on Creative Assault, Stephen transforms a blank canvas into dynamic live portraits of icons such as Jimi Hendrix, Elvis and Bono choreographed to music. His energy is infectious and the audience is on its feet, clapping and dancing along with Stephen as he creates his magic on canvas with riotous strokes of color both from his brushes and his bare hands creating stunning images in a matter of minutes.

His goal is always to share with the crowd the electric euphoria that he gets from painting live on stage, and his hope is to ignite that natural creative spirit in each of us. Stephen has traveled with this stunning show rocking millions of eyes annually around the world in such locations as Japan, Beirut, Kuwait, Germany, Canada, and all over the United States.

PAINTING FOR LIFE. THE FOR LIFE COLLECTION .

Growing up on a farm in Ohio, Stephen fell in love with animals at a very early age. Drawing them and painting them, he grew to appreciate their fragility. In 2007 he produced a high-energy live art painting show featuring endangered animals. Designed to educate and creatively inspire participation in the plight of endangered animals and environments via an unforgettable explosion of art and imagination.

Since then, Stephen's vision has led to the development of the For Life Collection of fine art. Vivid canvasses of endangered animals that seem to simultaneously capture their environments and their very souls. People are often deeply moved by the images in this collection. Whether you find Stephen the Pollack of pandas or the Botticelli of Bengal Tigers, you cannot walk away from a For Life Collection painting unaffected.

Our goal is for the For Life Collection to directly impact our conservation partners with financial support and global reach in raising awareness for the plight of these beautiful animals, he says. Proceeds from paintings sold from the For Life Collection, and from the shows, go to support Stephen's wildlife conservation partners, such as the San Diego Zoo, Wild Wonders and the San Diego Humane Society. Since 2007, he has traveled the world with his conservation-focused live art show, educating audiences about the plight of endangered species from the San Diego Zoo to Downtown Disney to Japan and the Middle East.

THE FISHWICK BRAND

The Fishwick art brand continues to astonish the world. His fine art is available in numerous galleries across the country. He has been licensed by the estates of such, transcendent, icons as Elvis Presley, Jimi Hendrix, and Bob Marley to reproduce their images commercially, and his artwork have been merchandized on numerous commercial products such as posters, puzzles and apparel. His Icons collection has graced the halls of several Hard Rock Hotels. Stephen has been named a Disney Fine Artist, an

honor that will allow him to paint Disney characters and make his art available in Disney parks and galleries throughout the world. And the For Life Collection has stormed the gift shops of Zoos, Museums, and Aquariums all over the country and soon to be internationally.

The Live Art Performance shows lend to promoting, engaging, and bringing to life this artwork and allow the audience to be apart of the artistic creation. Above all, Stephen is committed to the quality, growth, and the expansion of his art to reach and touch people in a new and fresh way.

LAUNCH LIVE ART

Stephen is also the owner of Launch Live Art Entertainment an entertainment company providing live performance art and show production, as well as being a single source for booking artists for live event productions. Stephen is dedicated to mentoring and encouraging this team of skilled artists to live out their full artistic potential.

Giclee on Canvas

Giclee [zhee-clay] is a French term meaning a 'squirt or spray of ink'. This process utilizes sophisticated printing techniques whereby an industrial 8-Color to 12-Color inkjet printer sprays a staggering four million droplets of ink per second onto archival fine art paper or canvas. Requiring highly sophisticated printers and special pigment inks for an extremely wide color gamut, this blend of fine art and state-of-the-art technology produces exceptional fine art prints. Giclee prints are usually coated with a high quality gloss or varnish to minimize abrasion and increase resistance to image fading. Additionally, protective coatings protect expensive prints against moisture.

Giclee prints render deep, saturated colors and retain minute detail, subtle tints and blends. The quality of the giclee print rivals traditional silver-halide and gelatin printing processes and is commonly found in museums, art galleries, and photographic galleries.

The giclee printing process provides better color accuracy than other means of reproduction. The prints may be hand embellished by the artist using paint, ink and gold foil stamping for a mixed media effect. Giclee prints are sometimes mistakenly referred to as Iris prints, which are 4-Color ink-jet prints from a printer pioneered in the late 1970s by Iris Graphics.

Numerous examples of giclee prints can be found in New York City at the Metropolitan Museum, the Museum of Modern Art, and the Chelsea Galleries. Recent auctions of giclee prints have fetched as much as \$20,000.

Copyright Notice: This document was generated on ArtRev.com on 9/24/2017 11:42:43 AM (U.S. Eastern Time Zone) - Copyright 2017 ArtRev.com, Inc. All Rights Reserved. The entire contents of this brochure is the property of ArtRev.com. You may not modify, copy, reproduce, republish, or distribute any portion of this brochure without the prior express written consent of ArtRev.com, Inc.

Authenticity & Price Match Guarantee: Shop with confidence. ArtRev.com is proud to be the first online art retailer to offer a "[lifetime authenticity guarantee](#)" with every limited edition or original work of art. Most limited edition and original artworks ship with a Certificate of Authenticity free of charge. This certificate is an official and valuable document that most insurance companies require in order to insure artworks against damage or theft. ArtRev.com will make every possible attempt to match or beat the advertised price of any major Internet competitor, art gallery, or frame shop; given that they are authorized to sell the item from the publisher or artist, and have the exact item in stock available for immediate sale.

Pricing & Availability: Due to the dynamic nature of the ArtRev.com website, prices and availability are subject to change without notice. ArtRev.com is not responsible for any pricing errors.