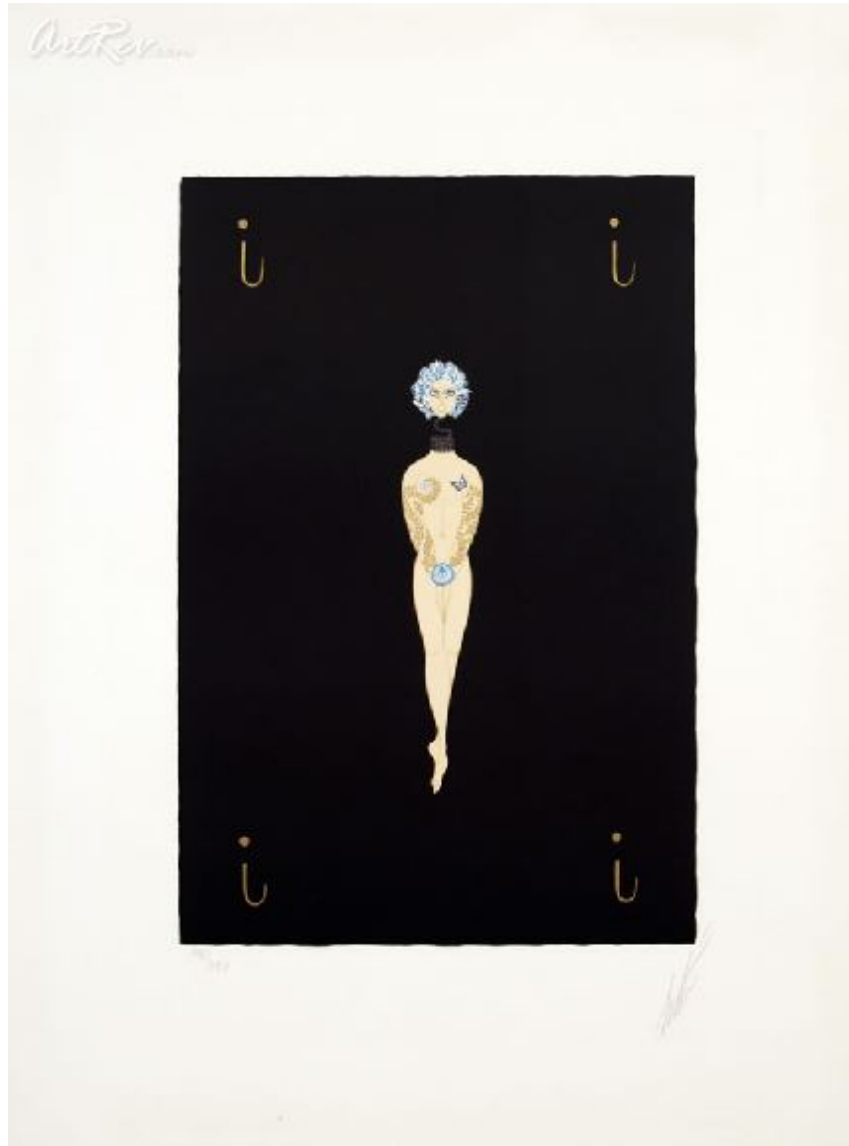


[Alphabet Suite Letter I](#) by [Erte](#)

Serigraph on Paper - Main Subject: Art Deco



Item Number

5888151422

Retail Value

\$3,500

ArtRev.com Price

\$2,500

You Save 29% Off [-\$1,000.00]

Dimensions (As Shown)

17.75W x 24H Inches


45.08W x 60.96H cm


Medium

Serigraph on Paper

Edition

- Limited Edition of 350

- Hand-Signed 

- Numbered 

Custom Framing

- Design-it-yourself and Save!
- Museum-Quality Framing
- Up to 50% off Gallery Prices



Frame Your Artwork Online & Save!

Did you know that you can custom frame this artwork to your exact taste and specifications. Spark your own creativity and frame your artwork in as little as 2 minutes in three easy steps! Our Online frame shop offers museum quality framing services at prices up to 50% off your local gallery or frame shop. [See art collection](#) .

About Erte

Romain de Tiroff was born on November 23, 1892 in St. Petersburg, Russia. His fashion career began at the age of six when his mother had a dress made from one of his first sketches. Arriving in Paris in 1912, he was armed with little more than his determination to become a successful fashion designer. In part, to ensure privacy for his family, who were still in Russia, Romain began using his initials as an acronym. RT, as pronounced in both French and Russian, became Erte.

Erte's rise to prominence in the world of international fashion began at the fashion house of Paul Poiret where he did occasional modeling of his own dress designs. As WWI began to take its effect on Europe, many of the great fashion houses shut down and Erte was forced to turn his creative efforts in other directions. In 1914, he began supplying illustrations for the American magazine "Harper's Bazaar". Their working relationship ended up lasting for 22 years. His illustrations graced not only the covers but filled the pages of one of America's best known magazines of the period.

Erte also spent a good deal of his time designing theatrical costumes, some of which were used in MGM film studio productions in Hollywood. He was especially fond of the elaborate French burlesque costumes he had become so well-known for. Erte had always kept as many of his design originals as possible and was able to hold two very successful shows with his artwork before the stock market crash in 1929, which severely damaged his finances. Until the end, Erte continued to design costumes for the theater, ballet, and opera.

The Art Deco style for which Erte is credited as being the originator, saw a resurgence of popularity in the mid-sixties when Paris exhibited his "Formes Picturales", a group of painted sculptures made of various materials. A few years later, the Metropolitan Museum of Art purchased a collection of 179 works from an exhibition of Erte's works in New York. The field of limited edition graphics was essentially created by Erte, and continues to be popular to this day. At the age of 88, Erte began to work with bronze sculpture, again achieving success with another art form. He became a legend during his own lifetime, and a truly prominent figure in the progression of art and fashion.

Serigraph on Paper

Screen printing or Serigraphy is a printing technique that uses a woven mesh to support an ink blocking stencil. The attached stencil forms open areas of mesh that transfer ink as a sharp-edged image onto a substrate. A roller or squeegee is moved across the screen stencil forcing or pumping ink past the threads of the woven mesh in the open areas.

Credit is generally given to the artist Andy Warhol for popularizing screen printing identified as serigraphy, in the United States. Warhol is particularly identified with his 1962 depiction of actress Marilyn Monroe screen printed in garish colors.

Copyright Notice: This document was generated on ArtRev.com on 10/24/2017 12:00:59 AM (U.S. Eastern Time Zone) - Copyright 2017 ArtRev.com, Inc. All Rights Reserved. The entire contents of this brochure is the property of ArtRev.com. You may not modify, copy, reproduce, republish, or distribute any portion of this brochure without the prior express written consent of ArtRev.com, Inc.

Authenticity & Price Match Guarantee: Shop with confidence. ArtRev.com is proud to be the first online art retailer to offer a "[lifetime authenticity guarantee](#)" with every limited edition or original work of art. Most limited edition and original artworks ship with a Certificate of Authenticity free of charge. This certificate is an official and valuable document that most insurance companies require in order to insure artworks against damage or theft. ArtRev.com will make every possible attempt to match or beat the advertised price of any major Internet competitor, art gallery, or frame shop; given that they are authorized to sell the item from the publisher or artist, and have the exact item in stock available for immediate sale.

Pricing & Availability: Due to the dynamic nature of the ArtRev.com website, prices and availability are subject to change without notice. ArtRev.com is not responsible for any pricing errors.