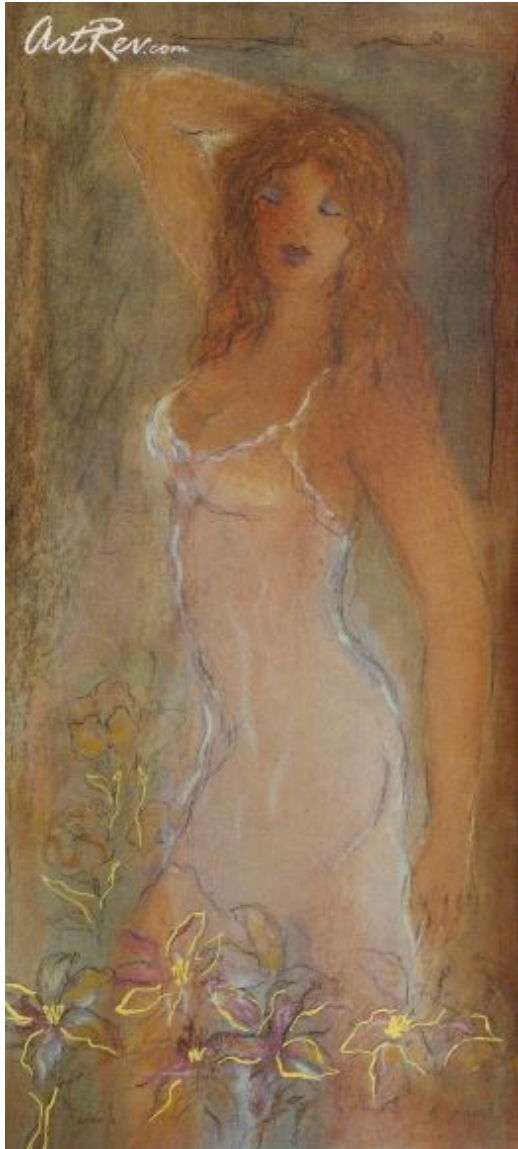


[Heavenly Morning](#) by [Batia Magal](#) (On Sale!)

Serigraph on Paper - Main Subject: People



Item Number

5773018348

Retail Value

\$75

ArtRev.com Price

\$30

You Save 60% Off [-\$45.00]

Dimensions (As Shown)

12W x 26H Inches


30.48W x 66.04H cm

Medium

Serigraph on Paper

Edition

- Limited Edition of 750

- Hand-Signed 

- Numbered 

Custom Framing

- Design-it-yourself and Save!
- Museum-Quality Framing
- Up to 50% off Gallery Prices



Frame Your Artwork Online & Save!

Did you know that you can custom frame this artwork to your exact taste and specifications. Spark your own creativity and frame your artwork in as little as 2 minutes in three easy steps! Our Online frame shop offers museum quality framing services at prices up to 50% off your local gallery or frame shop. [See art collection](#) .

About Batia Magal

Batia Magal was born in Israel in 1953. From childhood onwards, she displayed a marked talent for drawing and an all-embracing interest in art. It is therefore not surprising that she was accepted as a student at the Avni Art Institute, where she

came under the influence of such well-known artists as Streichman and Wexler, just to name a few.

Her work seems to have developed along various lines, all of which converged and fused into a very personal and feminine statement. The basic calligraphic drawing of the female figure or flower-filled vase is the centerpiece which forms the structural base of the work, to which the brilliant washes of lively colors act as a counterpoint, with the deeper and warmer hues evoking the luminosity of medieval stained-glass windows.

More recently, yet another intriguing factor has been added by the introduction of fabric textures and prints of a seemingly unconnected nature, forming collages in which the three elements of drawing, color and print or fabric texture, maintain a balance which tends to emphasize the works' structural composition.

Serigraph on Paper

Screen printing or Serigraphy is a printing technique that uses a woven mesh to support an ink blocking stencil. The attached stencil forms open areas of mesh that transfer ink as a sharp-edged image onto a substrate. A roller or squeegee is moved across the screen stencil forcing or pumping ink past the threads of the woven mesh in the open areas.

Credit is generally given to the artist Andy Warhol for popularizing screen printing identified as serigraphy, in the United States. Warhol is particularly identified with his 1962 depiction of actress Marilyn Monroe screen printed in garish colors.

Copyright Notice: This document was generated on ArtRev.com on 4/26/2018 9:12:58 PM (U.S. Eastern Time Zone) - Copyright 2018 ArtRev.com, Inc. All Rights Reserved. The entire contents of this brochure is the property of ArtRev.com. You may not modify, copy, reproduce, republish, or distribute any portion of this brochure without the prior express written consent of ArtRev.com, Inc.

Authenticity & Price Match Guarantee: Shop with confidence. ArtRev.com is proud to be the first online art retailer to offer a "[lifetime authenticity guarantee](#)" with every limited edition or original work of art. Most limited edition and original artworks ship with a Certificate of Authenticity free of charge. This certificate is an official and valuable document that most insurance companies require in order to insure artworks against damage or theft. ArtRev.com will make every possible attempt to match or beat the advertised price of any major Internet competitor, art gallery, or frame shop; given that they are authorized to sell the item from the publisher or artist, and have the exact item in stock available for immediate sale.

Pricing & Availability: Due to the dynamic nature of the ArtRev.com website, prices and availability are subject to change without notice. ArtRev.com is not responsible for any pricing errors.