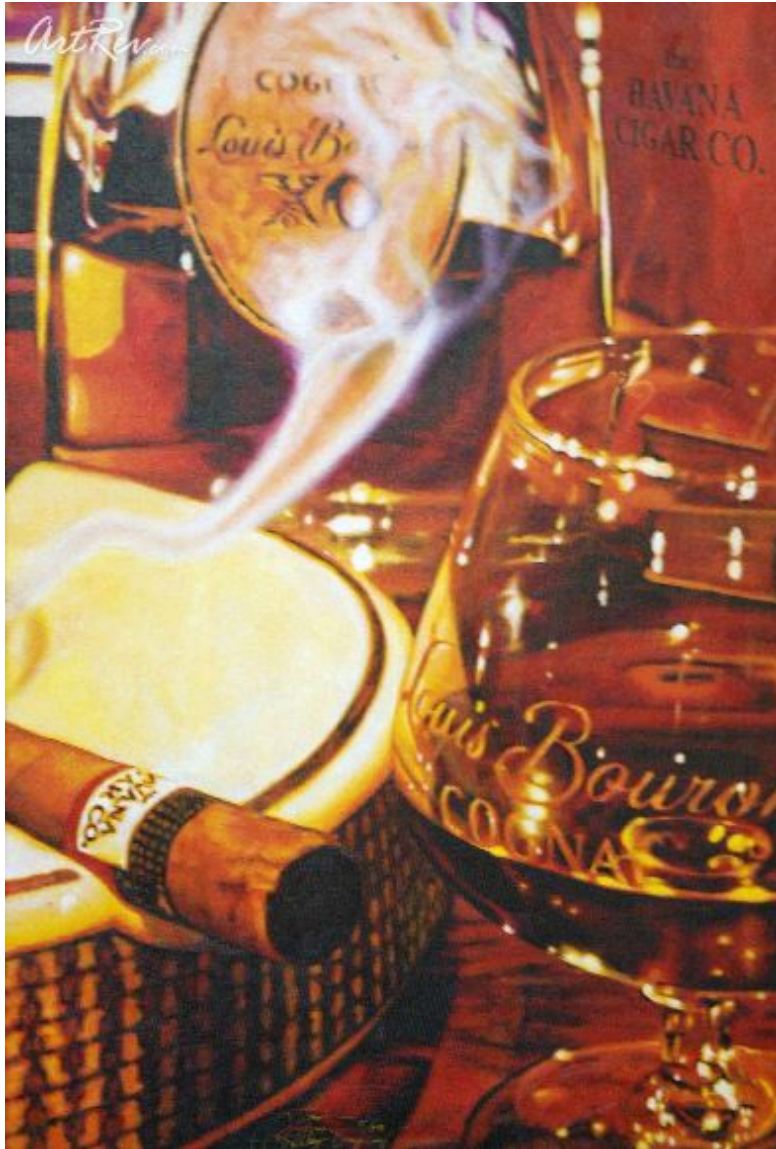


[Louis Delight](#) by [Lona](#) (On Sale!)

Giclee on Canvas - Main Subject: Still Life



Item Number

5638148923

Retail Value

\$600

ArtRev.com Price

\$375

You Save 38% Off [-\$225.00]

Dimensions (As Shown)

18W x 26.5H Inches

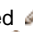
45.72W x 67.31H cm


Medium

Giclee on Canvas

Edition

- Limited Edition of 175

- Hand-Signed 

- Numbered 

Custom Framing

- Design-it-yourself and Save!
- Museum-Quality Framing
- Up to 50% off Gallery Prices



Frame Your Artwork Online & Save!

Did you know that you can custom frame this artwork to your exact taste and specifications. Spark your own creativity and frame your artwork in as little as 2 minutes in three easy steps! Our Online frame shop offers museum quality framing services at prices up to 50% off your local gallery or frame shop. [See art collection](#) .

About Lona

Born in Sacramento, California, LONA has been creating art since she was 3 years of age. She continues her artistic expression as a fine artist, as well as a professional graphic designer.

During the year 2000, LONA took a year sabbatical from her graphic design career and moved to Paris, France, to concentrate on her painting skills. She spent the year traveling, drawing, painting and developing her unique artistic style, and returned to the States with over 30 paintings.

LONA s work has been shown in New York City, Houston, San Jose, Las Vegas and Hawaii. She has collectors from all over the world.

LONA has a Bachelor of Science Degree in Graphic Design from San Jose State University and has been a professional Graphic Designer for over 20 years. She is Principal, President and Senior Designer of Fine Art & Design by LONA, located in Los Angeles, California. LONA has won many national awards for her design work, including a Benjamin Franklin Award - Best of Show, an Addy Award, and many American Graphic Design Awards.

Giclee on Canvas

Giclee [zhee-clay] is a French term meaning a 'squirt or spray of ink'. This process utilizes sophisticated printing techniques whereby an industrial 8-Color to 12-Color inkjet printer sprays a staggering four million droplets of ink per second onto archival fine art paper or canvas. Requiring highly sophisticated printers and special pigment inks for an extremely wide color gamut, this blend of fine art and state-of-the-art technology produces exceptional fine art prints. Giclee prints are usually coated with a high quality gloss or varnish to minimize abrasion and increase resistance to image fading. Additionally, protective coatings protect expensive prints against moisture.

Giclee prints render deep, saturated colors and retain minute detail, subtle tints and blends. The quality of the giclee print rivals traditional silver-halide and gelatin printing processes and is commonly found in museums, art galleries, and photographic galleries.

The giclee printing process provides better color accuracy than other means of reproduction. The prints may be hand embellished by the artist using paint, ink and gold foil stamping for a mixed media effect. Giclee prints are sometimes mistakenly referred to as Iris prints, which are 4-Color ink-jet prints from a printer pioneered in the late 1970s by Iris Graphics.

Numerous examples of giclee prints can be found in New York City at the Metropolitan Museum, the Museum of Modern Art, and the Chelsea Galleries. Recent auctions of giclee prints have fetched as much as \$20,000.

Copyright Notice: This document was generated on ArtRev.com on 11/24/2017 6:25:46 AM (U.S. Eastern Time Zone) - Copyright 2017 ArtRev.com, Inc. All Rights Reserved. The entire contents of this brochure is the property of ArtRev.com. You may not modify, copy, reproduce, republish, or distribute any portion of this brochure without the prior express written consent of ArtRev.com, Inc.

Authenticity & Price Match Guarantee: Shop with confidence. ArtRev.com is proud to be the first online art retailer to offer a "[lifetime authenticity guarantee](#)" with every limited edition or original work of art. Most limited edition and original artworks ship with a Certificate of Authenticity free of charge. This certificate is an official and valuable document that most insurance companies require in order to insure artworks against damage or theft. ArtRev.com will make every possible attempt to match or beat the advertised price of any major Internet competitor, art gallery, or frame shop; given that they are authorized to sell the item from the publisher or artist, and have the exact item in stock available for immediate sale.

Pricing & Availability: Due to the dynamic nature of the ArtRev.com website, prices and availability are subject to change without notice. ArtRev.com is not responsible for any pricing errors.