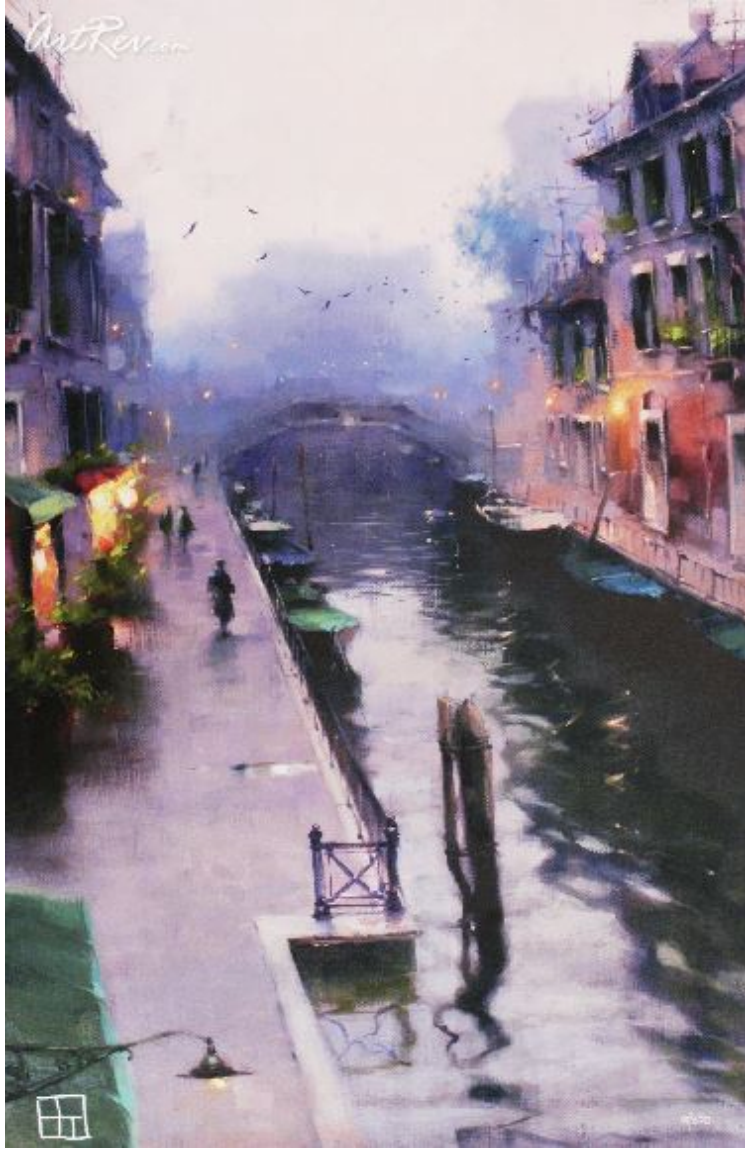


[Fog In Venice](#) by [Vakhtang](#) (On Sale!)
Hand Embellished Giclee on Canvas - Main Subject: Boats





Item Number
5531247854

Retail Value
\$500

ArtRev.com Price
\$375
You Save 25% Off [-\$125.00]

Dimensions (As Shown)
20W x 30H Inches
50.8W x 76.2H cm

Medium
Hand Embellished Giclee on Canvas

Edition
- Limited Edition of 350
- Hand-Signed 
- Numbered 

Custom Framing

- Design-it-yourself and Save!
- Museum-Quality Framing
- Up to 50% off Gallery Prices



Frame Your Artwork Online & Save!

Did you know that you can custom frame this artwork to your exact taste and specifications. Spark your own creativity and frame your artwork in as little as 2 minutes in three easy steps! Our Online frame shop offers museum quality framing services at prices up to 50% off your local gallery or frame shop. [See art collection](#) .

About Vakhtang

Vakhtang (Vah-ta'ng) was born in 1972 Tbilisi, Republic of Georgia. His grandfather, a well known Georgian artist, often took the little boy to his studio and taught him how to draw and paint. The grandfather would arrange a still life and the two of them would

paint it together, then talk about what they both saw and painted. After still life came landscape (plein air painting) and then portraits.

Since age five, Vakhtang took part in exhibitions of Children's paintings and in 1989 received a gold medal on a nation-wide juried competition of children's paintings in Tbilisi. This was followed by another honorary diploma in a Children's art competition in 1990.

Since 1998 Vakhtang was studying in the school for children gifted in art. In 1996 he was accepted to the Tbilisi Academy of Art. It was in 1999 during summer practice at the St. Petersburg Academy of Fine Art where he first saw the works of Levitan and Coro. That had a huge impact on his vision of art and helped shape him as a landscape artist. Vakhtang began to understand that he wanted to paint landscapes, but in a way that show his feelings and inner world. Landscapes are his way to give people warm feelings and positive emotions.

During his school years he continued to actively participate in exhibitions, both group and solo. Vakhtang experimented with styles and manners, tried surrealism, modern decorative styles, hyper realism, but more and more understood that what he calls "Lyrical Landscape" is his true love in art. The last two years at the academy were spent wandering the hills and valleys of his native Georgia, often with friends, sometimes alone. He was sketching hundreds of trees, hills, peasants' homes and girls milking cows. He continued to perfect his style and steady his hand.

Hand Embellished Giclee on Canvas

Giclee [zhee-clay] is a French term meaning a 'squirt or spray of ink'. This process utilizes sophisticated printing techniques whereby an industrial 8-Color to 12-Color inkjet printer sprays a staggering four million droplets of ink per second onto archival fine art paper or canvas. Requiring highly sophisticated printers and special pigment inks for an extremely wide color gamut, this blend of fine art and state-of-the-art technology produces exceptional fine art prints. Giclee prints are usually coated with a high quality gloss or varnish to minimize abrasion and increase resistance to image fading. Additionally, protective coatings protect expensive prints against moisture.

Giclee prints render deep, saturated colors and retain minute detail, subtle tints and blends. The quality of the giclee print rivals traditional silver-halide and gelatin printing processes and is commonly found in museums, art galleries, and photographic galleries.

The giclee printing process provides better color accuracy than other means of reproduction. The prints may be hand embellished by the artist using paint, ink and gold foil stamping for a mixed media effect. Giclee prints are sometimes mistakenly referred to as Iris prints, which are 4-Color ink-jet prints from a printer pioneered in the late 1970s by Iris Graphics.

Numerous examples of giclee prints can be found in New York City at the Metropolitan Museum, the Museum of Modern Art, and the Chelsea Galleries. Recent auctions of giclee prints have fetched as much as \$20,000.

Copyright Notice: This document was generated on ArtRev.com on 5/22/2018 1:56:36 PM (U.S. Eastern Time Zone) - Copyright 2018 ArtRev.com, Inc. All Rights Reserved. The entire contents of this brochure is the property of ArtRev.com. You may not modify, copy, reproduce, republish, or distribute any portion of this brochure without the prior express written consent of ArtRev.com, Inc.

Authenticity & Price Match Guarantee: Shop with confidence. ArtRev.com is proud to be the first online art retailer to offer a " [lifetime authenticity guarantee](#) " with every limited edition or original work of art. Most limited edition and original artworks ship with a Certificate of Authenticity free of charge. This certificate is an official and valuable document that most insurance companies require in order to insure artworks against damage or theft. ArtRev.com will make every possible attempt to match or beat the advertised price of any major Internet competitor, art gallery, or frame shop; given that they are authorized to sell the item from the publisher or artist, and have the exact item in stock available for immediate sale.

Pricing & Availability: Due to the dynamic nature of the ArtRev.com website, prices and availability are subject to change without notice. ArtRev.com is not responsible for any pricing errors.