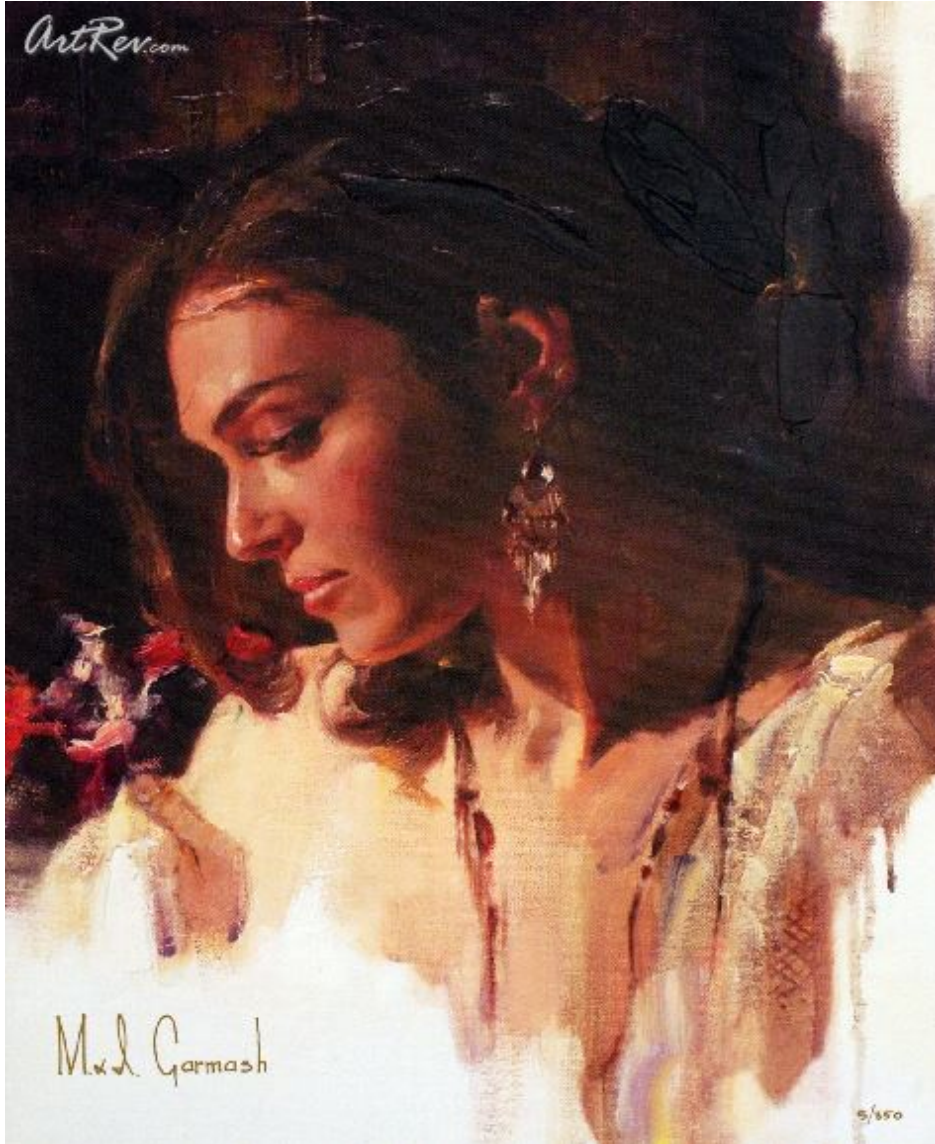


[Solemn Beauty](#) by [Michael and Inessa Garmash](#)

Hand Embellished Giclee on Canvas - Main Subject: Figurative



**Item Number**  
5415646698

**Retail Value**  
\$975

**ArtRev.com Price**  
\$650  
You Save 33% Off [-\$325.00]

**Dimensions (As Shown)**  
15W x 20H Inches  
38.1W x 50.8H cm

**Medium**  
Hand Embellished Giclee on Canvas

**Edition**  
- Limited Edition of 350  
- Hand-Signed  
- Numbered

**Custom Framing**

- Design-it-yourself and Save!
- Museum-Quality Framing
- Up to 50% off Gallery Prices



**Frame Your Artwork Online & Save!**

Did you know that you can custom frame this artwork to your exact taste and specifications. Spark your own creativity and frame your artwork in as little as 2 minutes in three easy steps! Our Online frame shop offers museum quality framing services at prices up to 50% off your local gallery or frame shop. [See art collection](#) .

**About Michael and Inessa Garmash**

Michael Garmash was born in Lugansk, Ukraine, 1969. He began painting at the age of three; by the age of six he started his formal education at the Lugansk Youth Creative Center. His works were sent by his teachers to a variety of Exhibitions in Ukraine, Russia, Czechoslovakia and Hungary. In 1987, he graduated valedictorian from the Lugansk State Fine Art College and started teaching there the following year. In 1996 he graduated from St. Petersburg Academy of Art at the head of his class.

Inessa Kitalchik was born in 1972 in Lipetsk, Russia. Since early childhood she has excelled in ballet, gymnastics and music. Inessa attended classes in all three disciplines and after graduating from music and ballet school, entered the Lugansk Fine Art School at age fifteen. At seventeen she was accepted as that year's best undergraduate to the Lugansk State Fine Art School.

Michael & Inessa met at a bus stop on campus in 1990. Inessa woke the next day to her image painted all around the city surrounding her house on the road, on the walls of buildings and the walls of her apartment staircase. Michael had spent the night painting. Although he was arrested, he was not punished; even the police can sympathize with true love!

In similar spontaneous fashion, Michael and Inessa Garmash began painting together. Several years after their marriage, Michael began a painting of their daughter for a project at school. However, their two-year old found the painting and added her own touches to the piece. Inessa, not wanting Michael to be upset, fixed the painting, packed it up and gave it to him to submit. Michael handed the painting over for review and was told it was his best work ever. He was surprised to see the new painting and immediately recognized his wife's hand.

Since then, Michael and Inessa Garmash have been a team creating beautiful paintings exhibited all over Europe.

## Hand Embellished Giclee on Canvas

Giclee [zhee-clay] is a French term meaning a 'squirt or spray of ink'. This process utilizes sophisticated printing techniques whereby an industrial 8-Color to 12-Color inkjet printer sprays a staggering four million droplets of ink per second onto archival fine art paper or canvas. Requiring highly sophisticated printers and special pigment inks for an extremely wide color gamut, this blend of fine art and state-of-the-art technology produces exceptional fine art prints. Giclee prints are usually coated with a high quality gloss or varnish to minimize abrasion and increase resistance to image fading. Additionally, protective coatings protect expensive prints against moisture.

Giclee prints render deep, saturated colors and retain minute detail, subtle tints and blends. The quality of the giclee print rivals traditional silver-halide and gelatin printing processes and is commonly found in museums, art galleries, and photographic galleries.

The giclee printing process provides better color accuracy than other means of reproduction. The prints may be hand embellished by the artist using paint, ink and gold foil stamping for a mixed media effect. Giclee prints are sometimes mistakenly referred to as Iris prints, which are 4-Color ink-jet prints from a printer pioneered in the late 1970s by Iris Graphics.

Numerous examples of giclee prints can be found in New York City at the Metropolitan Museum, the Museum of Modern Art, and the Chelsea Galleries. Recent auctions of giclee prints have fetched as much as \$20,000.

---

**Copyright Notice:** This document was generated on [ArtRev.com](http://ArtRev.com) on 5/20/2018 11:51:43 AM (U.S. Eastern Time Zone) - Copyright 2018 ArtRev.com, Inc. All Rights Reserved. The entire contents of this brochure is the property of ArtRev.com. You may not modify, copy, reproduce, republish, or distribute any portion of this brochure without the prior express written consent of ArtRev.com, Inc.

**Authenticity & Price Match Guarantee:** Shop with confidence. ArtRev.com is proud to be the first online art retailer to offer a " [lifetime authenticity guarantee](#) " with every limited edition or original work of art. Most limited edition and original artworks ship with a Certificate of Authenticity free of charge. This certificate is an official and valuable document that most insurance companies require in order to insure artworks against damage or theft. ArtRev.com will make every possible attempt to match or beat the advertised price of any major Internet competitor, art gallery, or frame shop; given that they are authorized to sell the item from the publisher or artist, and have the exact item in stock available for immediate sale.

**Pricing & Availability:** Due to the dynamic nature of the ArtRev.com website, prices and availability are subject to change without notice. ArtRev.com is not

responsible for any pricing errors.