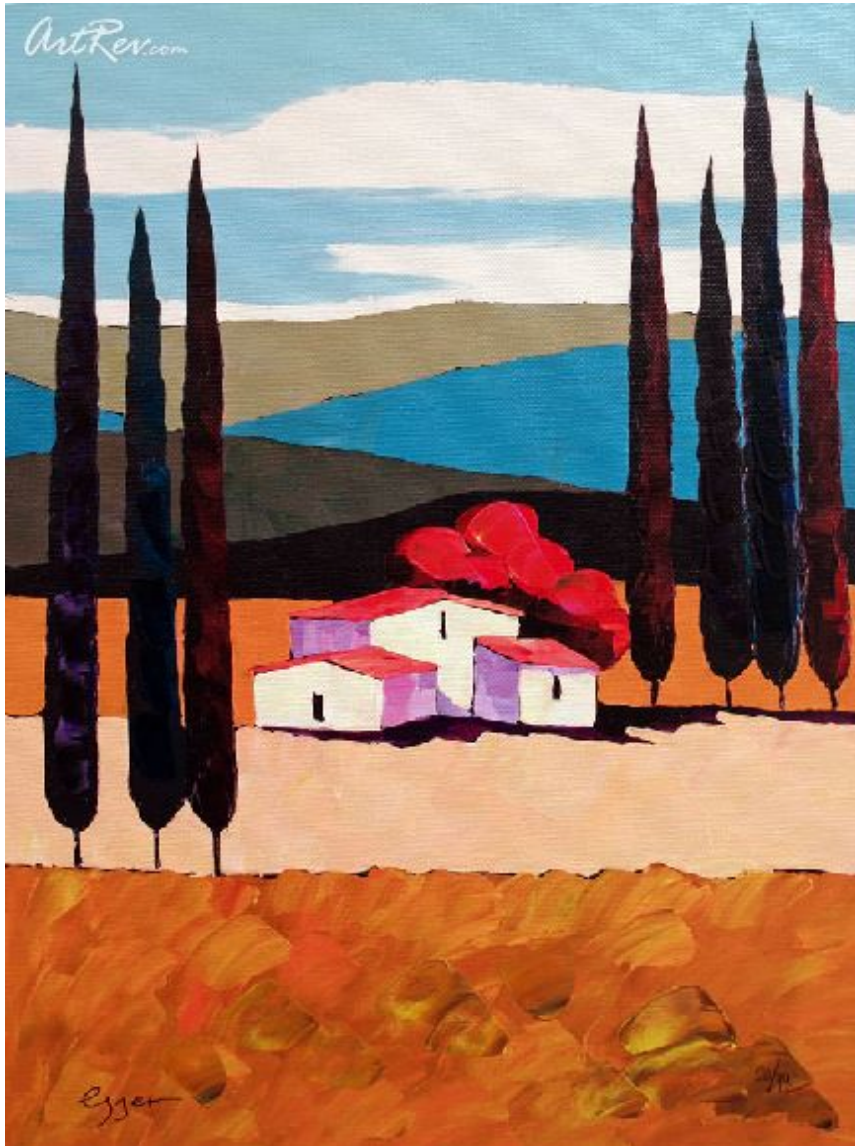


[Brilliance](#) by [Sveta Esser](#)

Giclee on Canvas - Main Subject: Landscape



Item Number

5249845040

Retail Value

\$350

ArtRev.com Price

\$250

You Save 29% Off [-\$100.00]

Dimensions (As Shown)

10W x 14.5H Inches

25.4W x 36.83H cm


Medium

Giclee on Canvas

Edition

- Limited Edition of 99

- Hand-Signed 

- Numbered 

Custom Framing

- Design-it-yourself and Save!
- Museum-Quality Framing
- Up to 50% off Gallery Prices



Frame Your Artwork Online & Save!

Did you know that you can custom frame this artwork to your exact taste and specifications. Spark your own creativity and frame your artwork in as little as 2 minutes in three easy steps! Our Online frame shop offers museum quality framing services at prices up to 50% off your local gallery or frame shop. [See art collection](#) .

About Sveta Esser

A mountain is not just a mountain when seen through the stylized gaze of Sveta Esser. A hillside, a house, the most ordinary things in the world take on a magical, ethereal, quality that cannot be duplicated. Embracing Esser's art is like stepping into another world, where, thankfully, someone has already opened the door for us.



Sveta Esser was born in Russia in 1975. At an early age she discovered her natural talent for creating beautiful paintings of landscapes. She grew up in Russia and studied art at the Yekaterinburg College of Art where she earned her first art degree.

After graduating, Esser decided to travel the world looking for new inspiration for her work. In her travels, Esser discovered the beautiful scenery of Europe and there she enrolled in a student exchange program. She remained there for several years until she earned her second art degree. During her studies in Europe, she gained experience working as an illustrator and a creative consultant at a Publishing House.

Currently, Sveta Esser lives in Israel where she works as an artist in her studio in Haifa. She continues to travel the world gaining inspiration for her majestic landscape paintings as well as exhibiting at museums and galleries abroad. Her works can be found in many private collections in Israel, Europe and the United States.

Giclee on Canvas

Giclee [zhee-clay] is a French term meaning a 'squirt or spray of ink'. This process utilizes sophisticated printing techniques whereby an industrial 8-Color to 12-Color inkjet printer sprays a staggering four million droplets of ink per second onto archival fine art paper or canvas. Requiring highly sophisticated printers and special pigment inks for an extremely wide color gamut, this blend of fine art and state-of-the-art technology produces exceptional fine art prints. Giclee prints are usually coated with a high quality gloss or varnish to minimize abrasion and increase resistance to image fading. Additionally, protective coatings protect expensive prints against moisture.

Giclee prints render deep, saturated colors and retain minute detail, subtle tints and blends. The quality of the giclee print rivals traditional silver-halide and gelatin printing processes and is commonly found in museums, art galleries, and photographic galleries.

The giclee printing process provides better color accuracy than other means of reproduction. The prints may be hand embellished by the artist using paint, ink and gold foil stamping for a mixed media effect. Giclee prints are sometimes mistakenly referred to as Iris prints, which are 4-Color ink-jet prints from a printer pioneered in the late 1970s by Iris Graphics.

Numerous examples of giclee prints can be found in New York City at the Metropolitan Museum, the Museum of Modern Art, and the Chelsea Galleries. Recent auctions of giclee prints have fetched as much as \$20,000.

Authenticity & Price Match Guarantee: Shop with confidence. ArtRev.com is proud to be the first online art retailer to offer a "[lifetime authenticity guarantee](#)" with every limited edition or original work of art. Most limited edition and original artworks ship with a Certificate of Authenticity free of charge. This certificate is an official and valuable document that most insurance companies require in order to insure artworks against damage or theft. ArtRev.com will make every possible attempt to match or beat the advertised price of any major Internet competitor, art gallery, or frame shop; given that they are authorized to sell the item from the publisher or artist, and have the exact item in stock available for immediate sale.

Pricing & Availability: Due to the dynamic nature of the ArtRev.com website, prices and availability are subject to change without notice. ArtRev.com is not responsible for any pricing errors.