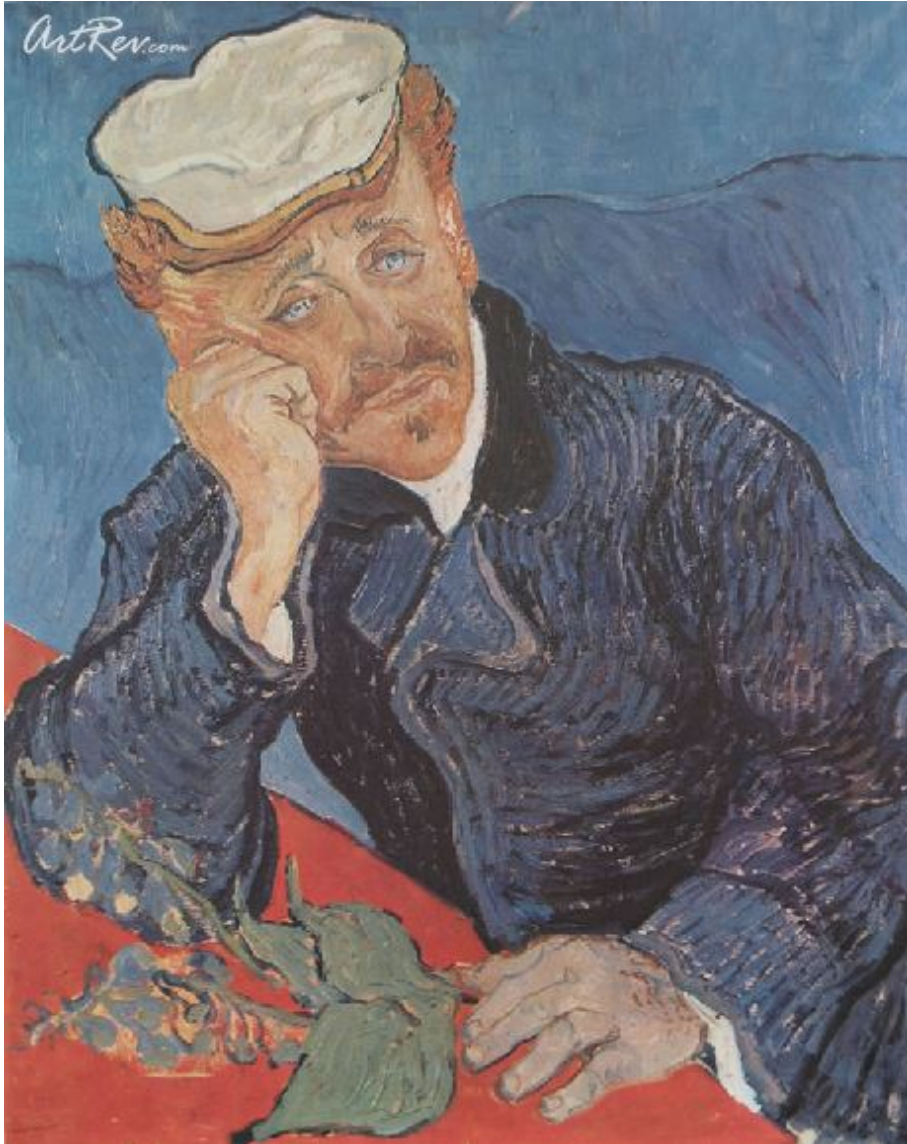


[Portrait of Doctor Gachet](#) by [Vincent van Gogh](#)  
Original Lithographic Bookplate - Main Subject: Portrait



**Item Number**  
5206744609

**Retail Value**  
\$30

**ArtRev.com Price**  
\$20  
You Save 33% Off [-\$10.00]

**Dimensions (As Shown)**  
8.25W x 10.25H Inches  
20.96W x 26.04H cm

**Medium**  
Original Lithographic Bookplate

**Custom Framing**

- Design-it-yourself and Save!
- Museum-Quality Framing
- Up to 50% off Gallery Prices



**Frame Your Artwork Online & Save!**

Did you know that you can custom frame this artwork to your exact taste and specifications. Spark your own creativity and frame your artwork in as little as 2 minutes in three easy steps! Our Online frame shop offers museum quality framing services at prices up to 50% off your local gallery or frame shop. [See art collection](#) .

**About Vincent van Gogh**

Generally considered the greatest Dutch painter after Rembrandt, van Gogh's striking and exuberant paintings were all produced during a period of only ten years. His Post-Impressionist work hauntingly conveyed through forceful color, aggressive brushwork and contoured forms, the anguish of a mental illness that eventually resulted in suicide.

After failing in both his career and love life, van Gogh turned inward, pursuing a position in the ministry. In 1880, disenchanted with priesthood, he discovered art as his new mission. The artist's earliest works were scenes of peasant life, but after a trip to Paris in 1886, where he encountered the works of the Impressionists and the Japanese prints en vogue at the time, he dramatically transformed his style from darkly colored realism to vibrant expressionism.

Inspired by the beauty of rural Arles, he moved there in 1888, but continued to struggle with nervous crisis and depression, and after one particularly severe episode, committed himself to an asylum at St. Remy. While hospitalized, he continued to paint and produced one of his most compelling works, *The Starry Night*. After his death, van Gogh's powerful compositions and expressive use of color greatly influenced Expressionism.

## Original Lithographic Bookplate

Sorry. No information about this medium is available.

---

**Copyright Notice:** This document was generated on [ArtRev.com](http://ArtRev.com) on 10/23/2017 9:33:56 AM (U.S. Eastern Time Zone) - Copyright 2017 ArtRev.com, Inc. All Rights Reserved. The entire contents of this brochure is the property of ArtRev.com. You may not modify, copy, reproduce, republish, or distribute any portion of this brochure without the prior express written consent of ArtRev.com, Inc.

**Authenticity & Price Match Guarantee:** Shop with confidence. ArtRev.com is proud to be the first online art retailer to offer a "[lifetime authenticity guarantee](#)" with every limited edition or original work of art. Most limited edition and original artworks ship with a Certificate of Authenticity free of charge. This certificate is an official and valuable document that most insurance companies require in order to insure artworks against damage or theft. ArtRev.com will make every possible attempt to match or beat the advertised price of any major Internet competitor, art gallery, or frame shop; given that they are authorized to sell the item from the publisher or artist, and have the exact item in stock available for immediate sale.

**Pricing & Availability:** Due to the dynamic nature of the ArtRev.com website, prices and availability are subject to change without notice. ArtRev.com is not responsible for any pricing errors.