

Woman In Bubble by Anna Chromy (On Sale!)

Lithograph on Paper - Main Subject: Abstract

ArtRev.com

Item Number

5008842629

Retail Value

\$120

ArtRev.com Price

\$45

You Save 62% Off [-\$75.00]

Dimensions (As Shown)

17.5W x 22H Inches


44.45W x 55.88H cm


Medium

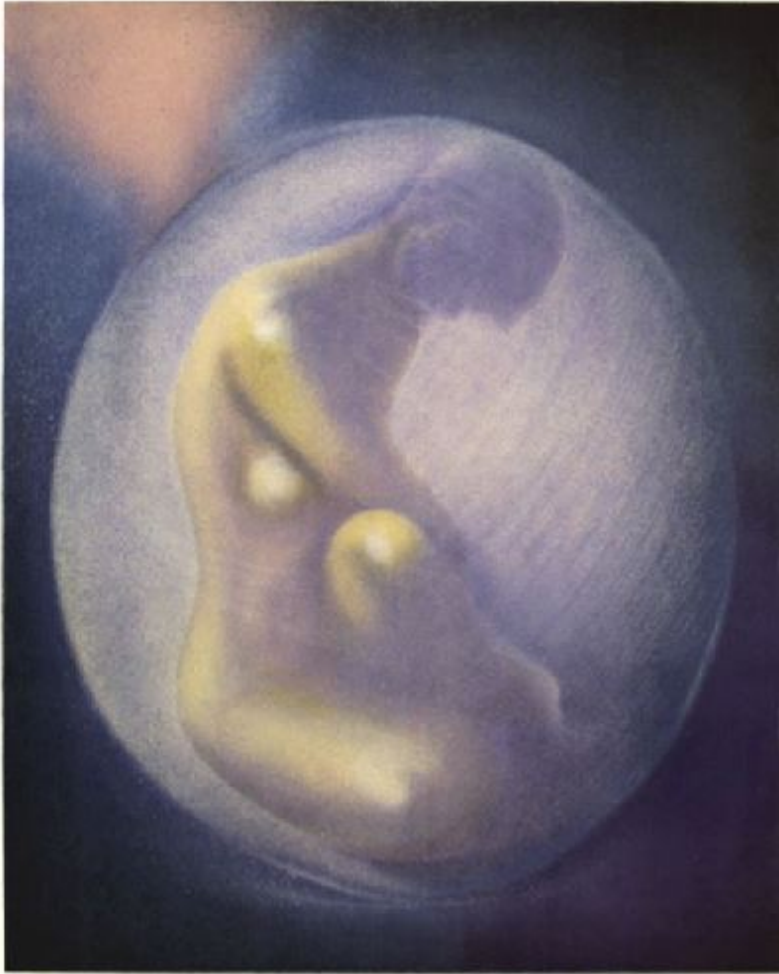
Lithograph on Paper

Edition

- Limited Edition of 300

- Hand-Signed 

- Numbered 



Custom Framing

- Design-it-yourself and Save!
- Museum-Quality Framing
- Up to 50% off Gallery Prices



Frame Your Artwork Online & Save!

Did you know that you can custom frame this artwork to your exact taste and specifications. Spark your own creativity and frame your artwork in as little as 2 minutes in three easy steps! Our Online frame shop offers museum quality framing services at prices up to 50% off your local gallery or frame shop. [See art collection](#) .

About Anna Chromy

Essentially, three regions of Europe influence Anna's imagination: Central Europe, where she grew up (born 18th July 1940 in Cesky Krumlov), Paris and the Côte d'Azur, and finally Tuscany, particularly Pietrasanta and the Riviera Versiliese.

The legacy of her youth between Salzburg and Vienna is primarily the influence of music, Mozart in particular. Only in 1989 was Anna allowed to see Prague again, when she put on her first exhibition of paintings on Czech soil. Since then she has been welcomed with open arms, notably for the great retrospective of her sculptures held in 2000 as part of the official programme put on by the city of Prague, cultural capital of Europe, then with her Fountain of Musicians and finally the Commendatore in front of the theatre where Mozart's Don Giovanni had its première in 1789.

In Paris Anna receives her artistic and cultural training. Having arrived at the end of 1968 after another student rebellion, Anna devotes herself to her studies to the Academy of Fine Arts, at the l'Académie de la Grande Chaumière and at the Sorbonne. What continues to make an impression on her is the artistic trends of the Left Bank as well as the philosophers, writers and singers of the time, Jacques Brel, Georges Brassens and Léo Ferré. Albert Camus, whose Myth of Sisyphus she was to later reinterpret, opens up to her a new world, full of light, which is to be the essential inspiration for the second part of her life: the Mediterranean.

After the Côte d'Azur first of all, where numerous monuments between Nice and Menton bear witness to her activity as a sculptress, she settles in Tuscany in 1990 in her studio in Pietrasanta on the Riviera Versiliesa. This region of Michelangelo, which has seen the passage of the greatest sculptors of our time, of Henry Moore at Botero, has become Anna Chromy's third artistic home after Prague and Paris. Endowed with great studios of marble and renowned foundries of art, the Tuscans are crazy about sculpture and know better than anyone else how to recognize and appreciate true artists. Their admiration for masterpieces is both vast and touching. They knew how to shower Anna with honours, including such things as the Groupe I Odyssée à Forte dei Marmi, and by erecting the statue entitled "Sisyphus 2004" in the Scuola Superiore di Sant'Anna in Pisa, the most prestigious university in the whole of Italy.

In 2005, the bicentenary of Napoleon's victory at Austerlitz, Anna Chromy with her works steeped in the European civilisation mounted a peaceful assault on the Place Vendôme, one of the most beautiful locations on the continent.

The discovery of the Chinese market at the end of 2005 inaugurated a new phase in Anna's artistic life and the Coat of Peace and other ArchiSculpture projects in 2006 added another dimension to her creations.

Lithograph on Paper

This printing technique uses a planographic process in which prints are pulled on a special press from a flat stone or metal surface. The surface has been chemically treated so that ink sticks only to the design areas, and is repelled by the non-image areas. Lithography was invented in Germany in 1798. The early history of lithography is dominated by great French artists such as Daumier and Delacroix, and later by Degas, Toulouse-Lautrec, Picasso, Braque and Miro.

Based on the principle that oil and water repel, a Lithograph is created when an artist produces an oil-based or pen image on a stone or piece of metal. This surface is then moistened and covered with an oil-based ink. The resulting chemical reaction between the oil and water drives away the ink on the surface except where the drawing was first done. Fine quality paper is then placed against the surface and a lithographic press is used to create the print. Modern technology and processes have provided artists with many unique methods with which to create magnificent lithographs. In the 1890s color lithography became enormously popular with French artists, Toulouse-Lautrec most notably of all, and by 1900 the medium in both color and monotone was an accepted part of printmaking, although France and the US have used it more than other countries. George Bellows, Alphonse Mucha, Pablo Picasso, Jasper Johns, David Hockney and Robert Rauschenberg are a few of the artists who have produced most of their prints in the medium.

As a special form of lithography, the Serilith process is sometimes used. Serilith are mixed media original prints created in a process where an artist uses the lithograph and serigraph process. The separations for both processes are hand drawn by the artist. The serilith technique is used primarily to create fine art limited print editions.

Copyright Notice: This document was generated on ArtRev.com on 11/24/2017 8:43:03 PM (U.S. Eastern Time Zone) - Copyright 2017 ArtRev.com, Inc. All Rights Reserved. The entire contents of this brochure is the property of ArtRev.com. You may not modify, copy, reproduce, republish, or distribute any portion of this brochure without the prior express written consent of ArtRev.com, Inc.

Authenticity & Price Match Guarantee: Shop with confidence. ArtRev.com is proud to be the first online art retailer to offer a " [lifetime authenticity guarantee](#) " with every limited edition or original work of art. Most limited edition and original artworks ship with a Certificate of Authenticity free of charge. This certificate is an official and valuable document that most insurance companies require in order to insure artworks against damage or theft. ArtRev.com will make every possible

attempt to match or beat the advertised price of any major Internet competitor, art gallery, or frame shop; given that they are authorized to sell the item from the publisher or artist, and have the exact item in stock available for immediate sale.

Pricing & Availability: Due to the dynamic nature of the ArtRev.com website, prices and availability are subject to change without notice. ArtRev.com is not responsible for any pricing errors.