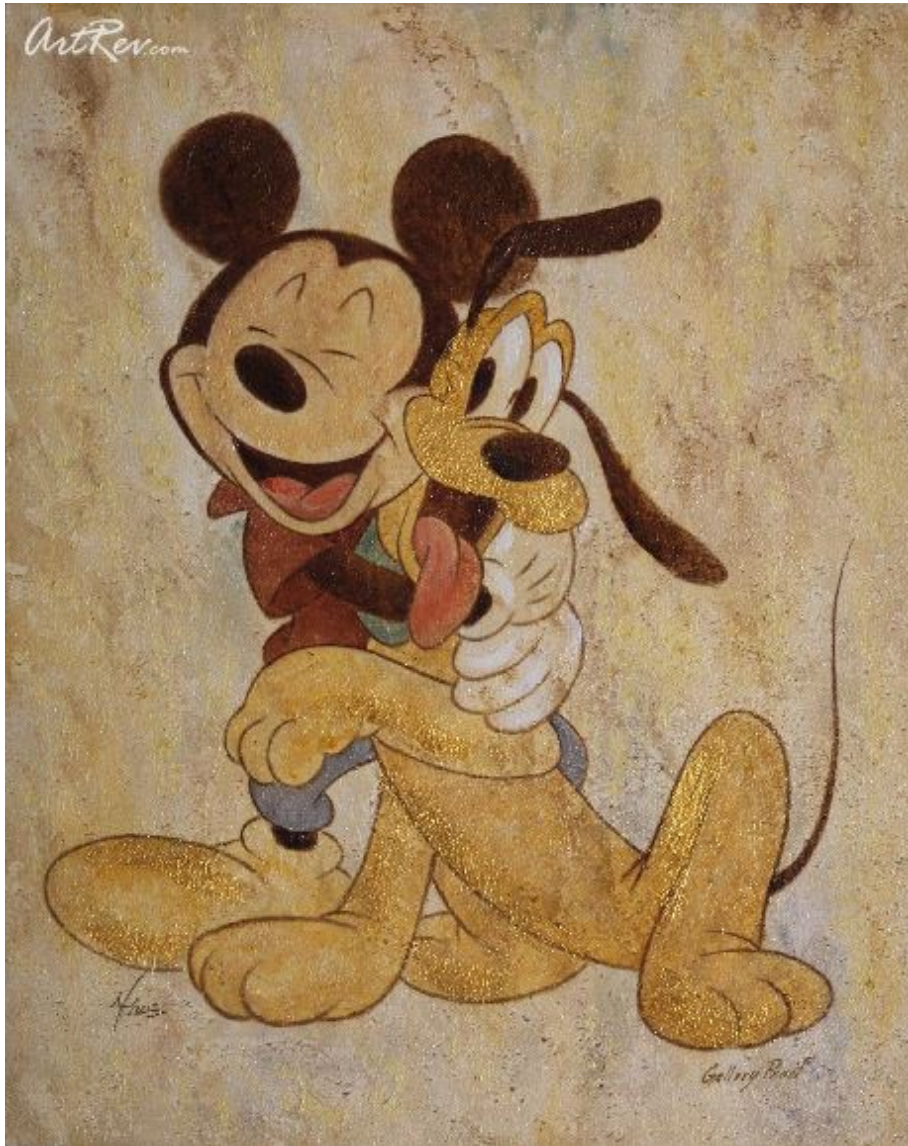


[Mickey and Pluto](#) by [Mike Kupka](#)

Giclee on Canvas - Main Subject: Animation & Cartoon



Item Number
4615338694

Retail Value
\$900

ArtRev.com Price
\$490
You Save 46% Off [-\$410.00]

Dimensions (As Shown)
16W x 20H Inches
40.64W x 50.8H cm

Medium
Giclee on Canvas

Custom Framing

- Design-it-yourself and Save!
- Museum-Quality Framing
- Up to 50% off Gallery Prices



Frame Your Artwork Online & Save!

Did you know that you can custom frame this artwork to your exact taste and specifications. Spark your own creativity and frame your artwork in as little as 2 minutes in three easy steps! Our Online frame shop offers museum quality framing services at prices up to 50% off your local gallery or frame shop. [See art collection](#) .

About Mike Kupka

As with most artists the desire was there to draw early on, he would wait all week for the Sunday comics and eagerly copy the latest Beatle Bailey. Mike started to paint during his time at duCret school of art in New Jersey when he found his mentor Peter Caras. He has not put the brush down since.

The art of illustration is multifaceted and requires extensive training as well as artistic ability. It is only natural for a great illustrator to be able to switch their style with little effort, growing an incredible portfolio and several types of artwork that demand attention. This is apparent when you see the work of Mike Kupka. Whether painting well-known rock stars like Ozzy Osbourne, or adding new depths to the classic horror characters of Frankenstein and Dracula, to his amazing depictions of the Disney Villain's. His affinity for the darker characters in life has developed into quite a scary portfolio.

As with most artists the desire was there to draw early on, he would wait all week for the Sunday comics and eagerly copy the latest Beatle Bailey. Mike started to paint during his time at duCret school of art in New Jersey when he found his mentor Peter Caras. He has not put the brush down since.

Even at the young age of 32, Michael's artwork captures more than a likeness of the characters he paints, his work creates old world flair. Bringing together all the ingredients necessary to make a painting work, which is why he attracts the eye. With the soft lines and rustic palate, The villains he depicts have always shown a greater range of emotions whether Captain Hook's eyes are boaring into you sizing you up or Cruella dreaming about the newest batch of puppies for her next fur coat. One thing is for sure you know that the characters he renders are so glad to be bad. n

Shadow, mood, composition, and color, his style lends to it and as he says about why villains, "You get more!" You can see from his works he is right.

Giclee on Canvas

Giclee [zhee-clay] is a French term meaning a 'squirt or spray of ink'. This process utilizes sophisticated printing techniques whereby an industrial 8-Color to 12-Color inkjet printer sprays a staggering four million droplets of ink per second onto archival fine art paper or canvas. Requiring highly sophisticated printers and special pigment inks for an extremely wide color gamut, this blend of fine art and state-of-the-art technology produces exceptional fine art prints. Giclee prints are usually coated with a high quality gloss or varnish to minimize abrasion and increase resistance to image fading. Additionally, protective coatings protect expensive prints against moisture.

Giclee prints render deep, saturated colors and retain minute detail, subtle tints and blends. The quality of the giclee print rivals traditional silver-halide and gelatin printing processes and is commonly found in museums, art galleries, and photographic galleries.

The giclee printing process provides better color accuracy than other means of reproduction. The prints may be hand embellished by the artist using paint, ink and gold foil stamping for a mixed media effect. Giclee prints are sometimes mistakenly referred to as Iris prints, which are 4-Color ink-jet prints from a printer pioneered in the late 1970s by Iris Graphics.

Numerous examples of giclee prints can be found in New York City at the Metropolitan Museum, the Museum of Modern Art, and the Chelsea Galleries. Recent auctions of giclee prints have fetched as much as \$20,000.

Copyright Notice: This document was generated on ArtRev.com on 10/24/2017 12:04:07 AM (U.S. Eastern Time Zone) - Copyright 2017 ArtRev.com, Inc. All Rights Reserved. The entire contents of this brochure is the property of ArtRev.com. You may not modify, copy, reproduce, republish, or distribute any portion of this brochure without the prior express written consent of ArtRev.com, Inc.

Authenticity & Price Match Guarantee: Shop with confidence. ArtRev.com is proud to be the first online art retailer to offer a "[lifetime authenticity guarantee](#)" with every limited edition or original work of art. Most limited edition and original artworks ship with a Certificate of Authenticity free of charge. This certificate is an official and valuable document that most insurance companies require in order to insure artworks against damage or theft. ArtRev.com will make every possible attempt to match or beat the advertised price of any major Internet competitor, art gallery, or frame shop; given that they are authorized to sell the item from the publisher or artist, and have the exact item in stock available for immediate sale.

Pricing & Availability: Due to the dynamic nature of the ArtRev.com website, prices and availability are subject to change without notice. ArtRev.com is not responsible for any pricing errors.

