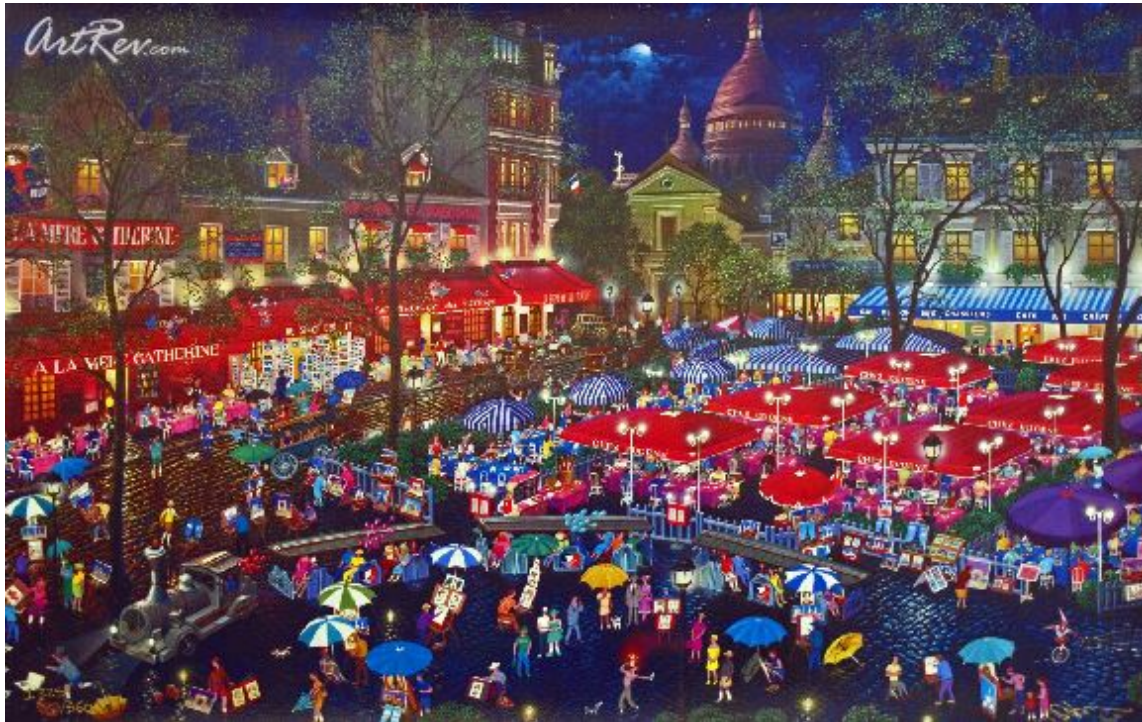


[A Night At Marmonte](#) by [Alexander Chen](#)
Giclee on Canvas - Main Subject: Cityscape



Item Number
3906231603

Retail Value
\$250

ArtRev.com Price
\$135
You Save 46% Off [-\$115.00]

Dimensions (As Shown)
17.5W x 11.5H Inches
44.45W x 29.21H cm

Medium
Giclee on Canvas

Edition
- Limited Edition of 550
- Hand-Signed 
- Numbered 

Custom Framing

- Design-it-yourself and Save!
- Museum-Quality Framing
- Up to 50% off Gallery Prices



Frame Your Artwork Online & Save!

Did you know that you can custom frame this artwork to your exact taste and specifications. Spark your own creativity and frame your artwork in as little as 2 minutes in three easy steps! Our Online frame shop offers museum quality framing services at prices up to 50% off your local gallery or frame shop. [See art collection](#) .

About Alexander Chen

Alexander Chen, an ordinary man with an extraordinary vision and talent, was born in Canton China in 1952. Alexander began drawing as a child developing his craft as he moved through the many changes that came into his life. At age 16, he moved to the countryside where for the next four years he worked as a farmer, all the while continuing to record in his art the world as it evolved before him. Then for six years he worked for an on the road theater, painting stage backgrounds.

At age 26 Alexander found himself once again in Canton, but this time as a student at the art schools and colleges where he continued his studies in art. While in art school, he met a fellow student who would later become his wife. Much had changed for this city born artist who for so many years lived as a country bumpkin.

Alexander's appreciation for both worlds gave him the broader dimensions visually and emotionally to translate into his paintings -- the heart and soul of city life as well as capturing the creator's genius that so evident in the beautiful countryside and

magnificent mountains.

In 1989 Alexander and his wife immigrated to America where he quickly translated his love for the United States into paintings that reflect deep feelings for our bustling cities and our beautiful countryside and national parks.

Many of these images have been used by companies such as; Toshiba Electric, Northwest Airlines and Shin Nippon Co (Japan). Many others are used as calendars, jigsaw puzzles, book illustrations and other retail products.

Alexander's paintings successfully capture perspectives others miss or cannot see. He spends as much as two months to complete many of his major works, all of which become, part of his 'Collectible Memories' series. These are gifts to his adopted land, things of beauty to be shared by all in appreciation of being given the opportunity to live a life he could only have dreamed of as a child.

Giclee on Canvas

Giclee [zhee-clay] is a French term meaning a 'squirt or spray of ink'. This process utilizes sophisticated printing techniques whereby an industrial 8-Color to 12-Color inkjet printer sprays a staggering four million droplets of ink per second onto archival fine art paper or canvas. Requiring highly sophisticated printers and special pigment inks for an extremely wide color gamut, this blend of fine art and state-of-the-art technology produces exceptional fine art prints. Giclee prints are usually coated with a high quality gloss or varnish to minimize abrasion and increase resistance to image fading. Additionally, protective coatings protect expensive prints against moisture.

Giclee prints render deep, saturated colors and retain minute detail, subtle tints and blends. The quality of the giclee print rivals traditional silver-halide and gelatin printing processes and is commonly found in museums, art galleries, and photographic galleries.

The giclee printing process provides better color accuracy than other means of reproduction. The prints may be hand embellished by the artist using paint, ink and gold foil stamping for a mixed media effect. Giclee prints are sometimes mistakenly referred to as Iris prints, which are 4-Color ink-jet prints from a printer pioneered in the late 1970s by Iris Graphics.

Numerous examples of giclee prints can be found in New York City at the Metropolitan Museum, the Museum of Modern Art, and the Chelsea Galleries. Recent auctions of giclee prints have fetched as much as \$20,000.

Copyright Notice: This document was generated on ArtRev.com on 4/25/2018 2:35:15 PM (U.S. Eastern Time Zone) - Copyright 2018 ArtRev.com, Inc. All Rights Reserved. The entire contents of this brochure is the property of ArtRev.com. You may not modify, copy, reproduce, republish, or distribute any portion of this brochure without the prior express written consent of ArtRev.com, Inc.

Authenticity & Price Match Guarantee: Shop with confidence. ArtRev.com is proud to be the first online art retailer to offer a "[lifetime authenticity guarantee](#)" with every limited edition or original work of art. Most limited edition and original artworks ship with a Certificate of Authenticity free of charge. This certificate is an official and valuable document that most insurance companies require in order to insure artworks against damage or theft. ArtRev.com will make every possible attempt to match or beat the advertised price of any major Internet competitor, art gallery, or frame shop; given that they are authorized to sell the item from the publisher or artist, and have the exact item in stock available for immediate sale.

Pricing & Availability: Due to the dynamic nature of the ArtRev.com website, prices and availability are subject to change without notice. ArtRev.com is not responsible for any pricing errors.