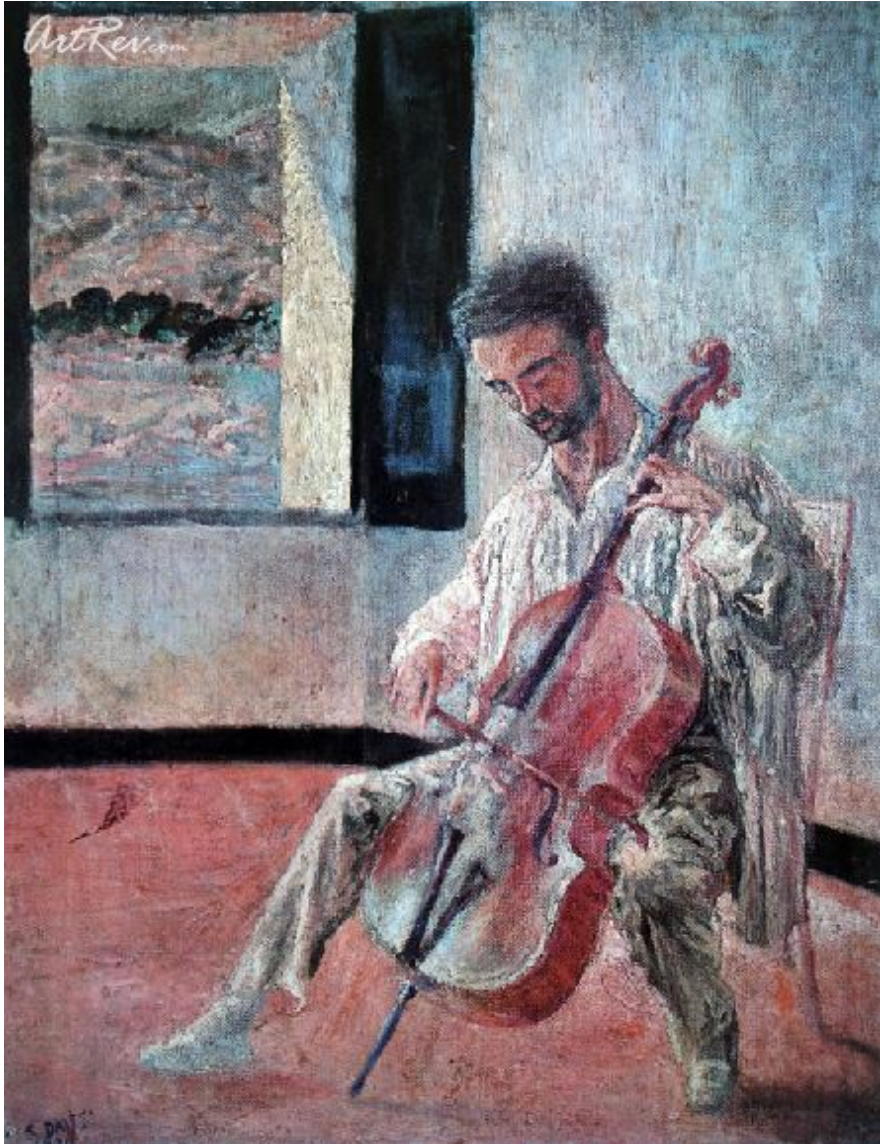


[Portrait of the Violoncellist Ricardo Pichot](#) by [Salvador Dali](#)

Original Lithographic Bookplate - Main Subject: Portrait



Item Number
3868831230

Retail Value
\$80

ArtRev.com Price
\$39
You Save 51% Off [-\$41.00]

Dimensions (As Shown)
7.75W x 10H Inches
19.68W x 25.4H cm

Medium
Original Lithographic Bookplate

Custom Framing

- Design-it-yourself and Save!
- Museum-Quality Framing
- Up to 50% off Gallery Prices



Frame Your Artwork Online & Save!

Did you know that you can custom frame this artwork to your exact taste and specifications. Spark your own creativity and frame your artwork in as little as 2 minutes in three easy steps! Our Online frame shop offers museum quality framing services at prices up to 50% off your local gallery or frame shop. [See art collection](#) .

About Salvador Dali

Whether working from pure inspiration or on a commissioned illustration, Dali's matchless insight and symbolic complexity are apparent. Dali is considered one of the top 5 artists of the past 100 years, along with Picasso, Chagall, Miro and Erte. Accomplished in all media, he was above all, a superb draftsman. His excellence as a creative artist will always set a standard for the art of the 20th century.

Salvador Felipe Jacinto Dali I Domenech was born at 8:45am on the morning of May 11, 1904, in the small agricultural town of Figueres, Spain. Figueres is located in the foothills of the Pyrenees, only sixteen miles from the French border in the Principality of Catalonia. The son of a prosperous notary, he spent his boyhood in Figueres and at the family's summer home in the coastal fishing village of Cadaques. His parents built his first studio in Cadaques. As an adult, he made his home with his wife Gala in nearby Port Lligat. Many of his paintings reflect his love of this area in Spain.

The young Dali attended the San Fernando Academy of Fine Arts in Madrid. Early recognition of Dali's talent came with his first one-man show, held in Barcelona in 1925. He became internationally known when three of his paintings, including the Basket of Bread (now in the Salvador Dali Museum Collection) were shown in the third annual Carnegie International Exhibition in Pittsburg in 1928.

The following year Dali went to Paris where he also held a one-man show. He also joined the Paris Surrealist Group. That same year Dali met Gala Eluard when she visited him in Cadaques with her husband, the French poet Paul Eluard. She became Dali's lover, muse, business manager, and chief inspiration. In 1934 Dali and Gala were married in a civil ceremony and made their first trip to America.



Dali emerged as a leader of the Surrealist movement and his painting, Persistence of Memory (1931) is still one of the best known surrealist works. But, as war approached, the apolitical Dali clashed with the Surrealists and he was expelled during a trial conducted by the group in 1934. Although he did exhibit works in international Surrealists exhibitions throughout the decade, asserting that: *le Surrealisme c'est moi*, by 1940, he was ready to move into a new era, a new type of painting with a preoccupation with science and religion - one that he termed *classic*.

Just prior to World War II, Dali and Gala fled from Europe, spending 1940-48 in the United States. The subsequent decades were very important years for the artist. The Museum of Modern Art in New York gave Dali his major retrospective in 1941. This was followed in 1942 by the publication of Dali's autobiography, *The Secret Life of Salvador Dali*.

In the years following 1949, Dali moved away from Surrealism and into his classic period and produced his 18 large canvases, many concerning scientific, historical or religious themes.

Among the best-known of these works are *Christ of St. John of the Cross*, in Glasgow, Scotland; *The Hallucinogenic Toreador* and *The Discovery of America by Christopher Columbus* in the Museum's collection; and *The Sacrament of the Last Supper* in the collection of the National Gallery in Washington D.C. Also at this time, Dali returned to the Catholic faith of his youth and he and Gala were married in a second ceremony in 1958, this time in a chapel near Girona, Spain.

In 1974 Dali opened the Teatro Museo Dali in Figueres. This was followed by retrospectives in Paris and London at the end of the decade. After Gala's death in 1982, Dali's health began to fail. It deteriorated further after he was severely burned in a fire in Gala's castle in Pubol, Spain, in 1984. Two years later, a pacemaker was implanted. Much of the years between 1980-89 were spent in almost total seclusion, first in Pubol and later in his private room in the Torre Galatea, adjacent to the Teattro Museo Dali.

On January 23, 1989, Salvador Dali died in a hospital in Figueres from heart failure and respiratory complications.

As an artist, Salvador Dali was not limited to a particular style or media. The body of his work, from early Impressionist paintings through his transitional surrealist works, and into his classical period, reveals a constantly growing and evolving artist. Dali worked in all media, leaving behind a wealth of oils, watercolors, drawings, graphics, sculptures, films, photographs, performance pieces, jewels and objects of all descriptions. As important, he left for prosperity the permission to explore all aspects of one's own life and to give them artistic expression.

When I paint, the sea roars. The others splash about in the bath. Dali

A Brief Chronology of Dali's Life:

1904: May 11th, Dali is born in Figueres, Spain.

1921: Studies at the School of Fine arts, Madrid, where he meets Louis Bunuel and Federico Garcia Lorca.

1926: Having been suspended for a year in 1923, Dali is now expelled from the School of Fine Arts shortly before his final examination for subversive behavior after claiming that no one on the faculty was competent enough to examine him. Makes his first visit to Paris and meets [Pablo Picasso](#) . Paints Basket of Bread.

1927: Designs costumes and sets for the premiere of Lorca's Mariana Pineda in Barcelona.

1929: Becomes a member of the [Surrealist](#) movement, launched in Paris by the poet Andre Breton in 1924 with the publication of his Surrealist Manifesto. Makes the film Un Chien Andalou with Louis Bunuel. Meets Gala, the wife of the Surrealist poet Paul Eluard, and they become lifelong companions.

1930: Collaborates with Bunuel on the film L'Age d'Or. Buys a house in Port Lligat, a small fishing village near Cadaques on the southern coast of Spain. Participates in the first Surrealist exhibition in the United States at the Wadsworth Atheneum, Hartford.

1931: Proposes to expand Surrealism with the Surrealist Object in his short text Objets Surrealistes . Paints Persistence of Memory.

1933: Writes Le Mythe Tragique de l'Angelus de Millet, Interpretation paranoiaque-critique , but it was not published until 1963 in Paris.

1934: Makes a series of 30 etchings for Lautreamont's Les Chants de Maldoror. Marries Gala.

1935: Lectures on Surrealism at the Museum of Modern Art, New York.

1938: Meets Freud in London.

1940: Moves to the United States where he lives until 1948.

1941: Designs first jewelry with the Duke of Verdura.

1942: Publishes The Secret Life of Salvador Dali.

1945: Designs dream sequences for Alfred Hitchcock's film Spellbound. Begins collaboration with Walt Disney to create an animated cartoon entitled [Destino](#) .

1951: Begins work on watercolors for drawings for [Dante's Divine Comedy](#) .

1958: Marries Gala in the Catholic Church.

1968: Films a television advertisement for [Lanvin chocolates](#) .

1969: Designs the [Chupa Chups](#) logo.

1972: Exhibition of holograms at Knoedler Gallery, New York.

1978: Elected as a member of the Academie des Beaux-Arts.

1982: June 10th, Gala dies in Port Lligat.

1989: January 23rd, Dali dies of heart failure in Figueres at the age of 84.

2003: The animated cartoon, [Destino](#) , is released posthumously.

Original Lithographic Bookplate

Sorry. No information about this medium is available.

Copyright Notice: This document was generated on [ArtRev.com](#) on 7/22/2017 10:51:14 PM (U.S. Eastern Time Zone) - Copyright 2017 ArtRev.com, Inc. All Rights Reserved. The entire contents of this brochure is the property of ArtRev.com. You may not modify, copy, reproduce, republish, or distribute any portion of this brochure without the prior express written consent of ArtRev.com, Inc.

Authenticity & Price Match Guarantee: Shop with confidence. ArtRev.com is proud to be the first online art retailer to offer a "[lifetime authenticity guarantee](#) " with every limited edition or original work of art. Most limited edition and original artworks ship with a Certificate of Authenticity free of charge. This certificate is an official and valuable document that most insurance companies require in order to insure artworks against damage or theft. ArtRev.com will make every possible attempt to match or beat the advertised price of any major Internet competitor, art gallery, or frame shop; given that they are authorized to sell the item from the publisher or artist, and have the exact item in stock available for immediate sale.

Pricing & Availability: Due to the dynamic nature of the ArtRev.com website, prices and availability are subject to change without notice. ArtRev.com is not responsible for any pricing errors.