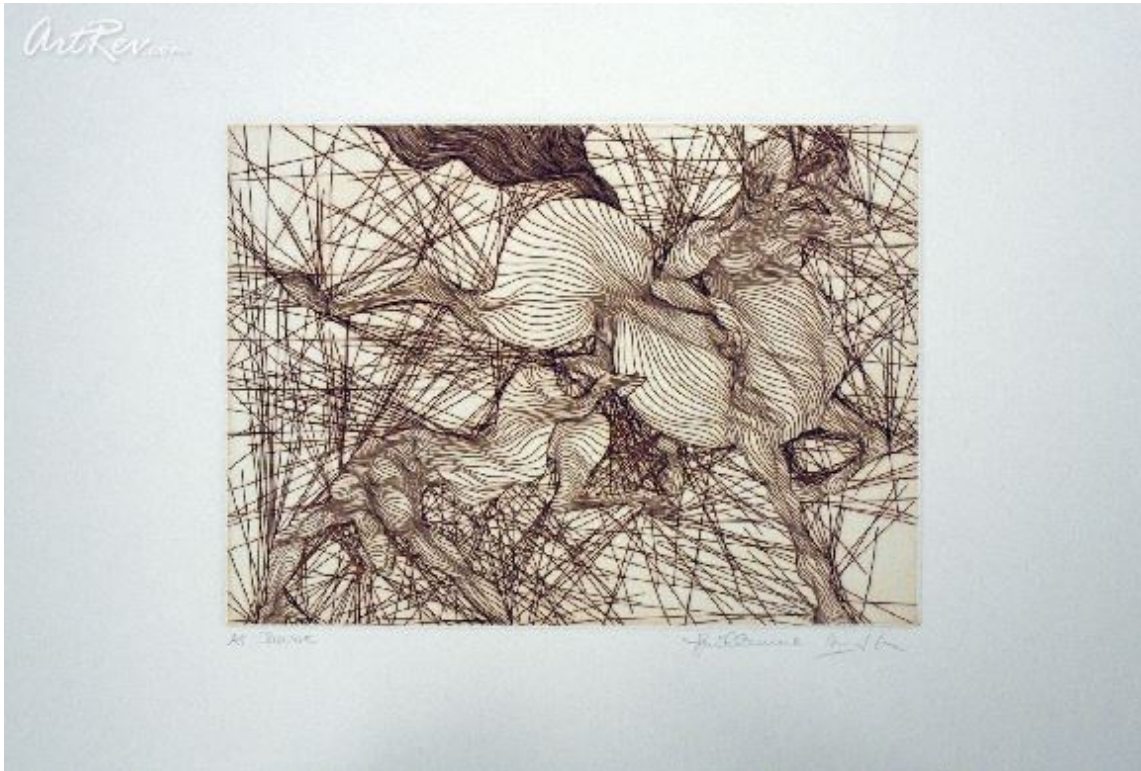


[Chasse](#) by [Guillaume Azoulay](#)
Etching - Main Subject: Abstract



Item Number
3853031072

Retail Value
\$2,000

ArtRev.com Price
\$950
You Save 52% Off [-\$1,050.00]

Dimensions (As Shown)
30W x 22H Inches
76.2W x 55.88H cm

Medium
Etching

Edition
- Limited Edition of AP
- Hand-Signed
- Numbered

Custom Framing

- Design-it-yourself and Save!
- Museum-Quality Framing
- Up to 50% off Gallery Prices



Frame Your Artwork Online & Save!

Did you know that you can custom frame this artwork to your exact taste and specifications. Spark your own creativity and frame your artwork in as little as 2 minutes in three easy steps! Our Online frame shop offers museum quality framing services at prices up to 50% off your local gallery or frame shop. [See art collection](#) .

About Guillaume Azoulay

Guillaume Azoulay, a self-taught artist, was born in Casablanca, Morocco in 1949. His parents settled in Paris when Azoulay was ten and by the age of thirteen, he was sketching and selling his drawings on the streets and planning his career as an artist. As Azoulay met people from various parts of the world, his interest in traveling grew and when he was fourteen he left home and hitchhiked across Europe and the Middle East. His desire to see and be part of the life, history and beauty of the world took him from Copenhagen to Rome, from Lisbon to Jerusalem. Azoulay made the world his university, people were his main subject with their joys and pains and ways of life. Guillaume became fluent in five languages.

Eventually, Azoulay settled in Israel in 1967 where he applied to Betzalel, the Middle East's most famous art academy. They rejected his application but this did not deter Azoulay from continuing his studies. Azoulay studied drama and graduated as an actor. Azoulay appeared in the Israeli production of the rock musical *Hair* as well as other shows on the Israeli stage. Unable to share his time fully between the theater and painting, Azoulay chose the expression of visual art. After moving several times

Azoulay settled in California in March of 1976 where he now lives with his family. Azoulay's wife is Charmaine Seal, a noted ballerina, yet another one of Azoulay's favorite subjects in his artwork. They have two sons Lawrence and Arnoud, and daughter Ondine who is the subject of an etching that is part of the collection of the Bibliotheque National Du Louvre in Paris.

The brilliance of Azoulay's art centers on his ability to convey the purity of line to create strong illusions of fluid motion and life. Line is the key element of design in Azoulay's artwork. It is through his organic line that Azoulay creates balance, harmony, contrast, and the illusion of depth and movement in each one of his compositions.

Etching

Etching is the process of using strong acid or mordant to cut into the unprotected parts of a metal surface to create a design in intaglio in the metal (the original process in modern manufacturing other chemicals may be used on other types of material). As an intaglio method of printmaking it is, along with engraving, the most important technique for old master prints, and remains widely used today.

In pure etching, a metal plate is covered with a waxy ground which is resistant to acid. The artist then scratches off the ground with a pointed etching needle where he or she wants a line to appear in the finished piece, so exposing the bare metal. The echepe, a tool with a slanted oval section is also used for swelling lines. The plate is then dipped in a bath of acid, technically called the mordant (French for biting), or has acid washed over it. The acid bites into the metal, where it is exposed, leaving behind lines sunk into the plate. The remaining ground is then cleaned off the plate. The plate is inked all over, and then the ink wiped off the surface, leaving only the ink in the etched lines.

The plate is then put through a high-pressure printing press together with a sheet of paper (often moistened to soften it). The paper picks up the ink from the etched lines, making a print. The process can be repeated many times; typically several hundred impressions could be printed before the plate shows much sign of wear. The work on the plate can also be added to by repeating the whole process; this creates an etching which exists in more than one state.

Etching has often been combined with other intaglio techniques such as engraving e.g. Rembrandt or aquatint e.g. Goya.

Copyright Notice: This document was generated on ArtRev.com on 11/18/2017 8:21:06 PM (U.S. Eastern Time Zone) - Copyright 2017 ArtRev.com, Inc. All Rights Reserved. The entire contents of this brochure is the property of ArtRev.com. You may not modify, copy, reproduce, republish, or distribute any portion of this brochure without the prior express written consent of ArtRev.com, Inc.

Authenticity & Price Match Guarantee: Shop with confidence. ArtRev.com is proud to be the first online art retailer to offer a " [lifetime authenticity guarantee](#) " with every limited edition or original work of art. Most limited edition and original artworks ship with a Certificate of Authenticity free of charge. This certificate is an official and valuable document that most insurance companies require in order to insure artworks against damage or theft. ArtRev.com will make every possible attempt to match or beat the advertised price of any major Internet competitor, art gallery, or frame shop; given that they are authorized to sell the item from the publisher or artist, and have the exact item in stock available for immediate sale.

Pricing & Availability: Due to the dynamic nature of the ArtRev.com website, prices and availability are subject to change without notice. ArtRev.com is not responsible for any pricing errors.