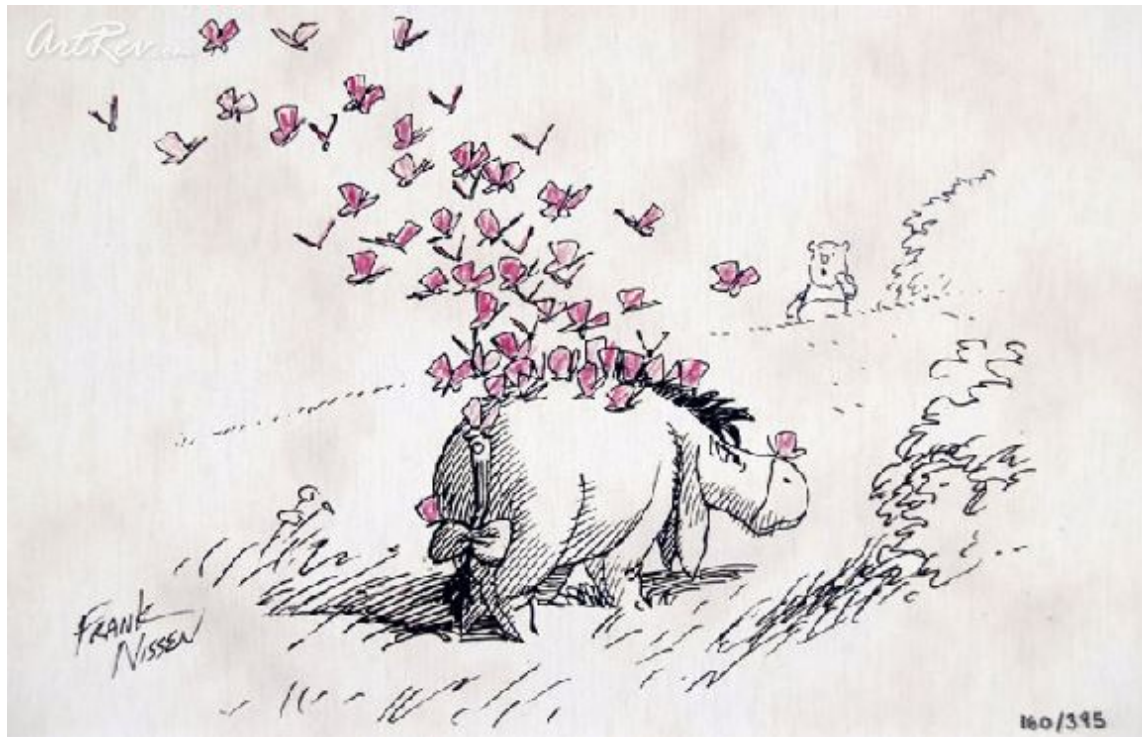


[Lifting Your Spirits](#) by [Frank Nissen](#)

Giclee on Paper - Main Subject: Animation & Cartoon



Item Number

3593628477

Retail Value

\$45

ArtRev.com Price

\$45

Call for best price!

Dimensions (As Shown)

8.25W x 5.25H Inches

20.96W x 13.34H cm

Medium

Giclee on Paper

Edition

- Limited Edition of 395

- Hand-Signed 

- Numbered 

Custom Framing

- Design-it-yourself and Save!
- Museum-Quality Framing
- Up to 50% off Gallery Prices



Frame Your Artwork Online & Save!

Did you know that you can custom frame this artwork to your exact taste and specifications. Spark your own creativity and frame your artwork in as little as 2 minutes in three easy steps! Our Online frame shop offers museum quality framing services at prices up to 50% off your local gallery or frame shop. [See art collection](#) .

About Frank Nissen

Frank Nissen (Director) grew up in Auburn, California and attended the Art Center College of Design in Pasadena. He spent three years in the Army before graduating with honors with a bachelor of arts.

After college, Nissen went to Canada to visit friends. While touring Toronto, he visited the Cinera animation studios and received a job offer. Deciding to relocate, he worked in commercial and educational programming for the next five years, cutting his teeth in the world of animation.

From there, Nissen moved on to Nelvana, where he was co-director on several half-hour series, including "Cosmic Christmas" and "The Devil and Daniel Mouse." In addition, he worked in visual and story development on other projects such as George Lucas's "Ewoks" and "Droids" series. He was lead animator on "Rock and Rule" and worked as a character designer, storyboard supervisor and dialogue writer on "Pippi Longstocking." Nissen also did story development for the animated feature "Little Nemo:

Adventures In Slumberland" for the Japanese studio, T.M.S.

In 1996, at the recommendation of a friend who worked for Walt Disney Animation in Orlando, Nissen relocated to Los Angeles to work for Disney. He immediately began doing story work on features such as "Dinosaur" and "Tarzan," and worked as a storyboard artist and production designer on "Treasure Planet," which he describes as a "fabulous experience."

Nissen later branched out into television animation, working on "Mickey's Twice Upon a Christmas" and "Three Musketeers."

Giclee on Paper

Giclee [zhee-clay] is a French term meaning a 'squirt or spray of ink'. This process utilizes sophisticated printing techniques whereby an industrial 8-Color to 12-Color inkjet printer sprays a staggering four million droplets of ink per second onto archival fine art paper or canvas. Requiring highly sophisticated printers and special pigment inks for an extremely wide color gamut, this blend of fine art and state-of-the-art technology produces exceptional fine art prints. Giclee prints are usually coated with a high quality gloss or varnish to minimize abrasion and increase resistance to image fading. Additionally, protective coatings protect expensive prints against moisture.

Giclee prints render deep, saturated colors and retain minute detail, subtle tints and blends. The quality of the giclee print rivals traditional silver-halide and gelatin printing processes and is commonly found in museums, art galleries, and photographic galleries.

The giclee printing process provides better color accuracy than other means of reproduction. The prints may be hand embellished by the artist using paint, ink and gold foil stamping for a mixed media effect. Giclee prints are sometimes mistakenly referred to as Iris prints, which are 4-Color ink-jet prints from a printer pioneered in the late 1970s by Iris Graphics.

Numerous examples of giclee prints can be found in New York City at the Metropolitan Museum, the Museum of Modern Art, and the Chelsea Galleries. Recent auctions of giclee prints have fetched as much as \$20,000.

Copyright Notice: This document was generated on ArtRev.com on 6/27/2017 1:32:54 AM (U.S. Eastern Time Zone) - Copyright 2017 ArtRev.com, Inc. All Rights Reserved. The entire contents of this brochure is the property of ArtRev.com. You may not modify, copy, reproduce, republish, or distribute any portion of this brochure without the prior express written consent of ArtRev.com, Inc.

Authenticity & Price Match Guarantee: Shop with confidence. ArtRev.com is proud to be the first online art retailer to offer a "[lifetime authenticity guarantee](#)" with every limited edition or original work of art. Most limited edition and original artworks ship with a Certificate of Authenticity free of charge. This certificate is an official and valuable document that most insurance companies require in order to insure artworks against damage or theft. ArtRev.com will make every possible attempt to match or beat the advertised price of any major Internet competitor, art gallery, or frame shop; given that they are authorized to sell the item from the publisher or artist, and have the exact item in stock available for immediate sale.

Pricing & Availability: Due to the dynamic nature of the ArtRev.com website, prices and availability are subject to change without notice. ArtRev.com is not responsible for any pricing errors.