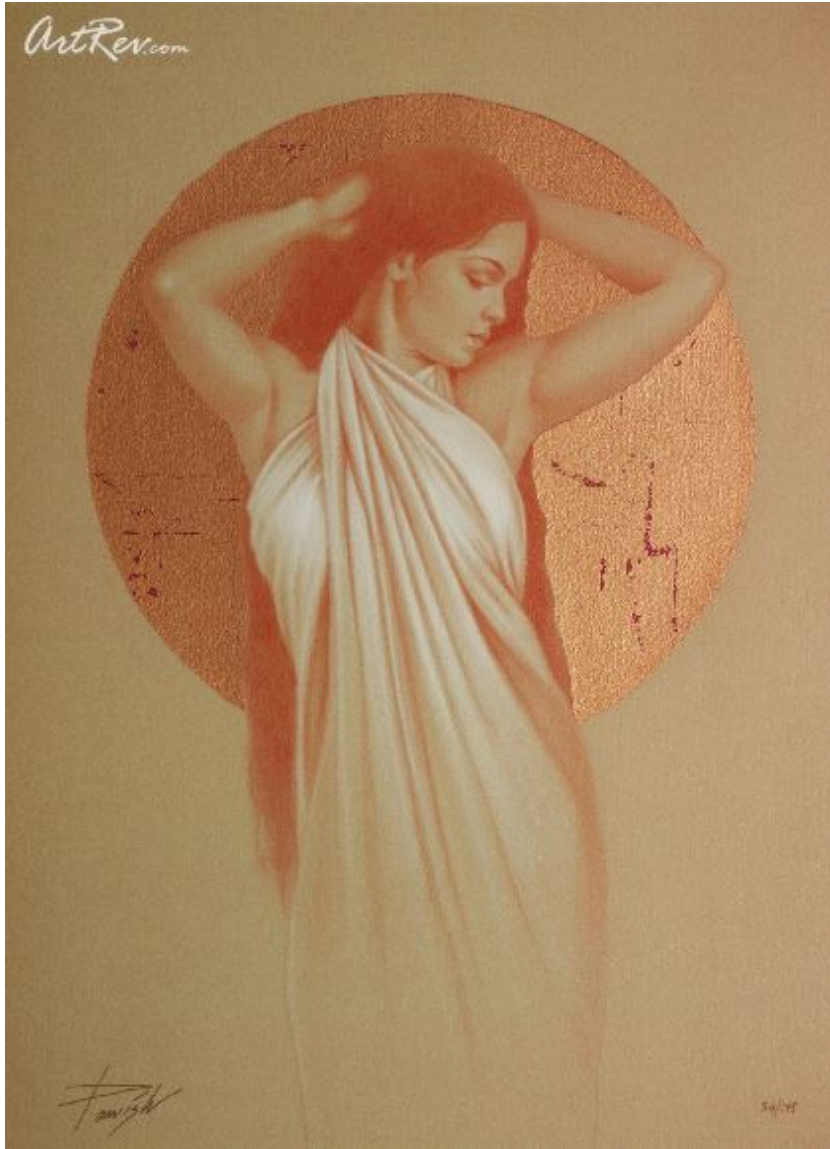


[Evening](#) by [J.D. Parrish](#) (On Sale!)

Giclee on Paper - Main Subject: Portrait



**Item Number**

3574128282

**Retail Value**

\$400

**ArtRev.com Price**

\$225

You Save 44% Off [-\$175.00]

**Dimensions (As Shown)**

19.75W x 27H Inches


50.16W x 68.58H cm


**Medium**

Giclee on Paper

**Edition**

- Limited Edition of 175

- Hand-Signed 

- Numbered 

**Custom Framing**

- Design-it-yourself and Save!
- Museum-Quality Framing
- Up to 50% off Gallery Prices



**Frame Your Artwork Online & Save!**

Did you know that you can custom frame this artwork to your exact taste and specifications. Spark your own creativity and frame your artwork in as little as 2 minutes in three easy steps! Our Online frame shop offers museum quality framing services at prices up to 50% off your local gallery or frame shop. [See art collection](#) .

**About J.D. Parrish**

J.D. Parrish (b. 1956) is an American artist who is known for his enigmatic figurative and equestrian compositions. Parrish calls his style, *restrained realism* because the pieces are punctuated with highly detailed areas and open spaces, inviting the viewer

to study the work and create their own narrative. Parrish believes that any emotion can be communicated and evoked through the expressions and articulations of the human form. His style is reminiscent of 15th and 16th century Renaissance painters and Classical 19th century paintings. Parrish was educated at Arizona State University and then studied at the Art Center of Design in Pasadena, California, where he received his Bachelor of Fine Arts degree in Illustration. Currently Parrish teaches illustration, drawing and painting, and continues to paint and work as an artist. Some of his clients include Touchstone, Paramount Pictures, Universal Studios, Warner Brothers, Disney Studios, CBS Television, Ringling Brothers Barnum & Bailey Circus, Marriott Inns, Red Lion Inns, Double Inns, America West, Honeywell Corporation, and Swensens.

### **Giclee on Paper**

Giclee [zhee-clay] is a French term meaning a 'squirt or spray of ink'. This process utilizes sophisticated printing techniques whereby an industrial 8-Color to 12-Color inkjet printer sprays a staggering four million droplets of ink per second onto archival fine art paper or canvas. Requiring highly sophisticated printers and special pigment inks for an extremely wide color gamut, this blend of fine art and state-of-the-art technology produces exceptional fine art prints. Giclee prints are usually coated with a high quality gloss or varnish to minimize abrasion and increase resistance to image fading. Additionally, protective coatings protect expensive prints against moisture.

Giclee prints render deep, saturated colors and retain minute detail, subtle tints and blends. The quality of the giclee print rivals traditional silver-halide and gelatin printing processes and is commonly found in museums, art galleries, and photographic galleries.

The giclee printing process provides better color accuracy than other means of reproduction. The prints may be hand embellished by the artist using paint, ink and gold foil stamping for a mixed media effect. Giclee prints are sometimes mistakenly referred to as Iris prints, which are 4-Color ink-jet prints from a printer pioneered in the late 1970s by Iris Graphics.

Numerous examples of giclee prints can be found in New York City at the Metropolitan Museum, the Museum of Modern Art, and the Chelsea Galleries. Recent auctions of giclee prints have fetched as much as \$20,000.

---

**Copyright Notice:** This document was generated on [ArtRev.com](http://ArtRev.com) on 7/23/2017 2:44:39 PM (U.S. Eastern Time Zone) - Copyright 2017 ArtRev.com, Inc. All Rights Reserved. The entire contents of this brochure is the property of ArtRev.com. You may not modify, copy, reproduce, republish, or distribute any portion of this brochure without the prior express written consent of ArtRev.com, Inc.

**Authenticity & Price Match Guarantee:** Shop with confidence. ArtRev.com is proud to be the first online art retailer to offer a "[lifetime authenticity guarantee](#)" with every limited edition or original work of art. Most limited edition and original artworks ship with a Certificate of Authenticity free of charge. This certificate is an official and valuable document that most insurance companies require in order to insure artworks against damage or theft. ArtRev.com will make every possible attempt to match or beat the advertised price of any major Internet competitor, art gallery, or frame shop; given that they are authorized to sell the item from the publisher or artist, and have the exact item in stock available for immediate sale.

**Pricing & Availability:** Due to the dynamic nature of the ArtRev.com website, prices and availability are subject to change without notice. ArtRev.com is not responsible for any pricing errors.