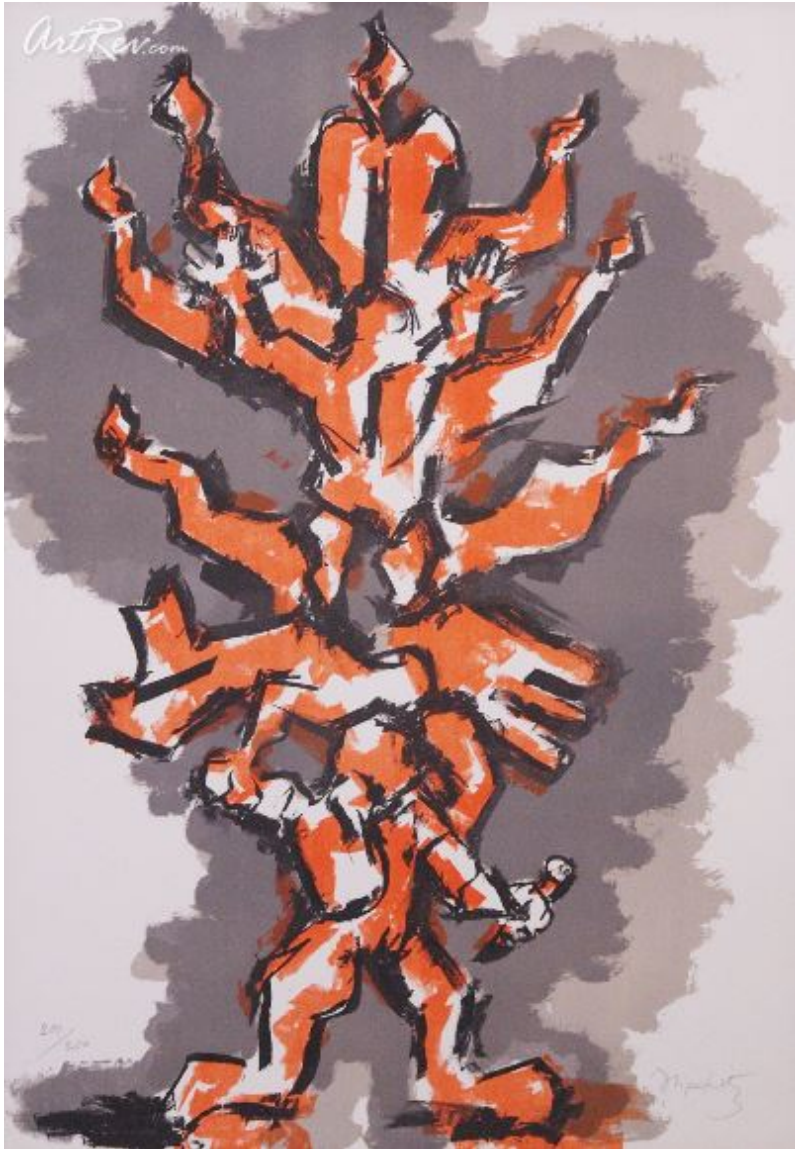


[Tree of Life](#) by [Jacques Lipchitz](#) (On Sale!)

Lithograph on Paper - Main Subject: Abstract



**Item Number**

3568028222

**Retail Value**

\$400

**ArtRev.com Price**

\$150

You Save 62% Off [-\$250.00]

**Dimensions (As Shown)**

18.5W x 26.5H Inches

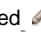
46.99W x 67.31H cm


**Medium**

Lithograph on Paper

**Edition**

- Limited Edition of 250

- Hand-Signed 

- Numbered 

**Custom Framing**

- Design-it-yourself and Save!
- Museum-Quality Framing
- Up to 50% off Gallery Prices



**Frame Your Artwork Online & Save!**

Did you know that you can custom frame this artwork to your exact taste and specifications. Spark your own creativity and frame your artwork in as little as 2 minutes in three easy steps! Our Online frame shop offers museum quality framing services at prices up to 50% off your local gallery or frame shop. [See art collection](#) .

**About Jacques Lipchitz**

Chaim Jakob Lipchitz was born on August 22, 1891 as son of French-American parents in Druskieniki, Lithuania. In 1909 he went to Paris, where he started calling himself Jacques and enrolled at the "École des Beaux-Arts" and the "Académie Julian". His

contacts with Archipenko, Picasso and the Cubist circles had considerable influence on his work.

In 1913 he produced his first Cubist sculptures. In 1920 he had his first solo exhibition at the Paris gallery "Léonce Rosenberg". Two years later Jacques Lipchitz joined the group "Esprit Nouveau".

Between 1915 and 1925 the artist created Cubist sculptures, worked in stone, whose figures and heads are reduced to block-like forms and are partly colored. In 1925 the artist began a series of "transparent" sculptures permeated by space created in cire-perdu process, with which he moved away from the Cubist formal language.

Angular structures gave way to an unconstrained sculptural style, which expressed itself in the free use of natural forms that became increasingly organic. In 1930 the first retrospective takes place at the "Galerie de la Renaissance" in Paris, followed by the first major exhibition at the "Brummer Gallery" in New York in 1935.

Lipchitz completed his "Prometheus" for the 1937 Paris World Exposition and was awarded a gold medal for the sculpture. When German troops occupied Paris in 1940, Lipchitz fled to Toulouse, from where he soon left France for good and went to the US, where he settled in New York.

In New York his work was soon regularly shown at the "Buchholz Gallery", which later became "Curt Valentin Gallery". In 1947 Lipchitz moved to Hastings-on-Hudson in New York state.

From the 1950s on, Lipchitz's work was honored with numerous exhibitions and awards such as retrospectives in New York and Minneapolis in 1954. Lipchitz took part at "documenta" in Kassel twice (in 1959 and 1964). From 1962 Lipchitz received numerous important public commissions both in the US and Israel, including "Peace on Earth", a nearly 15 meter high bronze sculpture that was unveiled in Los Angeles in 1969.

Jacques Lipchitz died on Capri on May 16, 1973. He was buried in Jerusalem. His second wife, the Berlin sculptor Y. Halberstadt, completed the colossal sculpture "Our Tree of Life", which had been commissioned for Mount Scopus in Israel, and set it up on Jerusalem's highest hill.

### **Lithograph on Paper**

This printing technique uses a planographic process in which prints are pulled on a special press from a flat stone or metal surface. The surface has been chemically treated so that ink sticks only to the design areas, and is repelled by the non-image areas. Lithography was invented in Germany in 1798. The early history of lithography is dominated by great French artists such as Daumier and Delacroix, and later by Degas, Toulouse-Lautrec, Picasso, Braque and Miro.

Based on the principle that oil and water repel, a Lithograph is created when an artist produces an oil-based or pen image on a stone or piece of metal. This surface is then moistened and covered with an oil-based ink. The resulting chemical reaction between the oil and water drives away the ink on the surface except where the drawing was first done. Fine quality paper is then placed against the surface and a lithographic press is used to create the print. Modern technology and processes have provided artists with many unique methods with which to create magnificent lithographs. In the 1890s color lithography became enormously popular with French artists, Toulouse-Lautrec most notably of all, and by 1900 the medium in both color and monotone was an accepted part of printmaking, although France and the US have used it more than other countries. George Bellows, Alphonse Mucha, Pablo Picasso, Jasper Johns, David Hockney and Robert Rauschenberg are a few of the artists who have produced most of their prints in the medium.

As a special form of lithography, the Serilith process is sometimes used. Serilith are mixed media original prints created in a process where an artist uses the lithograph and serigraph process. The separations for both processes are hand drawn by the artist. The serilith technique is used primarily to create fine art limited print editions.

---

**Copyright Notice:** This document was generated on [ArtRev.com](http://ArtRev.com) on 12/17/2017 10:27:19 PM (U.S. Eastern Time Zone) - Copyright 2017 ArtRev.com, Inc. All Rights Reserved. The entire contents of this brochure is the property of ArtRev.com. You may not modify, copy, reproduce, republish, or distribute any portion of this brochure without the prior express written consent of ArtRev.com, Inc.

**Authenticity & Price Match Guarantee:** Shop with confidence. ArtRev.com is proud to be the first online art retailer to offer a "[lifetime authenticity guarantee](#)"

with every limited edition or original work of art. Most limited edition and original artworks ship with a Certificate of Authenticity free of charge. This certificate is an official and valuable document that most insurance companies require in order to insure artworks against damage or theft. ArtRev.com will make every possible attempt to match or beat the advertised price of any major Internet competitor, art gallery, or frame shop; given that they are authorized to sell the item from the publisher or artist, and have the exact item in stock available for immediate sale.

**Pricing & Availability:** Due to the dynamic nature of the ArtRev.com website, prices and availability are subject to change without notice. ArtRev.com is not responsible for any pricing errors.