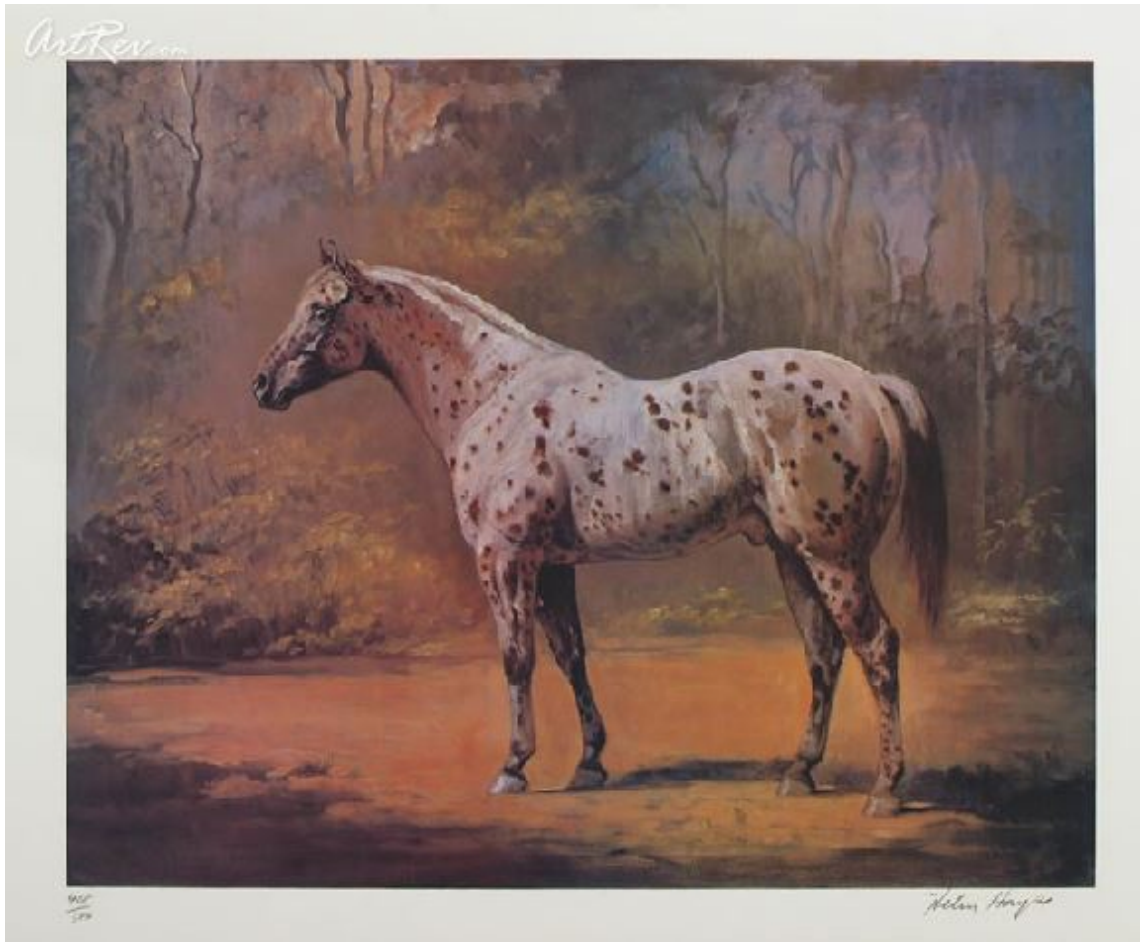


[Appaloosa Stud](#) by [Helen Hayse](#) (On Sale!)

Lithograph on Paper - Main Subject: Animals & Birds



Item Number

3010422646

Retail Value

\$400

ArtRev.com Price

\$50

You Save 88% Off [-\$350.00]

Dimensions (As Shown)

22.75W x 18H Inches

57.78W x 45.72H cm

Medium

Lithograph on Paper

Edition

- Limited Edition of 500

- Hand-Signed 

- Numbered 

Custom Framing

- Design-it-yourself and Save!
- Museum-Quality Framing
- Up to 50% off Gallery Prices



Frame Your Artwork Online & Save!

Did you know that you can custom frame this artwork to your exact taste and specifications. Spark your own creativity and frame your artwork in as little as 2 minutes in three easy steps! Our Online frame shop offers museum quality framing services at prices up to 50% off your local gallery or frame shop. [See art collection](#) .

About Helen Hayse

Helen Hayse was born in southern Indiana. Both her parents and grandparents were horse breeders. She was initiated early into the excitement of the showing when as a child she became acquainted with the leading showmen and women of the day. She sold her first horse painting at the age of ten.

She married Walton Hayse, third generation breeder and exhibitor of the American Saddle Horse. Mrs. Hayse has concentrated on that breed for most of her career.

Like her teacher, the great George Ford Morris, she is noted for her ability to achieve an individual likeness and quality that

makes each horse like himself and none other.

Since the 1930's, Mrs. Hayse has painted the leading great champion show horses for America's most prominent breeders and exhibitors. Most of her work is in the private collections of the families that commissioned them. She has also published a number of lithographs of the classic champions.

Like Mr. George Ford Morris and his distinguished predecessors George Stubbs, John Herring of England and the great Rosa Bonheur of France, Mrs. Hayse is not only an artist, but a lifetime horsewoman with many years of study of bloodlines behind her. She has also been involved in the breeding, care and training of horses. To produce a portrait acceptable to horsemen, a specialist like Mrs. Hayse must possess not only skill and formal training, but a thorough knowledge of horses drawn from personal experience and dedication.

Mrs. Hayse's images can be appreciated by both horse lovers and a much wider public. Both the subjects of the paintings and the paintings themselves are hallmarks of excellence. Mrs. Hayse's finely honed skills and her craftsmanship are integral to her work. Her subjects and her paintings are marvelously elegant and evocative of more gracious times.

Lithograph on Paper

This printing technique uses a planographic process in which prints are pulled on a special press from a flat stone or metal surface. The surface has been chemically treated so that ink sticks only to the design areas, and is repelled by the non-image areas. Lithography was invented in Germany in 1798. The early history of lithography is dominated by great French artists such as Daumier and Delacroix, and later by Degas, Toulouse-Lautrec, Picasso, Braque and Miro.

Based on the principle that oil and water repel, a Lithograph is created when an artist produces an oil-based or pen image on a stone or piece of metal. This surface is then moistened and covered with an oil-based ink. The resulting chemical reaction between the oil and water drives away the ink on the surface except where the drawing was first done. Fine quality paper is then placed against the surface and a lithographic press is used to create the print. Modern technology and processes have provided artists with many unique methods with which to create magnificent lithographs. In the 1890s color lithography became enormously popular with French artists, Toulouse-Lautrec most notably of all, and by 1900 the medium in both color and monotone was an accepted part of printmaking, although France and the US have used it more than other countries. George Bellows, Alphonse Mucha, Pablo Picasso, Jasper Johns, David Hockney and Robert Rauschenberg are a few of the artists who have produced most of their prints in the medium.

As a special form of lithography, the Serilith process is sometimes used. Serilith are mixed media original prints created in a process where an artist uses the lithograph and serigraph process. The separations for both processes are hand drawn by the artist. The serilith technique is used primarily to create fine art limited print editions.

Copyright Notice: This document was generated on ArtRev.com on 1/22/2018 1:34:42 AM (U.S. Eastern Time Zone) - Copyright 2018 ArtRev.com, Inc. All Rights Reserved. The entire contents of this brochure is the property of ArtRev.com. You may not modify, copy, reproduce, republish, or distribute any portion of this brochure without the prior express written consent of ArtRev.com, Inc.

Authenticity & Price Match Guarantee: Shop with confidence. ArtRev.com is proud to be the first online art retailer to offer a "[lifetime authenticity guarantee](#)" with every limited edition or original work of art. Most limited edition and original artworks ship with a Certificate of Authenticity free of charge. This certificate is an official and valuable document that most insurance companies require in order to insure artworks against damage or theft. ArtRev.com will make every possible attempt to match or beat the advertised price of any major Internet competitor, art gallery, or frame shop; given that they are authorized to sell the item from the publisher or artist, and have the exact item in stock available for immediate sale.

Pricing & Availability: Due to the dynamic nature of the ArtRev.com website, prices and availability are subject to change without notice. ArtRev.com is not responsible for any pricing errors.