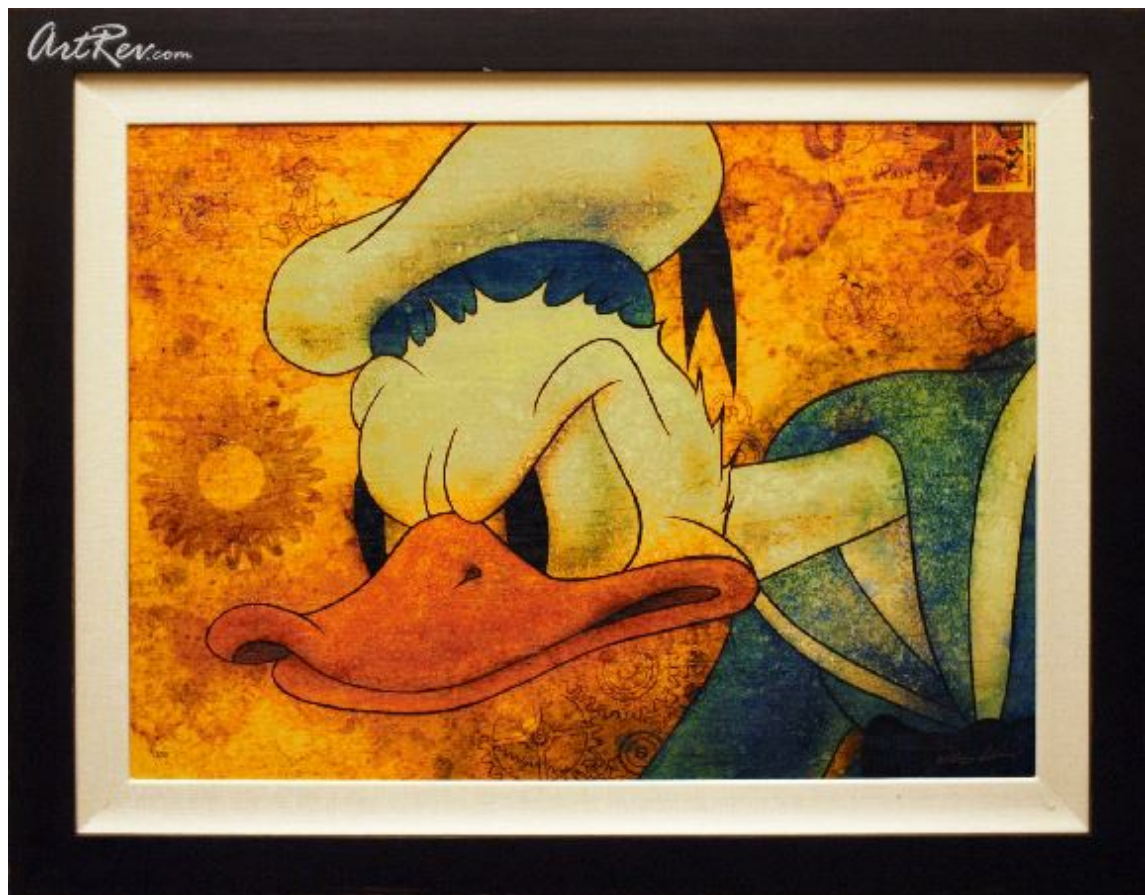


[Steamed](#) by [William Silvers](#) (On Sale!)
Giclee on Canvas - Main Subject: Animation & Cartoon





Item Number
2970022242

Retail Value
\$600

ArtRev.com Price
\$395
You Save 34% Off [-\$205.00]

Dimensions (As Shown)
37.5W x 29.5H Inches
95.25W x 74.93H cm

Medium
Giclee on Canvas

Edition
- Limited Edition of 250
- Hand-Signed 
- Numbered 

About William Silvers

William was born in New Bremen, OH. Inspired by his father, who was also an artist, he attended Bowling Green University where he received a BFA in Graphic Design at the age of 21. After working for various ad agencies in New York, William moved to Cleveland, OH in 1990. He briefly worked for an illustration studio, and then later co-founded Live Wire Studios, a full service art studio.

In 1995 William officially began his relationship with the Walt Disney Feature Animation. Through his nine years in animation, William worked as a background artist for such animated features as Mulan, Tarzan, Lilo & Stitch and Brother Bear. Both, Brother Bear and Tarzan have been critiqued by experts as having fabulous realistic backgrounds and nature scenes.

Although he is no longer a part of animation, William continues a strong relationship with the Walt Disney Company through contributions on special projects. In 2004 William worked as a matte painter for Industrial Light and Magic. It was there he contributed to the film Day After Tomorrow and Star Wars Episode 3.

William moved back to Florida and worked as Associate Art Director for EA Sports, Tiburon and helped develop titles such as the award winning game NCAA Football. William Silvers has a great passion for painting wildlife and ocean themes. He has won several awards including Region 1 at the 2005 Arts for Parks and Founder's Favorite at the 2001 Arts for the Parks annual contest in Wyoming. He has also been a member of Society of Animal Artists for the past five years and in 2005 had a painting accepted in the Society's 45th Annual Exhibition.

Giclee on Canvas

Giclee [zhee-clay] is a French term meaning a 'squirt or spray of ink'. This process utilizes sophisticated printing techniques whereby an industrial 8-Color to 12-Color inkjet printer sprays a staggering four million droplets of ink per second onto archival fine art paper or canvas. Requiring highly sophisticated printers and special pigment inks for an extremely wide color gamut, this blend of fine art and state-of-the-art technology produces exceptional fine art prints. Giclee prints are usually coated with a high quality gloss or varnish to minimize abrasion and increase resistance to image fading. Additionally, protective coatings protect expensive prints against moisture.

Giclee prints render deep, saturated colors and retain minute detail, subtle tints and blends. The quality of the giclee print rivals traditional silver-halide and gelatin printing processes and is commonly found in museums, art galleries, and photographic galleries.

The giclee printing process provides better color accuracy than other means of reproduction. The prints may be hand embellished by the artist using paint, ink and gold foil stamping for a mixed media effect. Giclee prints are sometimes mistakenly referred to as Iris prints, which are 4-Color ink-jet prints from a printer pioneered in the late 1970s by Iris Graphics.

Numerous examples of giclee prints can be found in New York City at the Metropolitan Museum, the Museum of Modern Art, and the Chelsea Galleries. Recent auctions of giclee prints have fetched as much as \$20,000.

Copyright Notice: This document was generated on ArtRev.com on 12/18/2017 12:17:46 AM (U.S. Eastern Time Zone) - Copyright 2017 ArtRev.com, Inc. All Rights Reserved. The entire contents of this brochure is the property of ArtRev.com. You may not modify, copy, reproduce, republish, or distribute any portion of this brochure without the prior express written consent of ArtRev.com, Inc.

Authenticity & Price Match Guarantee: Shop with confidence. ArtRev.com is proud to be the first online art retailer to offer a " [lifetime authenticity guarantee](#) " with every limited edition or original work of art. Most limited edition and original artworks ship with a Certificate of Authenticity free of charge. This certificate is an official and valuable document that most insurance companies require in order to insure artworks against damage or theft. ArtRev.com will make every possible attempt to match or beat the advertised price of any major Internet competitor, art gallery, or frame shop; given that they are authorized to sell the item from the publisher or artist, and have the exact item in stock available for immediate sale.

Pricing & Availability: Due to the dynamic nature of the ArtRev.com website, prices and availability are subject to change without notice. ArtRev.com is not responsible for any pricing errors.