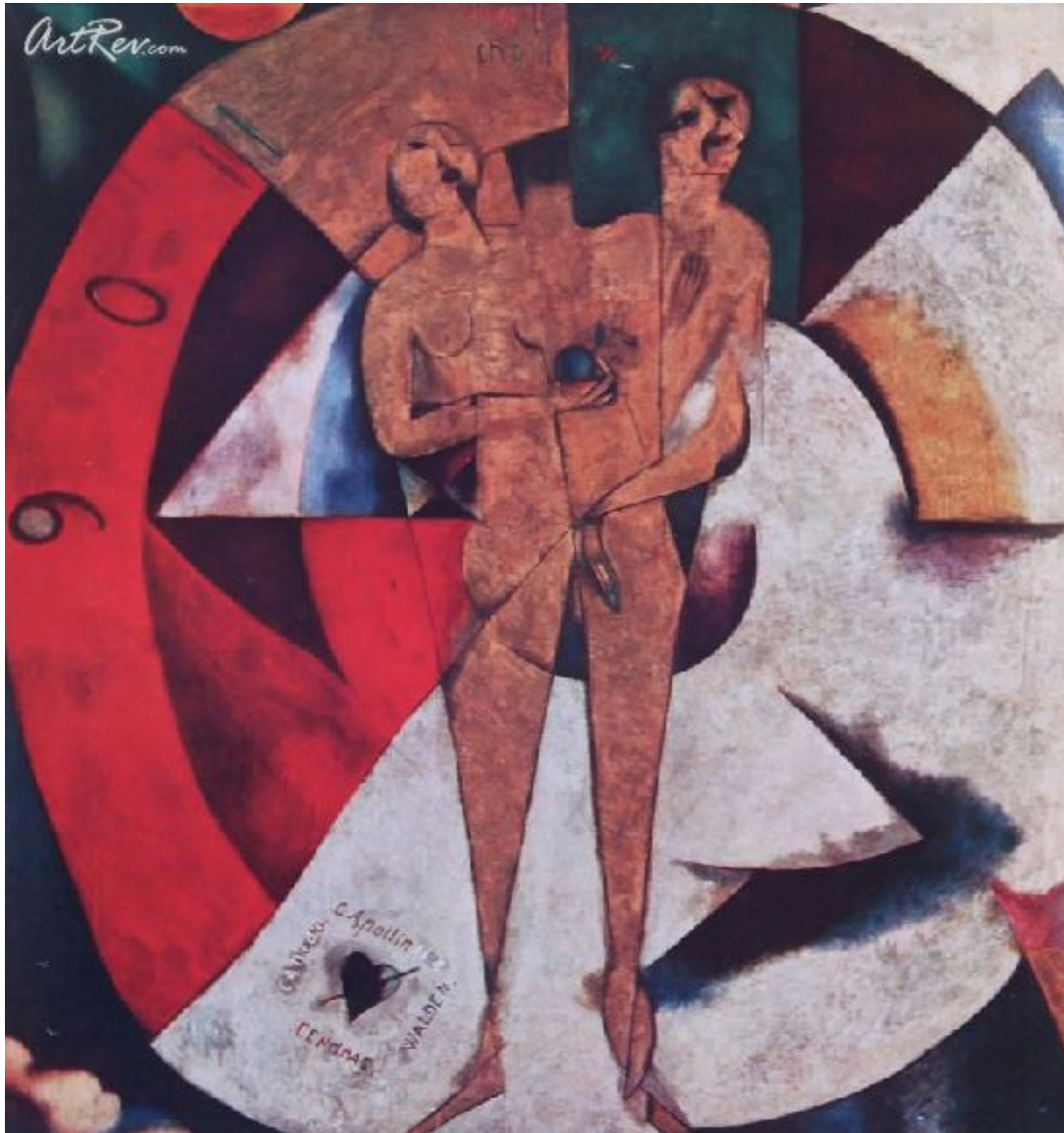


[Hommage a Apollinaire](#) by [Marc Chagall](#)
Offset Lithograph - Main Subject: Surrealism



Item Number
2839020932

Retail Value
\$200

ArtRev.com Price
\$99
You Save 50% Off [-\$101.00]

Dimensions (As Shown)
7W x 7.5H Inches
17.78W x 19.05H cm

Medium
Offset Lithograph

Custom Framing

- Design-it-yourself and Save!
- Museum-Quality Framing
- Up to 50% off Gallery Prices



Frame Your Artwork Online & Save!

Did you know that you can custom frame this artwork to your exact taste and specifications. Spark your own creativity and frame your artwork in as little as 2 minutes in three easy steps! Our Online frame shop offers museum quality framing services at prices up to 50% off your local gallery or frame shop. [See art collection](#) .

About Marc Chagall

Marc Chagall was a Russian-born French painter and designer, distinguished for his surrealist inventiveness. He is recognized as one of the most significant painters and graphic artists of the 20th century. His work treats subjects in a vein of humor and fantasy that draws deeply on the resources of the unconscious. Chagall's personal and unique imagery is often suffused with exquisite poetic inspiration.

Chagall was born July 7, 1887, in Vitsyebk, Russia (now in Belarus), and was educated in art in Saint Petersburg and, from 1910, in Paris, where he remained until 1914. Between 1915 and 1917 he lived in Saint Petersburg; after the Russian Revolution he was director of the Art Academy in Vitsyebk from 1918 to 1919 and was art director of the Moscow Jewish State Theater from 1919 to 1922. Chagall painted several murals in the theater lobby and executed the settings for numerous productions. In 1923, he moved to France, where he spent the rest of his life, except for a period of residence in the United States from 1941 to 1948. He died in St. Paul de Vence, France, on March 28, 1985.

Chagall's distinctive use of color and form is derived partly from Russian expressionism and was influenced decisively by French cubism. Crystallizing his style early, as in *Candles in the Dark* (1908, artist's collection), he later developed subtle variations. His numerous works represent characteristically vivid recollections of Russian-Jewish village scenes, as in *I and the Village* (1911, Museum of Modern Art, New York City), and incidents in his private life, as in the print series *Mein Leben* (German for "My Life," 1922), in addition to treatments of Jewish subjects, of which *The Praying Jew* (1914, Art Institute of Chicago) is one. His works combine recollection with folklore and fantasy. Biblical themes characterize a series of etchings executed between 1925 and 1939, illustrating the Old Testament, and the 12 stained-glass windows in the Hadassah Hospital of the Hadassah-Hebrew University Medical Center in Jerusalem (1962).

In 1973 Musée National Message Biblique Marc Chagall (National Museum of the Marc Chagall Biblical Message) was opened in Nice, France, to house hundreds of his biblical works. Chagall executed many prints illustrating literary classics. A canvas completed in 1964 covers the ceiling of the Opéra in Paris, and two large murals (1966) hang in the lobby of the Metropolitan Opera House in New York City.

Offset Lithograph

The offset lithography process works by first transferring an image photographically to thin metal, paper, or plastic printing plates. Unlike other forms of printing, the image on the printing plate is not recessed or raised. Rollers apply oil-based ink and water to the plates. Since oil and water don't mix, the oil-based ink won't adhere to the non-image areas. Only the inked image portion is then transferred to a rubber blanket (cylinder) that then transfers the image onto the paper as it passes between it and another cylinder beneath the paper.

The term offset refers to the fact that the image isn't printed directly to the paper from the plates, but is offset or transferred to another surface that then makes contact with the paper.

Copyright Notice: This document was generated on ArtRev.com on 6/28/2017 12:03:32 PM (U.S. Eastern Time Zone) - Copyright 2017 ArtRev.com, Inc. All Rights Reserved. The entire contents of this brochure is the property of ArtRev.com. You may not modify, copy, reproduce, republish, or distribute any portion of this brochure without the prior express written consent of ArtRev.com, Inc.

Authenticity & Price Match Guarantee: Shop with confidence. ArtRev.com is proud to be the first online art retailer to offer a "[lifetime authenticity guarantee](#)" with every limited edition or original work of art. Most limited edition and original artworks ship with a Certificate of Authenticity free of charge. This certificate is an official and valuable document that most insurance companies require in order to insure artworks against damage or theft. ArtRev.com will make every possible attempt to match or beat the advertised price of any major Internet competitor, art gallery, or frame shop; given that they are authorized to sell the item from the publisher or artist, and have the exact item in stock available for immediate sale.

Pricing & Availability: Due to the dynamic nature of the ArtRev.com website, prices and availability are subject to change without notice. ArtRev.com is not responsible for any pricing errors.