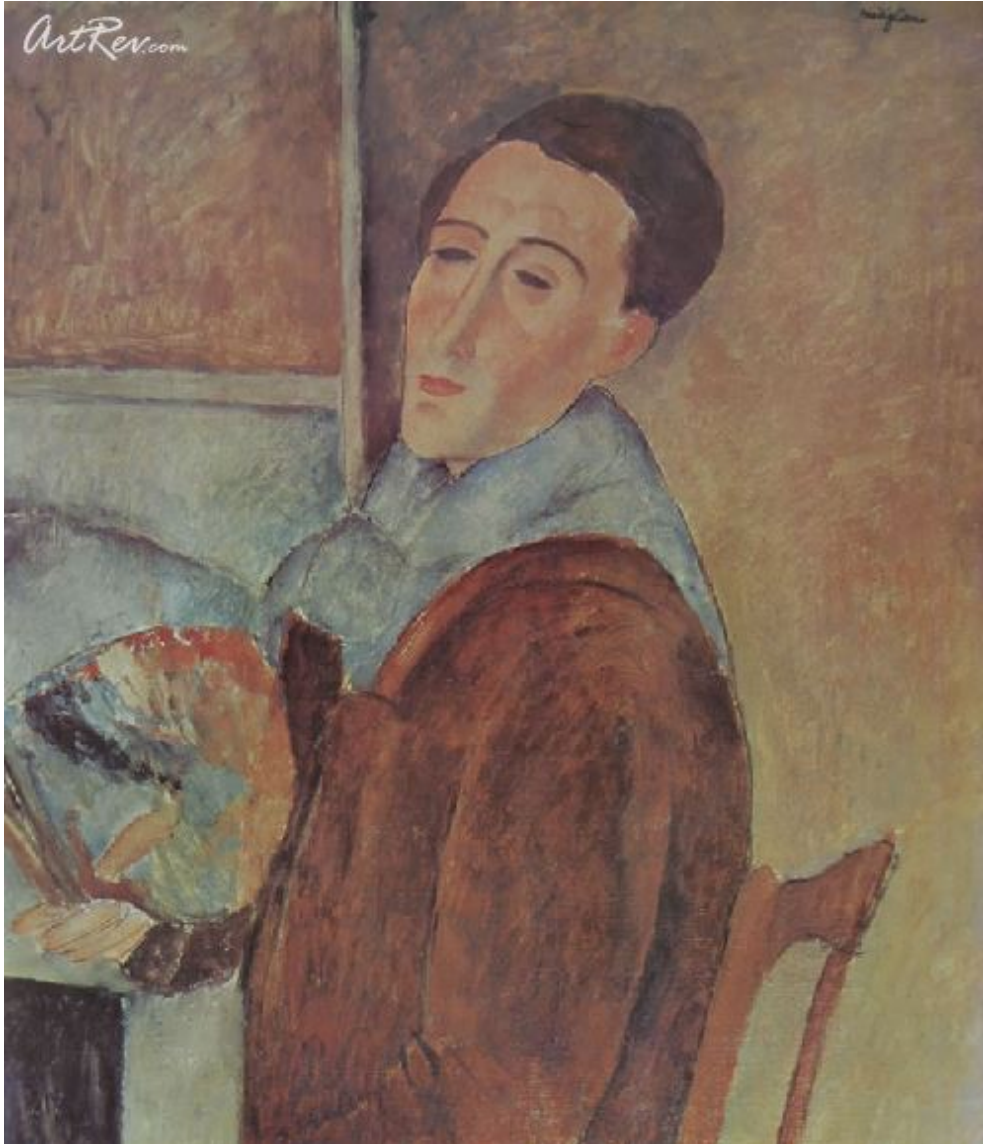


[Self-Portrait](#) by [Amedeo Modigliani](#)

Original Lithographic Bookplate - Main Subject: Portrait



**Item Number**

2743419976

**Retail Value**

\$110

**ArtRev.com Price**

\$75

You Save 32% Off [-\$35.00]

**Dimensions (As Shown)**

9.25W x 10.75H Inches

23.5W x 27.3H cm

**Medium**

Original Lithographic Bookplate

**Custom Framing**

- Design-it-yourself and Save!
- Museum-Quality Framing
- Up to 50% off Gallery Prices



**Frame Your Artwork Online & Save!**

Did you know that you can custom frame this artwork to your exact taste and specifications. Spark your own creativity and frame your artwork in as little as 2 minutes in three easy steps! Our Online frame shop offers museum quality framing services at prices up to 50% off your local gallery or frame shop. [See art collection](#) .

**About Amedeo Modigliani**

Amedeo Modigliani was born July 12, 1884, in Livorno, Italy. The serious illnesses from which he suffered during his childhood persisted throughout his life. At age 14 he began to study painting. He first experimented with sculpture during the summer of 1902 and the following year attended the Reale Istituto di Belle Arti in Venice. Early in 1906 Modigliani went to Paris, where he settled in Montmartre and attended the Académie Colarossi. His early work was influenced by Paul Cézanne, Paul Gauguin, Théophile Alexandre Steinlen, and Henri de Toulouse-Lautrec. In the fall of 1907 he met his first patron, Dr. Paul Alexandre, who purchased works from him before World War I. Modigliani exhibited in the Salon d'Automne in 1907 and 1912 and in the Salon des Indépendants in 1908, 1910 and 1911.

In 1909 Modigliani met Constantin Brancusi when both artists were living in Montparnasse. From 1909 to 1914 he concentrated on sculpture, but he also drew and painted to a certain extent. However, the majority of his paintings date from 1916 to 1919. Modigliani's circle of friends first consisted of Max Jacob, Jacques Lipchitz, and the Portuguese painter Amadeo de Souza-Cardoso. Later he associated with Tsuguharu Foujita, Moïse Kisling, Jules Pascin, the Sitwells, Chaim Soutine, and Maurice Utrillo. His dealers were Paul Guillaume (1914-16) and Leopold Zborowski (by 1917). The only solo show given the artist during his lifetime took place at the Galerie Berthe Weill in December 1917.

In March 1917 Modigliani met Jeanne Hébuterne, who became his companion and model. From March or April 1918 until May 31, 1919, they lived in the south of France, in both Nice and Cagnes. Modigliani died on January 24, 1920, in Paris.

## Original Lithographic Bookplate

Sorry. No information about this medium is available.

---

**Copyright Notice:** This document was generated on [ArtRev.com](https://www.artrev.com) on 9/23/2017 7:47:26 PM (U.S. Eastern Time Zone) - Copyright 2017 ArtRev.com, Inc. All Rights Reserved. The entire contents of this brochure is the property of ArtRev.com. You may not modify, copy, reproduce, republish, or distribute any portion of this brochure without the prior express written consent of ArtRev.com, Inc.

**Authenticity & Price Match Guarantee:** Shop with confidence. ArtRev.com is proud to be the first online art retailer to offer a "[lifetime authenticity guarantee](#)" with every limited edition or original work of art. Most limited edition and original artworks ship with a Certificate of Authenticity free of charge. This certificate is an official and valuable document that most insurance companies require in order to insure artworks against damage or theft. ArtRev.com will make every possible attempt to match or beat the advertised price of any major Internet competitor, art gallery, or frame shop; given that they are authorized to sell the item from the publisher or artist, and have the exact item in stock available for immediate sale.

**Pricing & Availability:** Due to the dynamic nature of the ArtRev.com website, prices and availability are subject to change without notice. ArtRev.com is not responsible for any pricing errors.