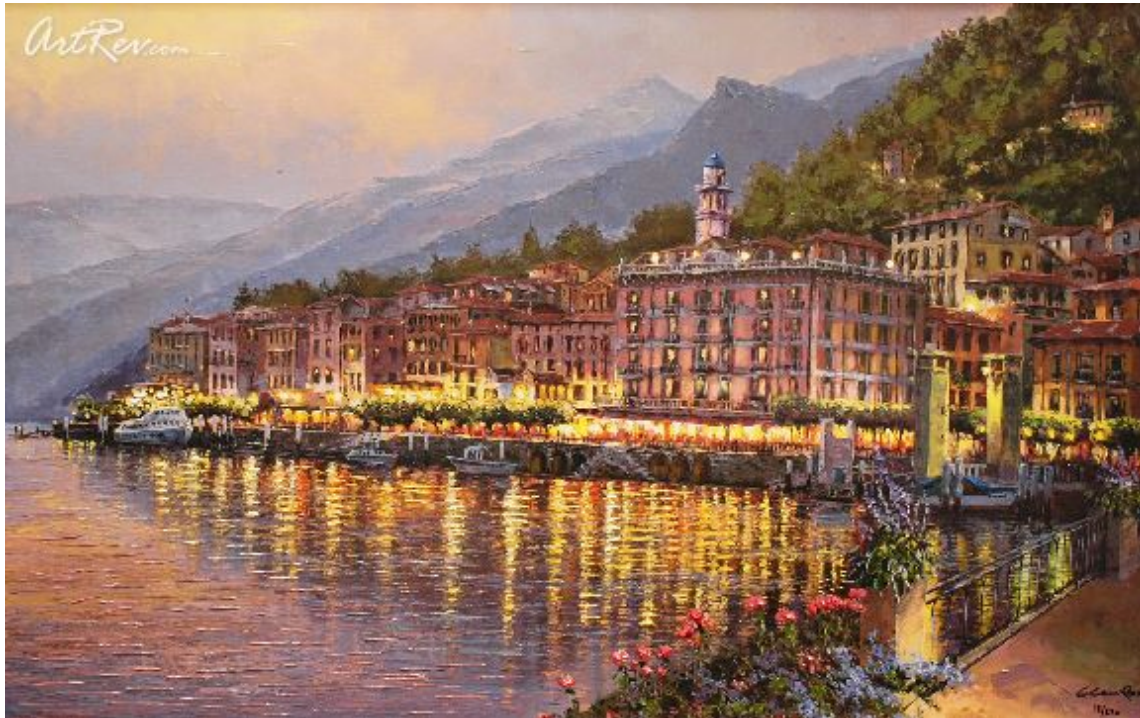


[Bellagio Twilight](#) by [Sung Sam Park](#)

Hand Embellished Giclee on Canvas - Main Subject: Landscape



Item Number

2551418055

Retail Value

\$1,350

ArtRev.com Price

\$1,180

You Save 13% Off [-\$170.00]

Dimensions (As Shown)

32W x 20H x 0.5D Inches

81.28W x 50.8H x 1.27D cm

Medium

Hand Embellished Giclee on Canvas

Edition

- Limited Edition of 230
- Hand-Signed 
- Numbered 

Custom Framing

- Design-it-yourself and Save!
- Museum-Quality Framing
- Up to 50% off Gallery Prices



Frame Your Artwork Online & Save!

Did you know that you can custom frame this artwork to your exact taste and specifications. Spark your own creativity and frame your artwork in as little as 2 minutes in three easy steps! Our Online frame shop offers museum quality framing services at prices up to 50% off your local gallery or frame shop. [See art collection](#) .

About Sung Sam Park

Born in 1949 in Seoul, Korea, Sung Sam Park began painting at the age of twelve. Inspired by the Impressionists, Park studied and evolved his vision of impressionism and hyper-realism to his own style of Neo-Impressionism. His images capture architectural and natural beauty with charm and are in the collections of Michael Dukakis, The President of Cyprus and the Hyundai Corporation.

His talent and teaching abilities were quickly recognized as a child and by the age of thirteen, while still a junior high school student, Park taught at the local high school.

Early on, Park attracted the attention of prominent artists and heads of state. Byen Si-Jin, former university president of Jo-Joo Island, was his private art teacher and mentor. The former president of South Korea, Yoon Bo-Sun, personally awarded him many First Places in the national competitions of the Mok-Woo Art Society. Park is still the youngest person ever to have competed in

these competitions. After graduating from Jung Ang University in 1973, Park traveled to France, where he studied painting and lived with other young artists in Paris. His artistic style today clearly reflects the inspiration of the French Impressionists.

Sam Park returned to Korea briefly in 1984 to participate in the national Olympic - sponsored art competition for the upcoming 1988 Seoul Olympic Games. With more than two thousand entrants in the competition, park won and received a Gold Medal. Following the Olympics, Park's painting was purchased by the Hyundai Corporation for permanent display at their corporate headquarters. In 1986, Park became a member of the jury of Heart and Mind Artists Association of Korea, which is the organization that assesses all artwork presented for juried competition in that nation.

Park then returned to Europe, where he lived for the next fourteen years, primarily in France, but also in Greece and on Cyprus. While living on Cyprus, Park was commissioned by the President of Cyprus to paint the First Lady's portrait. This and five other paintings by Park are currently displayed in the collection in the Presidential Palace. A painting that Park did while in Greece was of Michael Dukakis' birthplace, and was later purchased by the former Governor of Massachusetts and presidential hopeful.

He established himself in several European galleries, and continues to exhibit in many of them today. His works were written about in a variety of newspapers and magazines, including the European Travel Press and Euroko, a Korean magazine in Europe.

Park came to the USA in 1994, where he continues to live on the coast of Southern California. He has exhibited in several American galleries and in March 1996, he first exhibited at the New York Art Expo.

Selected One-Person Exhibitions

2000 - The Gallery, Naples, Florida
2000 - Atlas Gallery, Chicago, IL
2000 - Magni Frame Gallery, Willowdale, Canada
2000 - Hanson Gallery, Sausalito, CA
2000 - Kenneth Behm Gallery, Bellevue, WA
2000 - Gallerie Hawaii, Maui, HI
2000 - Hanson Gallery, Carmel, CA
2000 - Gallery One, Denver, CO
1999 - Hanson Gallery, Sausalito, CA
1999 - Hanson Gallery, Carmel, CA
1999 - Atlas Gallery, Chicago, IL
1999 - Ventana Gallery, Sacramento, CA
1999 - Village Gallery, El Toro, CA
1999 - Whitbread, Coppell, TX
1997 Gallery Vincent (Cap D'Agd, France)
1997 Peter's Gallery (Cyprus)
1997 Gallery Eclipse (Rancho Santa Fe, California, USA)
1995-1997 Gallery Cosmopolitan (La Jolla, California, USA)
1995 Gallery Vincent (Ballery' France)
1994 Gallery Arete, (Athens, Greece)
1987-1990 GalleryArete (Athens, Greece)
1988 Gallery Vincent (Nice, France)
1985-1988 Hotel ApollonPalace (Athens, Greece)
1985-1988 Hotel Hilton (Cyprus)
1985 Peter's Gallery (Cyprus)

Selected Group Exhibitions and Competitions

2000 - New York Art Expo
1999 - New York Art Expo
1998 - NewYork ArtExpo
1996 - 1998 Gallery Chetkins (Red Bank, New Jersey, USA)
1996 - Gallery Juarez (Laguna Beach, California, USA)

1996 - New York Art Expo, Los Angeles Art Expo
1995 - Gallery Simic (Carmel, California, USA)
1993 - Gallery Carnon (France)
1993 - Gallery Riche (Montepellier, France)
1989 - International Art Exhibition (Monte Carlo, France)
1984 - Grand Prize, Olympic Memorial Fine Art Contest
1970 -1984 Oriental Fine Art Exhibition
1983 - Special Prize, Seoul Art Contest
1982 - Bronze Prize, Le Salon Contest (France)

Selected Collections

1986 - Collection of Michael Dukakis (Presidential Candidate)
1985 - Collection of First Lady of Cyprus, Mrs. Kipriano (Presidential Palace, Cypn~s)
1984 - Hyundai Corporation Headquarter Display
1984 - Olympic Memorial Museum Display

"Baudelaire said that only those artists who follow their dreams faithfully will produce a masterpiece. A painter of florals and scenes, S. Sam Park allows us to enter his world of imagination and invites us to partake of his joy of painting. This new exhibition enchants us with its quality and diversity.

A painter of good humor, luminosity and sweetness, S. Sam Park has us discover the face of his talents through his florals, with their subtle harmonies, charm and freshness. A painter-poet, S. Sam Park translates emotion and sincerity through his proper interpretation of nature and beauty, and, in his personal style, reveals the soul of a true artist. " Jean-Pierre Seurat, Grandson of George Seurat.

Hand Embellished Giclee on Canvas

Giclee [zhee-clay] is a French term meaning a 'squirt or spray of ink'. This process utilizes sophisticated printing techniques whereby an industrial 8-Color to 12-Color inkjet printer sprays a staggering four million droplets of ink per second onto archival fine art paper or canvas. Requiring highly sophisticated printers and special pigment inks for an extremely wide color gamut, this blend of fine art and state-of-the-art technology produces exceptional fine art prints. Giclee prints are usually coated with a high quality gloss or varnish to minimize abrasion and increase resistance to image fading. Additionally, protective coatings protect expensive prints against moisture.

Giclee prints render deep, saturated colors and retain minute detail, subtle tints and blends. The quality of the giclee print rivals traditional silver-halide and gelatin printing processes and is commonly found in museums, art galleries, and photographic galleries.

The giclee printing process provides better color accuracy than other means of reproduction. The prints may be hand embellished by the artist using paint, ink and gold foil stamping for a mixed media effect. Giclee prints are sometimes mistakenly referred to as Iris prints, which are 4-Color ink-jet prints from a printer pioneered in the late 1970s by Iris Graphics.

Numerous examples of giclee prints can be found in New York City at the Metropolitan Museum, the Museum of Modern Art, and the Chelsea Galleries. Recent auctions of giclee prints have fetched as much as \$20,000.

Copyright Notice: This document was generated on ArtRev.com on 12/11/2017 4:25:21 AM (U.S. Eastern Time Zone) - Copyright 2017 ArtRev.com, Inc. All Rights Reserved. The entire contents of this brochure is the property of ArtRev.com. You may not modify, copy, reproduce, republish, or distribute any portion of this brochure without the prior express written consent of ArtRev.com, Inc.

Authenticity & Price Match Guarantee: Shop with confidence. ArtRev.com is proud to be the first online art retailer to offer a " [lifetime authenticity guarantee](#) " with every limited edition or original work of art. Most limited edition and original artworks ship with a Certificate of Authenticity free of charge. This certificate is an official and valuable document that most insurance companies require in order to insure artworks against damage or theft. ArtRev.com will make every possible

attempt to match or beat the advertised price of any major Internet competitor, art gallery, or frame shop; given that they are authorized to sell the item from the publisher or artist, and have the exact item in stock available for immediate sale.

Pricing & Availability: Due to the dynamic nature of the ArtRev.com website, prices and availability are subject to change without notice. ArtRev.com is not responsible for any pricing errors.