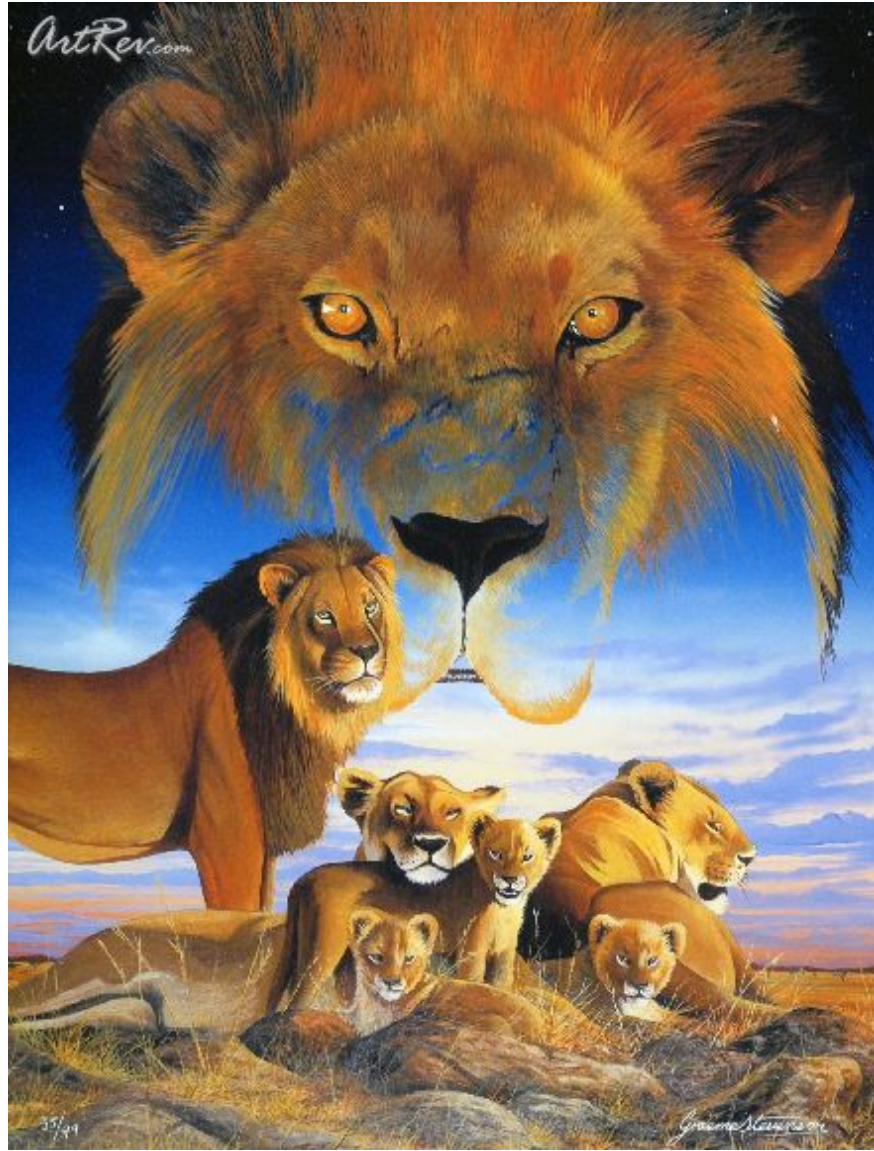


[Masai Morning](#) by [Graeme Stevenson](#) (On Sale!)

Giclee on Paper - Main Subject: Animals & Birds

**Item Number**

2446017002

Retail Value

\$300

ArtRev.com Price

\$160

You Save 47% Off [-\$140.00]

Dimensions (As Shown)

20W x 26H Inches


50.8W x 66.04H cm


Medium

Giclee on Paper

Edition

- Limited Edition of 99

- Hand-Signed 

- Numbered 

Custom Framing

- Design-it-yourself and Save!
- Museum-Quality Framing
- Up to 50% off Gallery Prices



Frame Your Artwork Online & Save!

Did you know that you can custom frame this artwork to your exact taste and specifications. Spark your own creativity and frame your artwork in as little as 2 minutes in three easy steps! Our Online frame shop offers museum quality framing services at prices up to 50% off your local gallery or frame shop. [See art collection](#) .

About Graeme Stevenson

Born June 29th, 1958 in New South Wales, Australia, Graeme Stevenson began painting and studying animals and even at a young age had a tremendous fascination with the world around him. He began breeding Australian Parrots, and in his teen years

took up the ancient sport of falconry. As his interest in art began to grow, he used the birds that surrounded him-his pets- as subjects for his paintings. After obtaining his pilots license, he began to explore the vast areas of Australia, photographing, sketching, and eventually painting the exotic animals of this land.

His reputation as an artist began to grow and his one-man and two-man exhibitions were greatly successful. Graeme then began traveling to other parts of the world to study his subjects and to display his work. Africa, India, Malaysia, Indonesia, Japan, Europe, U.K., U.S.A., Mexico, Canada, Alaska and the Middle East were some of the places to which he ventured, receiving offers from publishers who produced his works in limited edition.

In 1988 he was commissioned to produce all of the paintings for the book The Atlas of Parrots, one of the largest editions of its size in the world. Graeme eventually decided to turn his imagination and his art ability in a new direction.

Now living permanently in the United States, he is able to study the many varied animals of America and to produce a series of paintings that enable him to explore different ideas and to present work that also has the ability to tell a story of the subjects that he paints. He also paints fantasy and romantic scenes of mother and child.

Giclee on Paper

Giclee [zhee-clay] is a French term meaning a 'squirt or spray of ink'. This process utilizes sophisticated printing techniques whereby an industrial 8-Color to 12-Color inkjet printer sprays a staggering four million droplets of ink per second onto archival fine art paper or canvas. Requiring highly sophisticated printers and special pigment inks for an extremely wide color gamut, this blend of fine art and state-of-the-art technology produces exceptional fine art prints. Giclee prints are usually coated with a high quality gloss or varnish to minimize abrasion and increase resistance to image fading. Additionally, protective coatings protect expensive prints against moisture.

Giclee prints render deep, saturated colors and retain minute detail, subtle tints and blends. The quality of the giclee print rivals traditional silver-halide and gelatin printing processes and is commonly found in museums, art galleries, and photographic galleries.

The giclee printing process provides better color accuracy than other means of reproduction. The prints may be hand embellished by the artist using paint, ink and gold foil stamping for a mixed media effect. Giclee prints are sometimes mistakenly referred to as Iris prints, which are 4-Color ink-jet prints from a printer pioneered in the late 1970s by Iris Graphics.

Numerous examples of giclee prints can be found in New York City at the Metropolitan Museum, the Museum of Modern Art, and the Chelsea Galleries. Recent auctions of giclee prints have fetched as much as \$20,000.

Copyright Notice: This document was generated on ArtRev.com on 10/20/2017 3:35:41 PM (U.S. Eastern Time Zone) - Copyright 2017 ArtRev.com, Inc. All Rights Reserved. The entire contents of this brochure is the property of ArtRev.com. You may not modify, copy, reproduce, republish, or distribute any portion of this brochure without the prior express written consent of ArtRev.com, Inc.

Authenticity & Price Match Guarantee: Shop with confidence. ArtRev.com is proud to be the first online art retailer to offer a "[lifetime authenticity guarantee](#)" with every limited edition or original work of art. Most limited edition and original artworks ship with a Certificate of Authenticity free of charge. This certificate is an official and valuable document that most insurance companies require in order to insure artworks against damage or theft. ArtRev.com will make every possible attempt to match or beat the advertised price of any major Internet competitor, art gallery, or frame shop; given that they are authorized to sell the item from the publisher or artist, and have the exact item in stock available for immediate sale.

Pricing & Availability: Due to the dynamic nature of the ArtRev.com website, prices and availability are subject to change without notice. ArtRev.com is not responsible for any pricing errors.