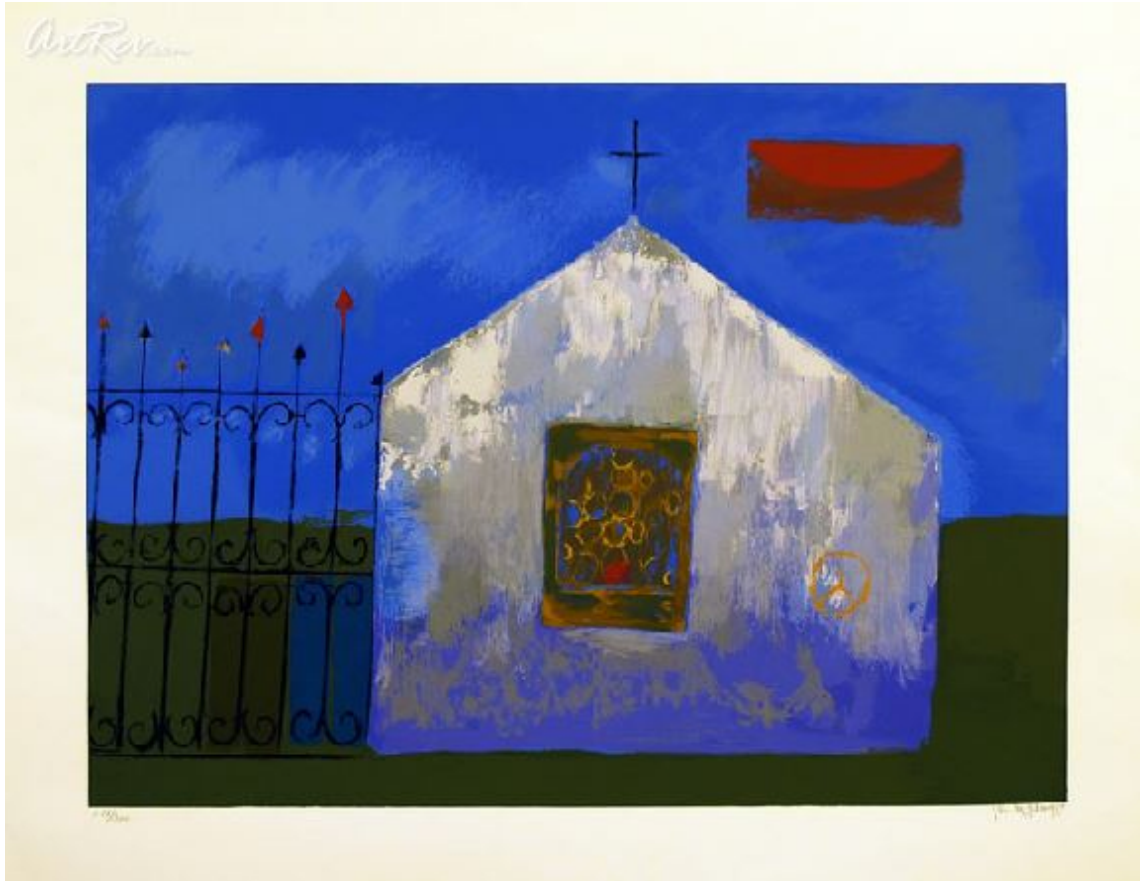


[Eventide](#) by [Remo Farruggio](#) (On Sale!)

Lithograph on Paper - Main Subject: Abstract



Item Number

2412816670

Retail Value

\$200

ArtRev.com Price

\$95

You Save 52% Off [-\$105.00]

Dimensions (As Shown)

27.75W x 20.5H Inches

70.48W x 52.07H cm

Medium

Lithograph on Paper

Edition

- Limited Edition of 300
- Hand-Signed 
- Numbered 

Custom Framing

- Design-it-yourself and Save!
- Museum-Quality Framing
- Up to 50% off Gallery Prices



Frame Your Artwork Online & Save!

Did you know that you can custom frame this artwork to your exact taste and specifications. Spark your own creativity and frame your artwork in as little as 2 minutes in three easy steps! Our Online frame shop offers museum quality framing services at prices up to 50% off your local gallery or frame shop. [See art collection](#) .

About Remo Farruggio

Remo Farruggio is first a colorist and then a painter. For it is the color that inspires the painting. It then takes form with its fundamental life and vitality stemming from an inner fountain of inspiration which comes from a primary source. In the case of Farruggio it is the place of his birth, Italy, to which he has returned time and again throughout his life. Better yet, Sicily, and the lovely city of Palermo, filled with Baroque buildings and palaces, enough to create artists on the spot, if one is not already so talented, as in the case of Remo Farruggio.

When one has seen the atmospheric changes, the luminous light, and the intensities of tonalities one finds in Sicily, it is then easy to understand why Farruggio is the magnificent colorist he is. Besides the light, the land itself, with its mountainous terrains and lush valleys, provides an inspiration for all shapes and forms which again have inspired the artist. His sensitivity adds another dimension to his work. Farruggio has the ability to take all this and orchestrate them into a final concept, creating in his work a

symphony of mood and enchantment.

From 1957 through 1967, he was involved with painting nudes in heavy rounded forms, sensuously posing them to reveal not only the figure but a blending of form, color, and an inner quality of repose, creating delectations in paint. In some the edges were purposely blurred, giving an extra impression of softness and sexuality. There is a Baroque quality about them, which easily relate to the rounded angels and beautifully formed Ailanthus leaves which decorate so many of the buildings found in Sicily. Some of his paintings during this period played with Mire like shapes, exuding joy and caprice, while others were of abstract landscapes, deserts and mountains, usually moving from a focal point of interest, either through a particular form or color. His still lifes were magnificent arrangements of cubist shapes, again treated to the living vitality of his intense tonalities.

Lithograph on Paper

This printing technique uses a planographic process in which prints are pulled on a special press from a flat stone or metal surface. The surface has been chemically treated so that ink sticks only to the design areas, and is repelled by the non-image areas. Lithography was invented in Germany in 1798. The early history of lithography is dominated by great French artists such as Daumier and Delacroix, and later by Degas, Toulouse-Lautrec, Picasso, Braque and Miro.

Based on the principle that oil and water repel, a Lithograph is created when an artist produces an oil-based or pen image on a stone or piece of metal. This surface is then moistened and covered with an oil-based ink. The resulting chemical reaction between the oil and water drives away the ink on the surface except where the drawing was first done. Fine quality paper is then placed against the surface and a lithographic press is used to create the print. Modern technology and processes have provided artists with many unique methods with which to create magnificent lithographs. In the 1890s color lithography became enormously popular with French artists, Toulouse-Lautrec most notably of all, and by 1900 the medium in both color and monotone was an accepted part of printmaking, although France and the US have used it more than other countries. George Bellows, Alphonse Mucha, Pablo Picasso, Jasper Johns, David Hockney and Robert Rauschenberg are a few of the artists who have produced most of their prints in the medium.

As a special form of lithography, the Serilith process is sometimes used. Serilith are mixed media original prints created in a process where an artist uses the lithograph and serigraph process. The separations for both processes are hand drawn by the artist. The serilith technique is used primarily to create fine art limited print editions.

Copyright Notice: This document was generated on ArtRev.com on 9/20/2017 7:47:59 PM (U.S. Eastern Time Zone) - Copyright 2017 ArtRev.com, Inc. All Rights Reserved. The entire contents of this brochure is the property of ArtRev.com. You may not modify, copy, reproduce, republish, or distribute any portion of this brochure without the prior express written consent of ArtRev.com, Inc.

Authenticity & Price Match Guarantee: Shop with confidence. ArtRev.com is proud to be the first online art retailer to offer a "[lifetime authenticity guarantee](#)" with every limited edition or original work of art. Most limited edition and original artworks ship with a Certificate of Authenticity free of charge. This certificate is an official and valuable document that most insurance companies require in order to insure artworks against damage or theft. ArtRev.com will make every possible attempt to match or beat the advertised price of any major Internet competitor, art gallery, or frame shop; given that they are authorized to sell the item from the publisher or artist, and have the exact item in stock available for immediate sale.

Pricing & Availability: Due to the dynamic nature of the ArtRev.com website, prices and availability are subject to change without notice. ArtRev.com is not responsible for any pricing errors.