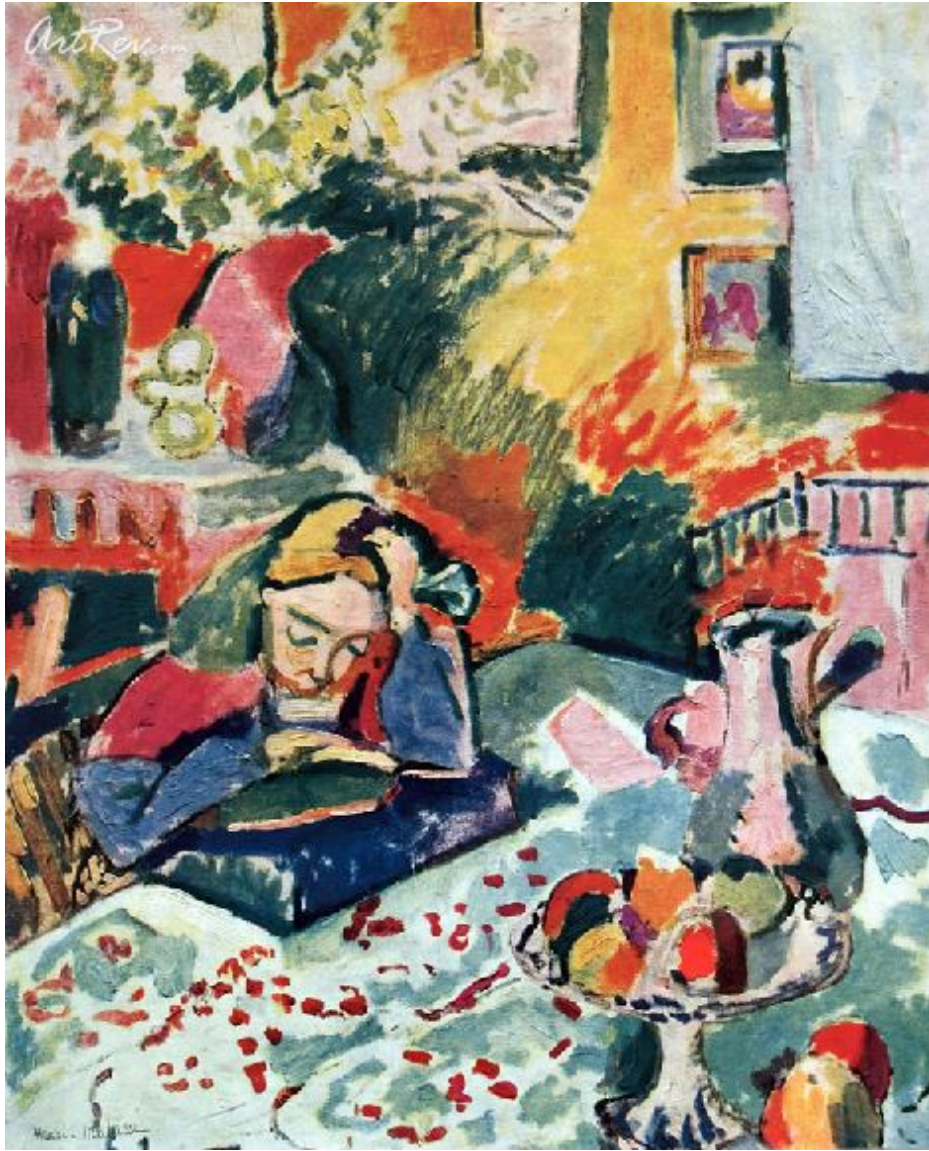


[Interieur a la Fillette](#) by [Henri Matisse](#) (On Sale!)

Original Lithographic Bookplate - Main Subject: Abstract



Item Number

2075913301

Retail Value

\$130

ArtRev.com Price

\$30

You Save 77% Off [-\$100.00]

Dimensions (As Shown)

8.75W x 10.5H Inches

22.22W x 26.67H cm

Medium

Original Lithographic Bookplate

Custom Framing

- Design-it-yourself and Save!
- Museum-Quality Framing
- Up to 50% off Gallery Prices



Frame Your Artwork Online & Save!

Did you know that you can custom frame this artwork to your exact taste and specifications. Spark your own creativity and frame your artwork in as little as 2 minutes in three easy steps! Our Online frame shop offers museum quality framing services at prices up to 50% off your local gallery or frame shop. [See art collection](#) .

About Henri Matisse

Henri Matisse (December 31, 1869 – November 3, 1954) was a French artist, noted for his use of color and his fluid, brilliant and original draughtsmanship. As a draughtsman, printmaker, and sculptor, but principally as a painter, Matisse is one of the

best-known artists of the twentieth century.

Born Henri-Émile-Benoît Matisse in Le Cateau-Cambrésis, Nord-Pas-de-Calais, France, he grew up in Bohain-en-Vermandois. In 1887 he went to Paris to study law, working as a court administrator in Le Cateau-Cambrésis after gaining his qualification. He first started painting during a period of convalescence following an attack of appendicitis, and discovered "a kind of paradise" as he later described it. In 1891 he returned to Paris to study art at the Académie Julian and became a student of William-Adolphe Bouguereau and Gustave Moreau. Influenced by the works of the post-Impressionists Paul Cézanne, Gauguin, Van Gogh and Paul Signac, and also by Japanese art, he made color a crucial element of his paintings from the first. Many of his paintings from 1899 to 1905 make use of a pointillist technique adopted from Signac.

His first exhibition was in 1901 and his first solo exhibition in 1904. His fondness for bright and expressive color became more pronounced after he moved southwards in 1905 to work with André Derain and spent time on the French Riviera. The paintings of this period are characterized by flat shapes and controlled lines, with expression dominant over detail. He became known as a leader of the Fauves (wild beasts), a group of artists which also included Derain, Georges Braque, Raoul Dufy and Maurice Vlaminck. The decline of the Fauvist movement after 1906 did nothing to affect the rise of Matisse; many of his finest works were created between 1906 and 1917 when he was an active part of the great gathering of artistic talent in Montparnasse. Matisse had a long association with the art collector Sergei Shchukin. He made one of his major works *La Danse* specially for Shchukin.

He was a friend as well as rival of his younger contemporary Picasso, to whom he is often compared. A key difference between them is that Matisse drew and painted from nature, while Picasso was much more inclined to work from imagination. The subjects painted most frequently by both artists were women and still lifes, with Matisse more likely to place his figures in fully realized interiors.

Matisse lived in Cimiez on the French Riviera, now a suburb of the city of Nice, from 1917 until his death in 1954. His work of the decade or so following this relocation shows a relaxation and a softening of his approach. This "return to order" is characteristic of much art of the post-World War I period, and can be compared with the neoclassicism of Picasso and Stravinsky, and the return to traditionalism of Derain. After 1930 a new rigor and bolder simplification appear. In 1941 he was diagnosed with cancer and, following surgery, he started using a wheelchair. Matisse did not allow this setback to halt his work, and with the aid of assistants he set about creating cut paper collages, often on a large scale, called *gouaches découpés*. His *Blue Nudes* series feature prime examples of this technique; these demonstrate the ability to bring his eye for color and geometry to a new medium of utter simplicity, but with playful and delightful power.

The first painting of Matisse acquired by a public collection was "Still Life with Geranium" in 1910, today exhibited in the Pinakothek der Moderne.

Today, a Matisse painting can fetch as much as US \$17 million. In 2002, a Matisse sculpture, "Reclining Nude I," sold for US \$9.2 million, a record for a sculpture by the artist.

Original Lithographic Bookplate

Sorry. No information about this medium is available.

Copyright Notice: This document was generated on ArtRev.com on 12/14/2017 5:18:49 AM (U.S. Eastern Time Zone) - Copyright 2017 ArtRev.com, Inc. All Rights Reserved. The entire contents of this brochure is the property of ArtRev.com. You may not modify, copy, reproduce, republish, or distribute any portion of this brochure without the prior express written consent of ArtRev.com, Inc.

Authenticity & Price Match Guarantee: Shop with confidence. ArtRev.com is proud to be the first online art retailer to offer a " [lifetime authenticity guarantee](#) " with every limited edition or original work of art. Most limited edition and original artworks ship with a Certificate of Authenticity free of charge. This certificate is an official and valuable document that most insurance companies require in order to insure artworks against damage or theft. ArtRev.com will make every possible attempt to match or beat the advertised price of any major Internet competitor, art gallery, or frame shop; given that they are authorized to sell the item from the publisher or artist, and have the exact item in stock available for immediate sale.

Pricing & Availability: Due to the dynamic nature of the ArtRev.com website, prices and availability are subject to change without notice. ArtRev.com is not responsible for any pricing errors.