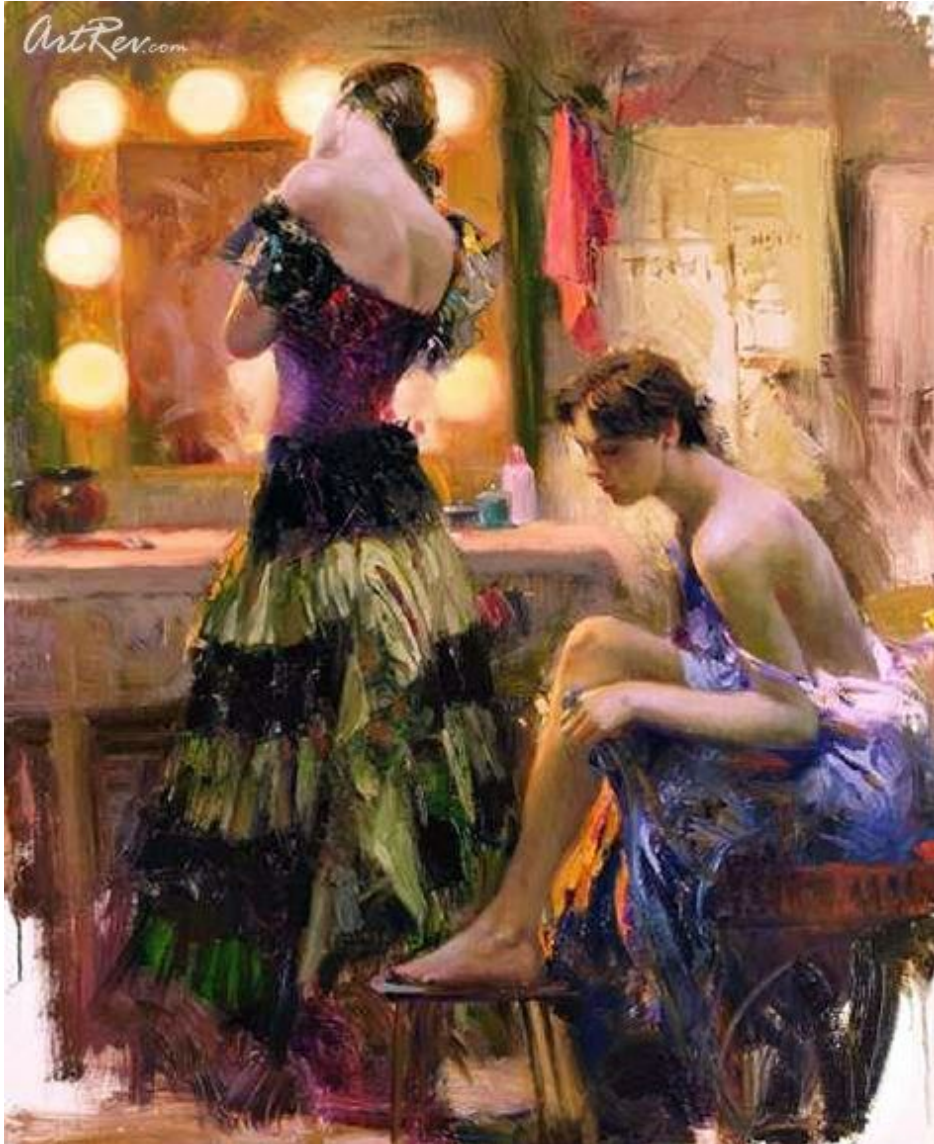


[Almost Ready](#) by [Pino](#)

Hand Embellished Giclee on Canvas - Main Subject: Figurative



**Item Number**  
1820810750

**Retail Value**  
\$800

**ArtRev.com Price**  
\$620  
You Save 22% Off [-\$180.00]

**Dimensions (As Shown)**  
16W x 20H Inches  
40.64W x 50.8H cm

**Medium**  
Hand Embellished Giclee on Canvas

**Edition**  
- Limited Edition of 95  
- Hand-Signed   
- Numbered 

## Custom Framing

- Design-it-yourself and Save!
- Museum-Quality Framing
- Up to 50% off Gallery Prices



### Frame Your Artwork Online & Save!

Did you know that you can custom frame this artwork to your exact taste and specifications. Spark your own creativity and frame your artwork in as little as 2 minutes in three easy steps! Our Online frame shop offers museum quality framing services at prices up to 50% off your local gallery or frame shop. [See art collection](#) .

## About Pino

Pino is noted for his exceptional ability to capture the movements and expressions of his subjects - a talent which has brought his artwork a worldwide following and private commissions to do portraits. Pino has been invited to make several appearances on major TV networks and has been interviewed in national and international journals.

Pino Daeni, born Giuseppe Dangelico, in Italy, on November 8th 1939, trained at the Art institute of Bari, and later at Milan s Academy of Brera. Pino perfected his skills painting nudes and figure studies heavily influenced by the Pre-Raphaelites and Macchiaioli.

After establishing himself as a successful artist in his native land, Pino decided to immigrate to the United States, where he felt he would have more artistic freedom and opportunity. He was soon discovered by the distinguished Borghi Gallery, which gave several prestigious exhibitions for him in New York & Boston.

His early paintings featured soft romantic characters mostly women dressed in flowing skirts and dresses; and these caught the attention of both DELL & Zebra Book Publishers. In 1980 Zebra commissioned him to do his first book cover; his popularity grew within the literary community and he became the artist-in-demand for Zebra, Bantam, Simon, and Schuster, Harlequin, Penquin USA and Dell. To date, Pino has illustrated 3,000 books; his style has dominated the market.

During most of the next two decades, his Romance Period, Pino s oeuvre was marked by hundreds of book covers painted for artists such as Danielle Steele, Sylvie Summerfield, & Amanda Ashley. Using a then unknown Italian model named Fabio, Pino struck a chord that is still resounding today. Pino s technique, his warm & exciting colors and the subtle, but simple approach to his subject, are his trademark, his talent, and the reasons why his paintings and limited editions are in growing demand throughout the USA and United Kingdom, and appreciated by collectors throughout the world. Always underlining his success as a commercial artist was his desire to express his own thoughts & emotions. Years later, we see these images brought to life in Pino s original oils on canvas, gicleés and serigraphs.

Pino s canvases elicit feelings of warmth, nostalgia, love & family. His paintings are often set on vibrantly sunny beaches, typically in the Mediterranean where he grew up. His alter ego, a young boy surrounded by beautiful women, (his sisters, aunts & cousins), are found in various states of emotion ranging from adoration to isolation. Many of Pino s characters are also found frequently inhabiting sensuous boudoirs or dressing rooms, in anticipation of their husband or lovers.

Pino resides in New Jersey with his wife, a son and a daughter.

## **Hand Embellished Giclee on Canvas**

Giclee [zhee-clay] is a French term meaning a 'squirt or spray of ink'. This process utilizes sophisticated printing techniques whereby an industrial 8-Color to 12-Color inkjet printer sprays a staggering four million droplets of ink per second onto archival fine art paper or canvas. Requiring highly sophisticated printers and special pigment inks for an extremely wide color gamut, this blend of fine art and state-of-the-art technology produces exceptional fine art prints. Giclee prints are usually coated with a high quality gloss or varnish to minimize abrasion and increase resistance to image fading. Additionally, protective coatings protect expensive prints against moisture.

Giclee prints render deep, saturated colors and retain minute detail, subtle tints and blends. The quality of the giclee print rivals traditional silver-halide and gelatin printing processes and is commonly found in museums, art galleries, and photographic galleries.

The giclee printing process provides better color accuracy than other means of reproduction. The prints may be hand embellished by the artist using paint, ink and gold foil stamping for a mixed media effect. Giclee prints are sometimes mistakenly referred to as Iris prints, which are 4-Color ink-jet prints from a printer pioneered in the late 1970s by Iris Graphics.

Numerous examples of giclee prints can be found in New York City at the Metropolitan Museum, the Museum of Modern Art, and the Chelsea Galleries. Recent auctions of giclee prints have fetched as much as \$20,000.

---

**Copyright Notice:** This document was generated on [ArtRev.com](http://ArtRev.com) on 11/23/2017 6:26:16 AM (U.S. Eastern Time Zone) - Copyright 2017 ArtRev.com, Inc. All Rights Reserved. The entire contents of this brochure is the property of ArtRev.com. You may not modify, copy, reproduce, republish, or distribute any portion of this brochure without the prior express written consent of ArtRev.com, Inc.

**Authenticity & Price Match Guarantee:** Shop with confidence. ArtRev.com is proud to be the first online art retailer to offer a "[lifetime authenticity guarantee](#)" with every limited edition or original work of art. Most limited edition and original artworks ship with a Certificate of Authenticity free of charge. This certificate is an official and valuable document that most insurance companies require in order to insure artworks against damage or theft. ArtRev.com will make every possible attempt to match or beat the advertised price of any major Internet competitor, art gallery, or frame shop; given that they are authorized to sell the item from the publisher or artist, and have the exact item in stock available for immediate sale.

**Pricing & Availability:** Due to the dynamic nature of the ArtRev.com website, prices and availability are subject to change without notice. ArtRev.com is not responsible for any pricing errors.