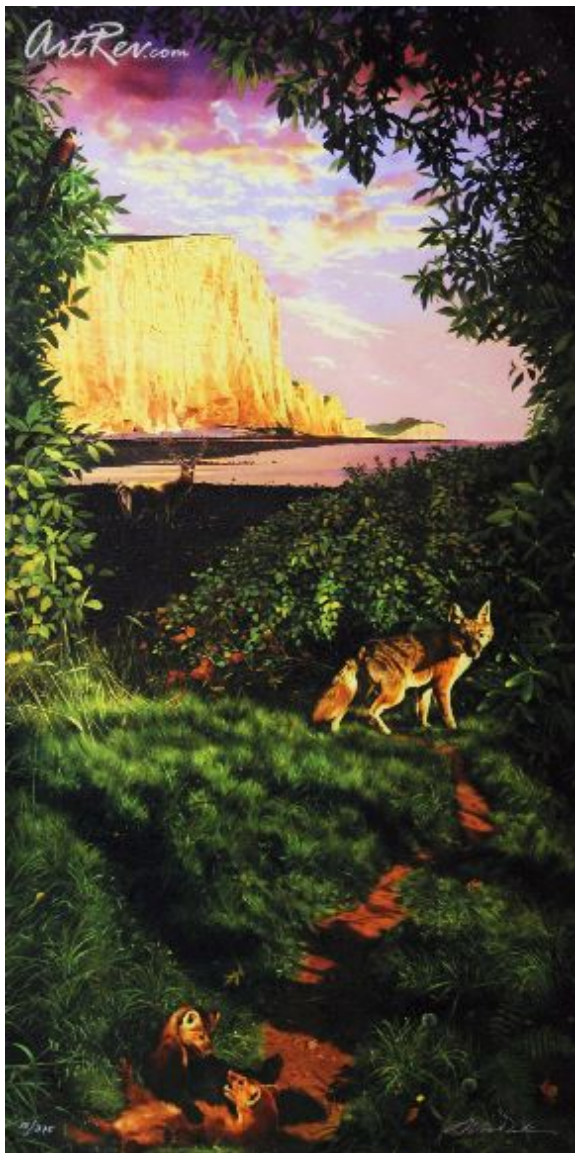


[Wildlife Paradise](#) by [Charles Wildbank](#) (On Sale!)

Giclee on Paper - Main Subject: Nature



**Item Number**

1333495887

**Retail Value**

\$300

**ArtRev.com Price**

\$185

You Save 38% Off [-\$115.00]

**Dimensions (As Shown)**

18W x 35H Inches

45.72W x 88.9H cm

**Medium**

Giclee on Paper

**Edition**

- Limited Edition of 375
- Hand-Signed 
- Numbered 

**Custom Framing**

- Design-it-yourself and Save!
- Museum-Quality Framing
- Up to 50% off Gallery Prices



**Frame Your Artwork Online & Save!**

Did you know that you can custom frame this artwork to your exact taste and specifications. Spark your own creativity and frame your artwork in as little as 2 minutes in three easy steps! Our Online frame shop offers museum quality framing services at prices up to 50% off your local gallery or frame shop. [See art collection](#) .

**About Charles Wildbank**

Charles Bourke Wildbank, native New York artist delved into photorealism while at Pratt Institute, created a sensation on Fifth Avenue with a giant sparkling rendering of the famed Cartier diamond, and has painted portraits of David Hockney and the late

Luciano Pavarotti. He is well known for his versatility of a wide range of figurative themes including florals, still life, portraits and seascapes.

His latest achievements include two 18-foot-high murals commissioned by the Cunard Line for the new luxury ocean liner, the Queen Mary 2. Wildbank is listed with some of his works in Deaf Artists in America: Colonial to Contemporary book by Deborah Sonnenstrahl . He has conducted workshops at Poppi in Italy during fall of 2002 and Giverny in France during spring of 2006.

Up to present day, observable form and vivid color have long been attributed to Wildbank's art. His recent works appear to flirt with the abstract and the surreal christened as his HADO series.

### **Giclee on Paper**

Giclee [zhee-clay] is a French term meaning a 'squirt or spray of ink'. This process utilizes sophisticated printing techniques whereby an industrial 8-Color to 12-Color inkjet printer sprays a staggering four million droplets of ink per second onto archival fine art paper or canvas. Requiring highly sophisticated printers and special pigment inks for an extremely wide color gamut, this blend of fine art and state-of-the-art technology produces exceptional fine art prints. Giclee prints are usually coated with a high quality gloss or varnish to minimize abrasion and increase resistance to image fading. Additionally, protective coatings protect expensive prints against moisture.

Giclee prints render deep, saturated colors and retain minute detail, subtle tints and blends. The quality of the giclee print rivals traditional silver-halide and gelatin printing processes and is commonly found in museums, art galleries, and photographic galleries.

The giclee printing process provides better color accuracy than other means of reproduction. The prints may be hand embellished by the artist using paint, ink and gold foil stamping for a mixed media effect. Giclee prints are sometimes mistakenly referred to as Iris prints, which are 4-Color ink-jet prints from a printer pioneered in the late 1970s by Iris Graphics.

Numerous examples of giclee prints can be found in New York City at the Metropolitan Museum, the Museum of Modern Art, and the Chelsea Galleries. Recent auctions of giclee prints have fetched as much as \$20,000.

---

**Copyright Notice:** This document was generated on [ArtRev.com](http://ArtRev.com) on 8/17/2017 5:31:10 PM (U.S. Eastern Time Zone) - Copyright 2017 ArtRev.com, Inc. All Rights Reserved. The entire contents of this brochure is the property of ArtRev.com. You may not modify, copy, reproduce, republish, or distribute any portion of this brochure without the prior express written consent of ArtRev.com, Inc.

**Authenticity & Price Match Guarantee:** Shop with confidence. ArtRev.com is proud to be the first online art retailer to offer a "[lifetime authenticity guarantee](#)" with every limited edition or original work of art. Most limited edition and original artworks ship with a Certificate of Authenticity free of charge. This certificate is an official and valuable document that most insurance companies require in order to insure artworks against damage or theft. ArtRev.com will make every possible attempt to match or beat the advertised price of any major Internet competitor, art gallery, or frame shop; given that they are authorized to sell the item from the publisher or artist, and have the exact item in stock available for immediate sale.

**Pricing & Availability:** Due to the dynamic nature of the ArtRev.com website, prices and availability are subject to change without notice. ArtRev.com is not responsible for any pricing errors.