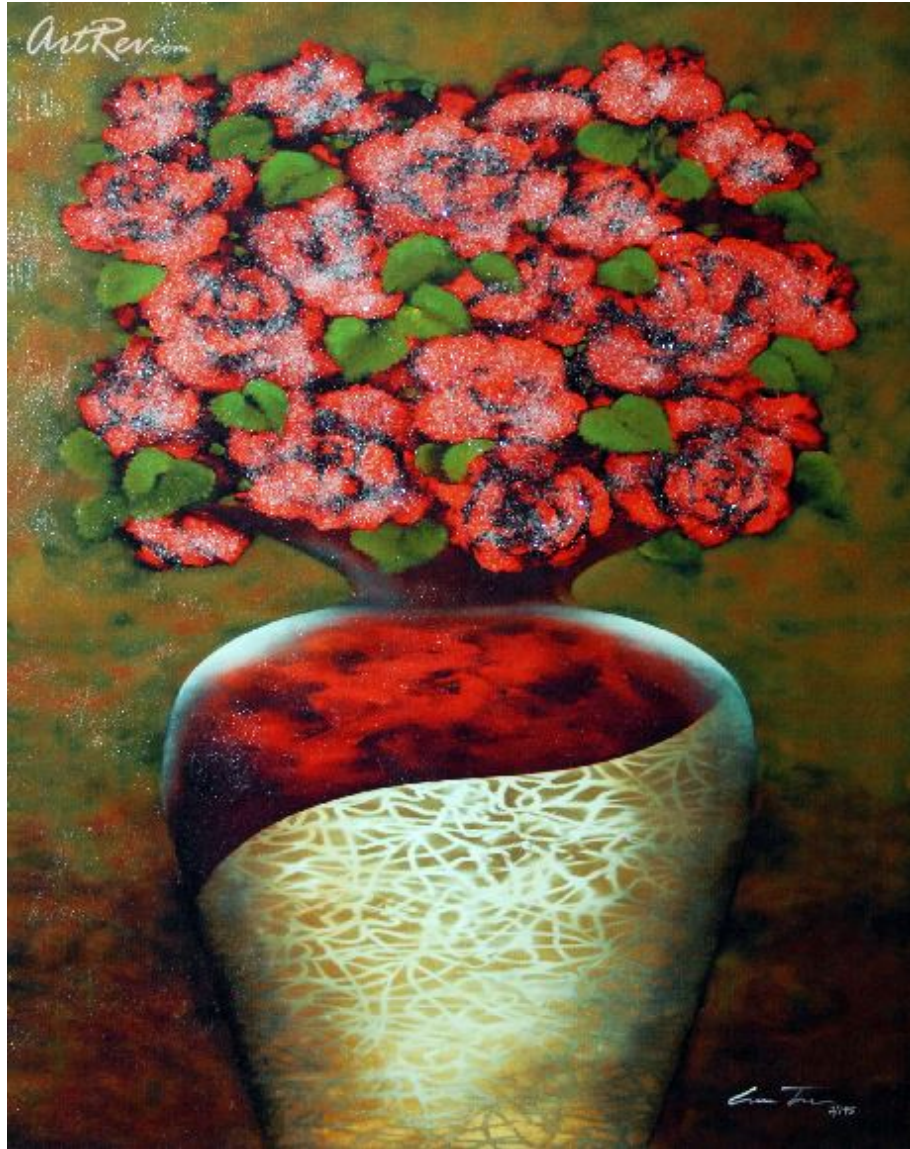


[Estate Bouquet](#) by [Lun Tse](#) (On Sale!)

Giclee on Canvas - Main Subject: Still Life





Item Number
1074893300

Retail Value
\$1,300

ArtRev.com Price
\$900
You Save 31% Off [-\$400.00]

Dimensions (As Shown)
24W x 30H x 0.75D Inches
60.96W x 76.2H x 1.9D cm

Medium
Giclee on Canvas

Edition
- Limited Edition of 195
- Hand-Signed 
- Numbered 

Custom Framing

- Design-it-yourself and Save!
- Museum-Quality Framing
- Up to 50% off Gallery Prices



Frame Your Artwork Online & Save!

Did you know that you can custom frame this artwork to your exact taste and specifications. Spark your own creativity and frame your artwork in as little as 2 minutes in three easy steps! Our Online frame shop offers museum quality framing services at prices up to 50% off your local gallery or frame shop. [See art collection](#) .

About Lun Tse

Born in Hong Kong, China, on February 19, 1964, Lun Tse was one of ten siblings, including a twin brother. Lun's name, which directly translates to the demonstrative dragon in English, destined the aspiring artist for greatness from the very beginning.

Lun's work -- which melds bold, rich color, thoughtful brushstrokes and delicate imagery -- brings to mind this traditional Chinese symbol, a creature both elegant and powerful in nature.

In 1967, when Lun was only three years old, his family relocated to San Francisco, specifically the bustling borough of Chinatown. Eventually the Tses transferred to Salinas, California, a decision that prompted Lun to explore his talents early on. In Salinas, Lun's twin began writing, which sparked Lun's own innate desire to create. He began drawing intricate illustrations to accompany his brother's unique stories.

In high school, Lun focused primarily on his art classes and as a result, was awarded with a scholarship post-graduation. Immediately following, Lun relocated to Tampa, where he began experimenting with a variety of mediums and subjects. With the help of instructional art books, Lun polished his craft and used this expanding knowledge to pursue freelance projects on the side. He considered each venture an opportunity to expand his prowess as both an artist and a professional in his field. Perseverant to the core, Lun won numerous festival awards during this period, and even had his work featured at a number of posh Boca Raton galleries. It wasn't long before Lun was hired as an Art Director for a Tampa art company. The experience gave him a greater appreciation for the painstaking process behind fine art construction, and the delicate details that make these individualized pieces special.

Throughout Lun's years as an artist he discovered the unique technique of sponge painting. This technique provided a different and unique dimension of painting he could not achieve with a traditional brush. He is a master of sponge painting and has published several instructional books on this subject.

Other books he has written includes: *Painting Murals Fast & Easy*, of which he is co-author, the *Painter's Quick Reference* guides for trees and foliage, and landscapes, and *Sponge Painting*.

Lun's work has been displayed at many nationally and internationally acclaimed trade fairs, and fine galleries worldwide. His pieces -- often large-scale landscapes or floral motifs -- possess a dreamlike quality that is mesmerizing, but precise. Lun's breathtaking style is marked by hazily blended vibrant colors and wispy brushstrokes. Each piece he creates has its own special story that often recalls Lun's diverse upbringing, which spanned two very different continents and cultures.

I find great satisfaction in creating artworks that are done well, Lun says. To have them well-received by any audience brings a total sense of accomplishment. When a collector takes my artwork for their own to enrich their homes -- this gives me a sense of contribution. Lun currently uses his dexterous hand to create a magnificent collection of the finest art in Atlanta where he lives with his family.

Giclee on Canvas

Giclee [zhee-clay] is a French term meaning a 'squirt or spray of ink'. This process utilizes sophisticated printing techniques whereby an industrial 8-Color to 12-Color inkjet printer sprays a staggering four million droplets of ink per second onto archival fine art paper or canvas. Requiring highly sophisticated printers and special pigment inks for an extremely wide color gamut, this blend of fine art and state-of-the-art technology produces exceptional fine art prints. Giclee prints are usually coated with a high quality gloss or varnish to minimize abrasion and increase resistance to image fading. Additionally, protective coatings protect expensive prints against moisture.

Giclee prints render deep, saturated colors and retain minute detail, subtle tints and blends. The quality of the giclee print rivals traditional silver-halide and gelatin printing processes and is commonly found in museums, art galleries, and photographic galleries.

The giclee printing process provides better color accuracy than other means of reproduction. The prints may be hand embellished by the artist using paint, ink and gold foil stamping for a mixed media effect. Giclee prints are sometimes mistakenly referred to as Iris prints, which are 4-Color ink-jet prints from a printer pioneered in the late 1970s by Iris Graphics.

Numerous examples of giclee prints can be found in New York City at the Metropolitan Museum, the Museum of Modern Art, and the Chelsea Galleries. Recent auctions of giclee prints have fetched as much as \$20,000.

Copyright Notice: This document was generated on ArtRev.com on 2/23/2018 9:37:36 PM (U.S. Eastern Time Zone) - Copyright 2018 ArtRev.com, Inc. All Rights Reserved. The entire contents of this brochure is the property of ArtRev.com. You may not modify, copy, reproduce, republish, or distribute any portion of this brochure without the prior express written consent of ArtRev.com, Inc.

Authenticity & Price Match Guarantee: Shop with confidence. ArtRev.com is proud to be the first online art retailer to offer a "[lifetime authenticity guarantee](#)" with every limited edition or original work of art. Most limited edition and original artworks ship with a Certificate of Authenticity free of charge. This certificate is an official and valuable document that most insurance companies require in order to insure artworks against damage or theft. ArtRev.com will make every possible attempt to match or beat the advertised price of any major Internet competitor, art gallery, or frame shop; given that they are authorized to sell the item from the publisher or artist, and have the exact item in stock available for immediate sale.

Pricing & Availability: Due to the dynamic nature of the ArtRev.com website, prices and availability are subject to change without notice. ArtRev.com is not responsible for any pricing errors.